



Fleet Road | Fleet Estate, Dartford, DA2 6JE



Guide Price £375,000 to £400,000

Freehold

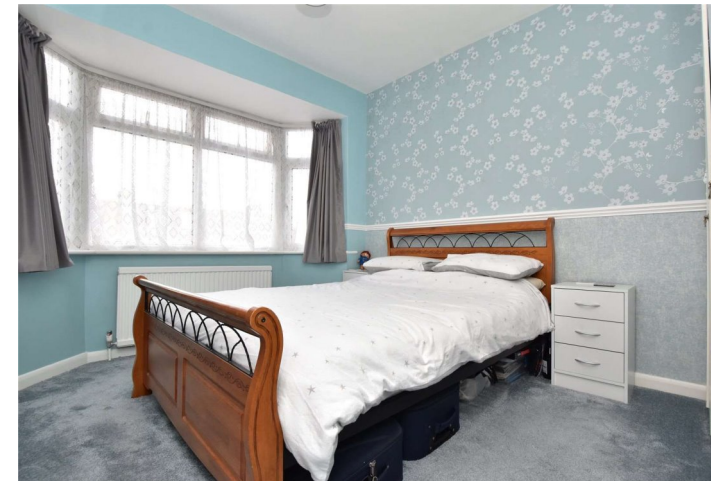
**ROBINSON-JACKSON**  
Our service will *move* you

## Fleet Road, Fleet Estate

Robinson & Jackson are pleased to offer this three/Four bedroom semi detached extended home the property is located in the ever popular Fleet Estate and is ideal for the growing family.

### Property Features

- Council Tax:
- EPC Rating: D
- Popular Location
- Close to Sought After Schools
- Great Access to A2/M25
- Semi Detached Family Home
- Loft Conversion Bedroom
- Extended On The Ground Floor



## Interior

**Entrance Hall** Door to front. Understairs storage cupboard. Radiator. Laminate flooring.

**Lounge** 3.8m x 3.2m (12'6" x 10'6") Double glazed bay window to front. Radiator. Carpet

**Dining Room** 4.32m x 2.87m (14'2" x 9'5") Double glazed doors to rear. Radiator. Laminate flooring.

**Kitchen** 5.03m x 1.98m (16'6" x 6'6") Double glazed window to rear. Range of wall and base units with complementary worksurfaces over incorporating sink drainer. Plumbed for washing machine and dishwasher. Space for cooker and fridge freezer. Cupboard housing boiler. Laminate flooring.

**Garden Room** 2.36m x 1.83m (7'9" x 6') Double glazed doors to rear. Radiator. Laminate flooring.

**Ground Floor Shower Room** Double glazed window to rear. Low level Wc. Vanity wash hand basin. Shower cubicle. Radiator. Part tiled walls. Vinyl flooring.

**Landing** Stairs to loft room. Double glazed window to side. Carpet.

**Bedroom One** 3.9m x 2.9m (12'10" x 9'6") Double glazed bay window to front. Radiator. Carpet.

**Bedroom Two** 3.38m x 2.9m (11'1" x 9'6") Double glazed window to rear. Radiator. Carpet.

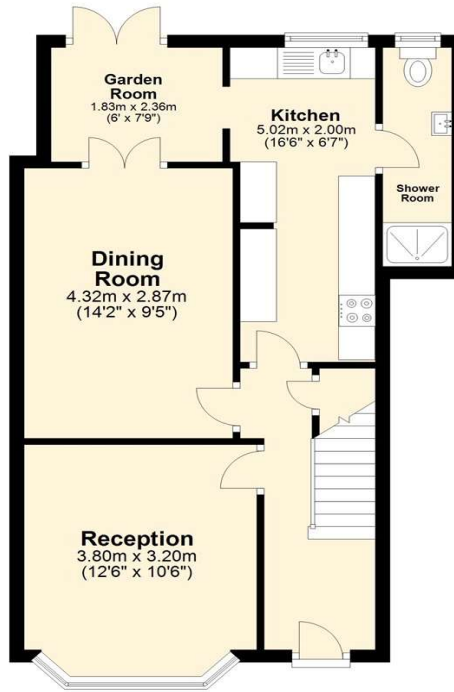
**Bedroom Four** 2.08m x 1.83m (6'10" x 6') Double glazed window to front. Radiator. Carpet.

**Bathroom** Double glazed window to rear. Low level Wc. Pedestal wash hand basin. Panelled bath with shower over. Radiator. Part tiled walls. Laminate flooring.

**Bedroom Three** Double glazed skylight windows to rear and front. Radiator. Carpet.

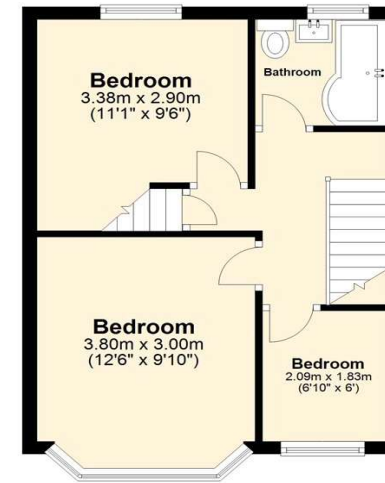
### Ground Floor

Approx. 49.9 sq. metres (536.7 sq. feet)



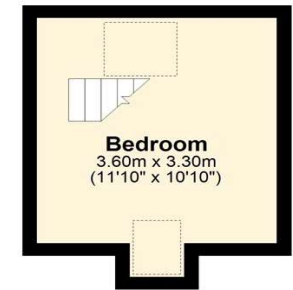
### First Floor

Approx. 33.0 sq. metres (355.1 sq. feet)



### Second Floor

Approx. 12.3 sq. metres (132.1 sq. feet)



Total area: approx. 95.1 sq. metres (1023.8 sq. feet)





## Additional Information

The boiler is located in the hallway cupboard.

The property measures: 95 Sqm

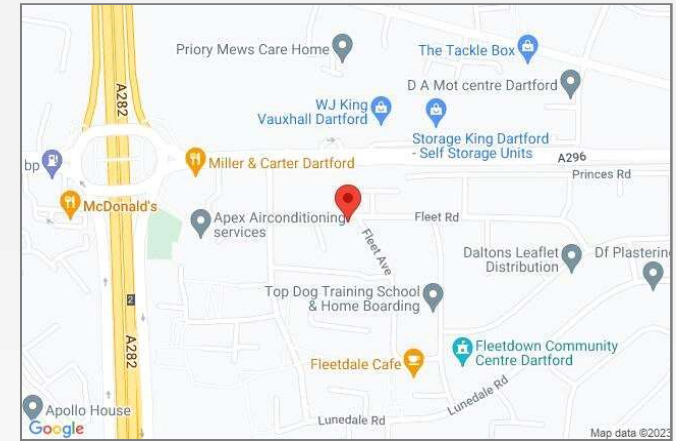
## Exterior

Front Garden: Hard standing providing off street parking for two cars

Rear Garden: Patio. Lawn. Brick built shed. Rear gated access.

## Property Location

Fleet Road, Fleet Estate, Dartford, DA2 6JE



**FOR MORE INFORMATION  
CONTACT US TODAY.**

01322 281281  
Robinson Jackson  
22 Market Street,  
Dartford,  
Kent DA1 1EZ  
dartford@robinson-jackson.com

