



Low Close | Greenhithe, Kent, DA9 9PF



Offers in excess of £225,000
Leasehold

ROBINSON-JACKSON
Our service will *move* you

Low Close, Greenhithe

Robinson Jackson are delighted to present this CHAIN FREE two bedroom first floor flat situated on the sought after 'Worcester Park' development in Greenhithe. Located within walking distance of Greenhithe station and under 5 minute drive to Bluewater shopping centre, Cutty Sark Court is tucked away on Low Close and the pleasant surroundings need to be viewed to be fully appreciated. The property comes with allocated parking. Call our Robinson Jackson team to arrange your viewing and find out more.

Property Features

- CHAIN FREE
- Offers over £225,000
- Greenhithe Station (0.5miles)
- Easy access to A2/M25
- Ideal for first time buyers
- One allocated parking space
- Close proximity to Darent Valley Hospital



Interior

Entrance Hall: Double glazed window to side. Telephone entry. Storage cupboard. Carpet.

Lounge/Dining: 5.13m x 4.60m (16'10" x 15'1") Two double glazed windows to front. Double glazed window to rear. Wall mounted electric heater. Carpet.

Kitchen: 3.20m x 2.04m (10'6" x 6'8") Double glazed window to rear. Range of matching wall and base units with complimentary work surface over. Space for cooker. Stainless steel sink with drainer. Space for washing machine. Space for fridge freezer. Part tiled walls. Tiled flooring.

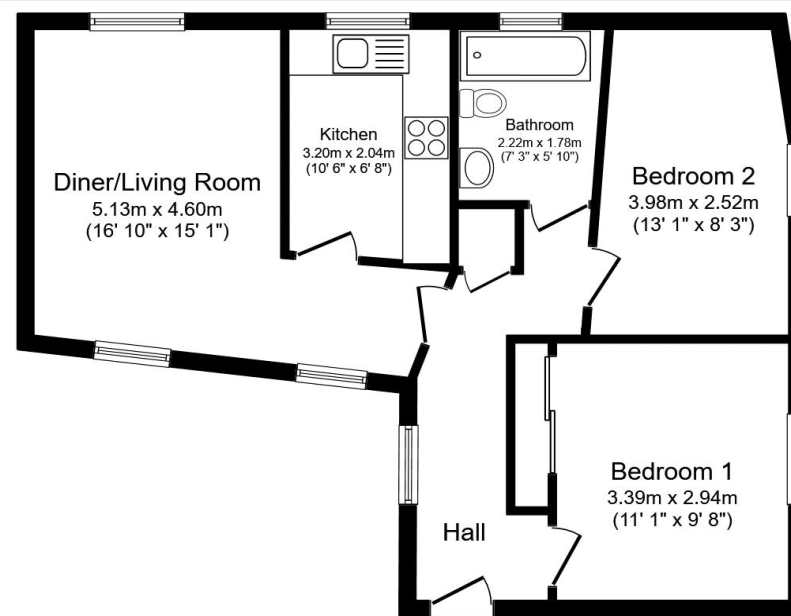
Bedroom One: 3.38m x 2.95m (11'1" x 9'8") Double glazed window to side. Built in wardrobes. Wall mounted electric heater. Carpet.

Bedroom Two: 4m x 2.51m (13'1" x 8'3") Double glazed window to side. Wall mounted electric heater. Carpet.

Bathroom: 2.2m x 1.78m (7'3" x 5'10") Double glazed frosted window to rear. Low level WC. Pedestal wash hand basin. Panelled bath with shower attachment and shower screen. Tiled walls. Laminate flooring.

Exterior

The property comes with one allocated parking space.



Floor Plan

Total floor area 56.0 sq. m. (603 sq. ft.) approx

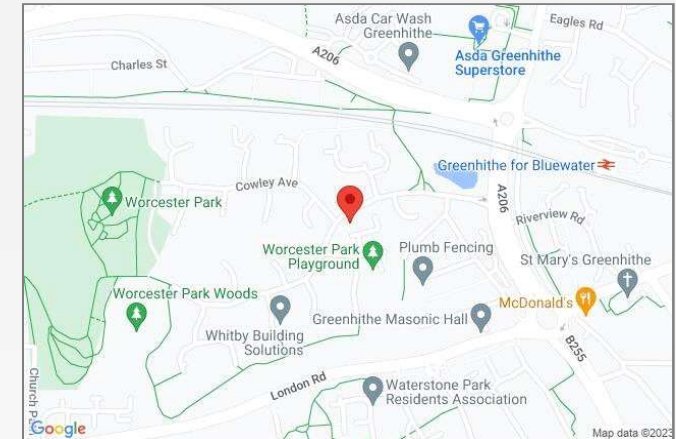
This floor plan is for illustrative purposes only. It is not drawn to scale. Any measurements, floor areas (including any total floor area), openings and orientation are approximate. No details are guaranteed, they cannot be relied upon for any purpose and they do not form part of any agreement. No liability is taken for any error, omission or misstatement. A party must rely upon its own inspection(s). Plan produced for Your Move. Powered by www.focalagent.com





Property Location

Low Close, Greenhithe, Kent, DA9 9PF



Additional Information

Dartford Borough Council - Tax Band C

Total floor area: 59 sq. metres

Leasehold Information

Remaining term on lease: 90 years

Current service charge: £1200 per annum (approx.)

Current ground rent: £0 per annum

(All information regarding lease term and service charges have been provided by the seller and should be verified by your solicitor).

**FOR MORE INFORMATION
CONTACT US TODAY.**

01322 624440

Robinson Jackson
39 High Street,
Swanscombe
Kent,
DA10 0AG

swanscombe@robinson-jackson.com

