





Spurrell Avenue | Bexley, Kent, DA5 2HA

 3-4  1  1-2 Offers Over £450,000 Freehold

ROBINSON-JACKSON
Our service will *move* you

Spurrell Avenue, Bexley

Located on a popular road in Joydens Wood is this nicely presented 3/4 bedroom semi-detached family home that benefits from a converted garage and side extension that provides a utility room.

Property Features

- Council Tax: D
- EPC Rating: D
- Fully Double Glazed
- Gas Central Heating
- Converted Garage
- Side Extension
- Potential to Extend STPP
- Off Road Parking



Interior

Entrance Hall Double glazed frosted door to front. Stairs to first floor.

Lounge/Diner Double glazed window to front and rear. Radiator x2. Carpet.

Kitchen Double glazed window to rear. Door to side. Wall and base units. Serving hatch to lounge diner. Space for an electric cooker. Wall mounted boiler. Space for fridge. Stainless steel sink with double drainer.

Utility Room Storage cupboards. Plumbed for washing machine and tumble dryer.

Bedroom 4 / Reception 2 Double glazed window to front. Carpet.

Landing Window to side. Storage cupboard. Access to loft.

Bedroom 1 Double glazed window to front. Radiator. Carpet.

Bedroom 2 3.05m x 3.05m (10' x 10') Double glazed window to rear. Radiator. Carpet.

Bedroom 3 2.74m x 1.83m (9' x 6') Double glazed window to front. Radiator. Carpet.

Bathroom Double glazed frosted window to rear. Tiled walls. Vinyl flooring. Shower cubicle. Low level WC. Vanity sink unit.

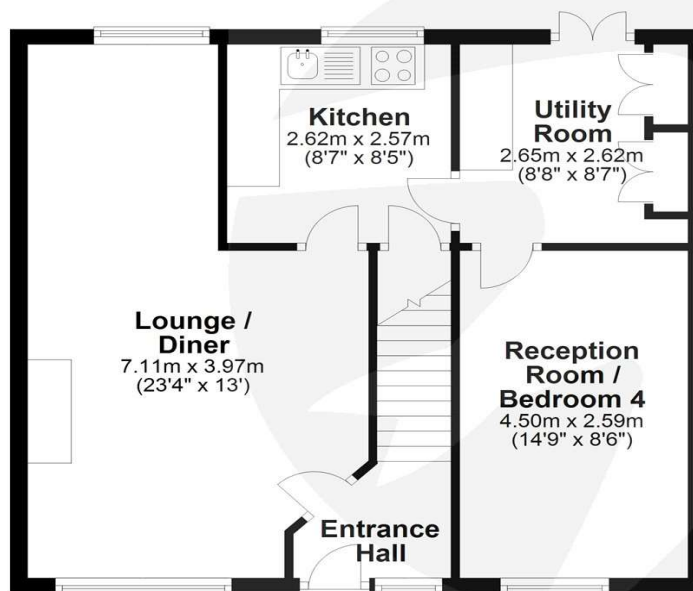
Exterior

Front Driveway to front. Lawn.

Rear Garden Mainly laid to lawn. Patio area.

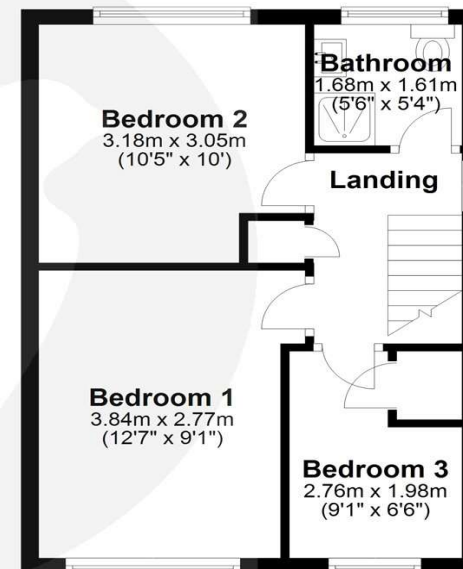
Ground Floor

Approx. 54.0 sq. metres (580.8 sq. feet)



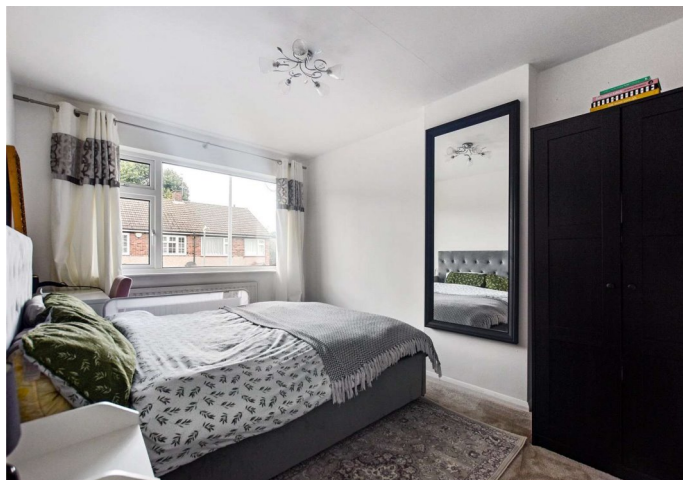
First Floor

Approx. 34.5 sq. metres (371.0 sq. feet)



Total area: approx. 88.4 sq. metres (951.8 sq. feet)

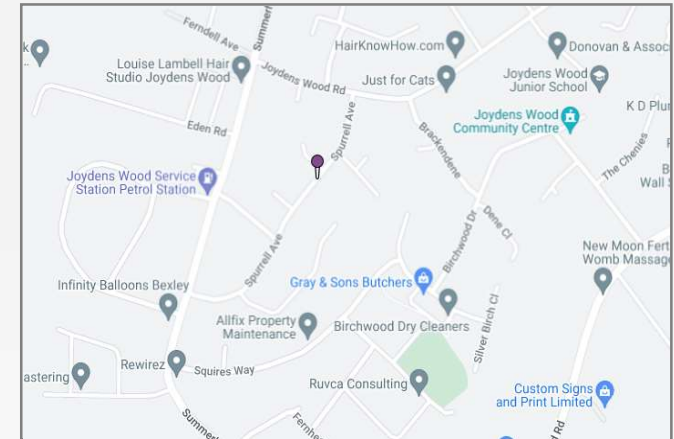
Please note that this is for illustration purposes only and should not be used as an exact representation of the property.
All measurements are approximate.
Plan produced using PlanUp.





Property Location

Spurrell Avenue, Bexley, Kent, DA5 2HA



*All distances from branch postcode. Train time from nearest station.

Additional Information

Joydens Wood is an 'urban village' located between Bexley and Wilmington, with a tranquil woodland managed by the Woodland Trust at its heart. The woodland spans an impressive 333 acres, and is home to a variety of trees, plants, wooden sculptures and remains dating back to Roman times.

Furthermore, Joydens Wood has a selection of popular primary schools and provides convenient access to both Wilmington Grammar schools. Local family-run businesses include a post office, a newsagents, a dry cleaners, a launderette and a butchers.

**FOR MORE INFORMATION
CONTACT US TODAY.**

01322 559900
Robinson Jackson
77 Bexley High Street,
Bexley,
Kent DA5 1JX
bexley@robinson-jackson.com

