



photos coming soon...



photos coming soon...



photos coming soon...

Barrow Court Catford SE6 1LD Leasehold



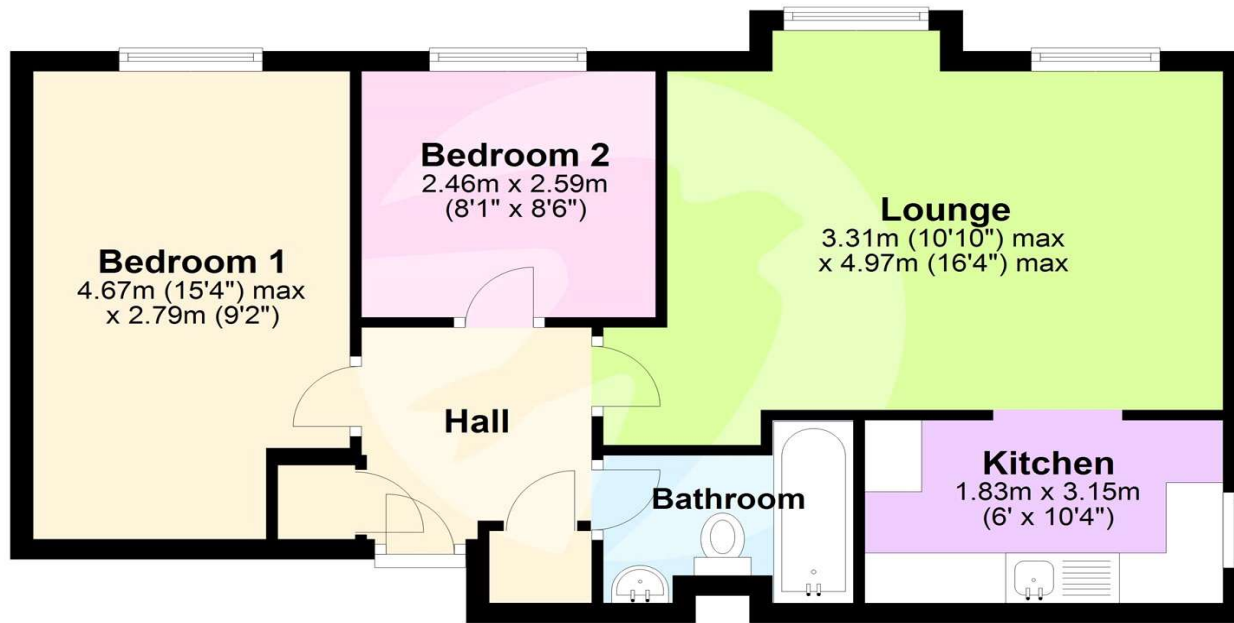
Council Tax: C
EPC Rating: D

Robinson-Jackson are pleased to bring to the market this top floor two bedroom flat situated in a popular residential development. Well located for public transport, shops and schools, ideal for a first time buyer. Benefitting from 16' lounge, 10' kitchen, parking bay and communal gardens.

- Top Floor Flat
- 16' Lounge
- Two Bedrooms
- Parking Bay
- Communal Garden
- Well located for Public Transport

Asking Price £199,950

Top Floor



This floor plan is for illustrative purposes only. It is not drawn to scale. Measurements are approximate.

Plan produced using PlanUp.



FOR MORE INFORMATION
CONTACT US TODAY.

020 8698 1234

Robinson Jackson
87 Rushey Green,
Catford
SE6 4AF

jamie.nicol@robinson-jackson.com



Interior

Hall Loft hatch, storage cupboard housing water tank, storage cupboard, electric panel heater, laminate floor.

Lounge 4.98m x 3.3m (16'4" x 10'10") Bay window to rear, window to rear, electric panel heater, laminate floor.

Kitchen 1.83m x 3.15m (6' x 10'4") Window to side, extractor fan, range of wall and base units with work surface over, sink, plumbing for washing machine, part tiled walls, tiled floor.

Bedroom 1 4.67m x 2.8m (15'4" x 9'2") Window to rear, electric panel heater, laminate floor.

Bedroom 2 2.46m x 2.6m (8'1" x 8'6") Window to rear, electric panel heater, laminate floor.

Bathroom 2.24m x 1.85m (7'4" x 6'1") Extractor fan, electric heater, wash hand basin, panel enclosed bath, low level w.c., part tiled walls, tiled floor.

Exterior

Communal Garden Laid to lawn, shrub borders.

Leasehold Information

Time remaining on lease: Approx. 70 years and 11 months

Ground Rent: £85 per annum*

Service Charge: TBC per annum*

*(to be verified by vendor's solicitor)

Location

Catford is growing in popularity among commuters as journeys from its two mainline stations can take as little as 10 minutes to Central London.

The Broadway Theatre is an impressive Art Deco building, with a regular programme of shows and events. Catford's other premium attraction is Mountsfield Park – one of London's best open spaces and home of the annual People's Day. Catford's Black Cat sculpture remains a well-loved landmark.

Additional Information

Local Authority: London Borough of Lewisham

Council Tax: Band C (£1,712 pa)