



Buffkyn Way | Maidstone, Kent, ME15 8FY



3



2



1

Guide Price £350,000 - £375,000

Freehold

ROBINSON MICHAEL & JACKSON 

Our service will **move** you

Buffkyn Way, Maidstone

Introducing this charming three-bedroom property nestled in the heart of Maidstone, Kent. This home offers a perfect blend of comfort and convenience.

Property Features

- Council Tax: D
- EPC Rating: B
- Three double bedrooms
- Garage and parking
- Good size rear garden
- Kitchen/Diner
- No chain
- Popular location



Interior

Entrance Hall Stairs leading up

Living Room 4.7m x 3.05m (15'5" x 10') Window to the front, patio doors leading out to the garden

Kitchen/Diner 4.67m x 3.2m (15'4" x 10'6") Window to the front, integrated appliances, open planned with the dining room, patio doors leading out to the garden

Downstairs WC 2.34m x 1.14m (7'8" x 3'9") Window, heated towel rail, basin & WC

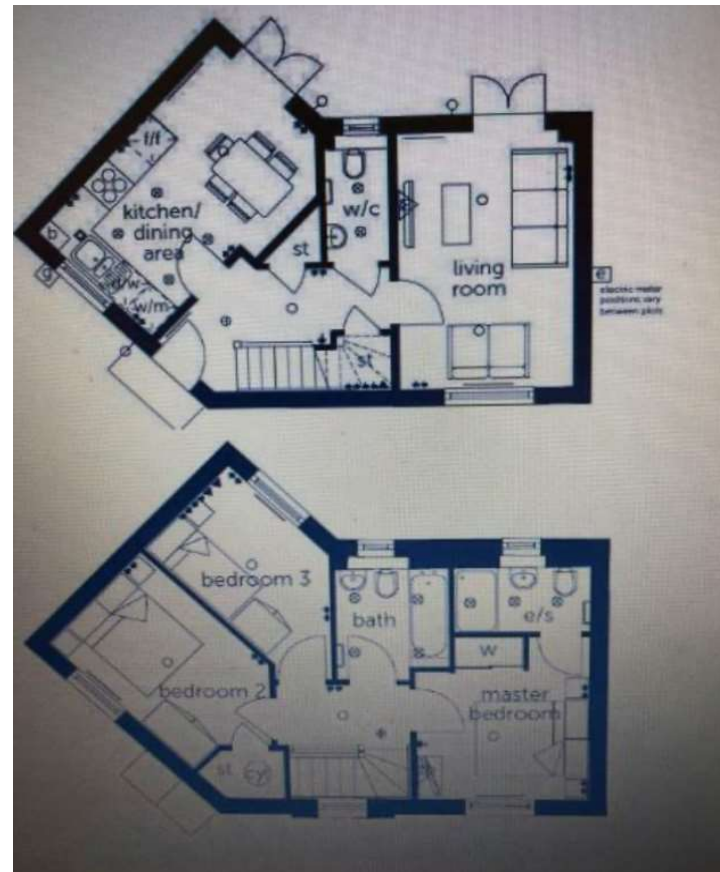
Bedroom 1 3.2m x 3.12m (10'6" x 10'3") Window to the rear, built in wardrobe space, benefits from en-suite, double bedroom

En-suite 2.3m x 1.02m (7'7" x 3'4") Walk in shower, basin, heated towel rail & WC

Bedroom 2 3.63m x 2.46m (11'11" x 8'1") Window to the front, double bedroom

Bedroom 3 3.86m x 2.16m (12'8" x 7'1") Window to the rear, double bedroom

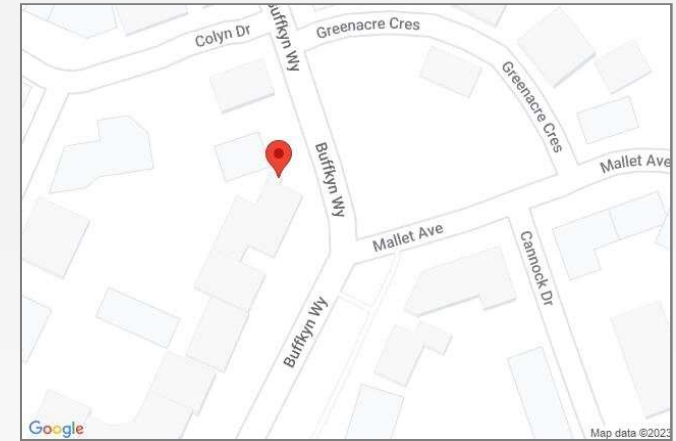
Bathroom 2.54m x 2m (8'4" x 6'7") Shower over bath, heated towel rail, basin & WC





Property Location

Buffkyn Way, Maidstone, Kent, ME15 8FY



READY TO MOVE?
Scan to instruct us

**FOR MORE INFORMATION
CONTACT US TODAY.**

01622 476666
Robinson Michael & Jackson
15A King Street
Maidstone,
Kent ME14 1BA
maidstone@robinson-jackson.com



These particulars do not form part of an offer or contract and must not be relied upon as statements or representation of fact. Any areas, measurements, journey times or distances are approximate. The text, images, photographs and plans are for guidance only and are not necessarily comprehensive. It should not be assumed that the property has all necessary planning, building regulation or other consents and we have not tested any services, equipment or facilities. References to tenure are based on information supplied by the seller. Buyer should verify all information themselves by inspection or otherwise prior to a legal commitment to purchase. Photos and images are subject to copyright.