



Hattersfield Close | Belvedere, DA17 5QT

 2  1  1 Asking Price £250,000 Leasehold

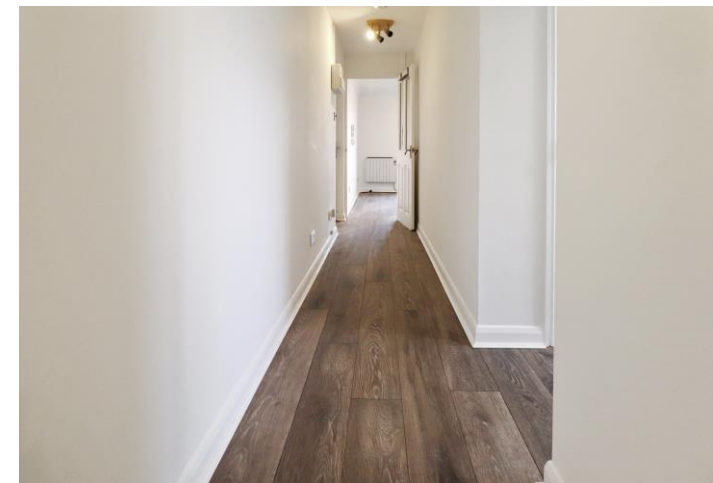
ROBINSON-JACKSON
Our service will *move* you

Hattersfield Close, Belvedere

Located only a short distance from both Belvedere and Abbey Wood stations is this tastefully decorated two bedroom first floor flat benefiting from allocated parking. Viewing is highly recommended.

Property Features

- No onward chain
- Close to station
- Good decorative order
- Residents parking
- First floor
- Must view!



Interior

Entrance Hall Entrance door, entry phone, two storage cupboard, laminate flooring

Open plan lounge/kitchen 6.12m x 4.11m (20'1" x 13'6") Double glazed window to rear, electric radiator, laminate flooring, wall and base units, stainless steel sink and drainer unit with mixer tap, space for cooker, space for washing machine, laminate flooring, part tiled walls

Bedroom 1 3.89m x 3.45m (12'9" x 11'4") Double glazed window to front, electric radiator, built in wardrobe, laminate flooring

Bedroom 2 3.07m x 2.5m (10'1" x 8'2") Double glazed window to front, electric radiator, laminate flooring

Bathroom Double glazed window to rear, pedestal wash hand basin, panelled bath with shower above, low level wc, heated towel rail, part tiled walls, tiled floor

Exterior

Parking Allocated parking space



Leasehold Information

Time remaining on lease: Approx. 94 years

Ground Rent: Not Available included in service charge

Service Charge: £1,524 Per Annum including ground rent

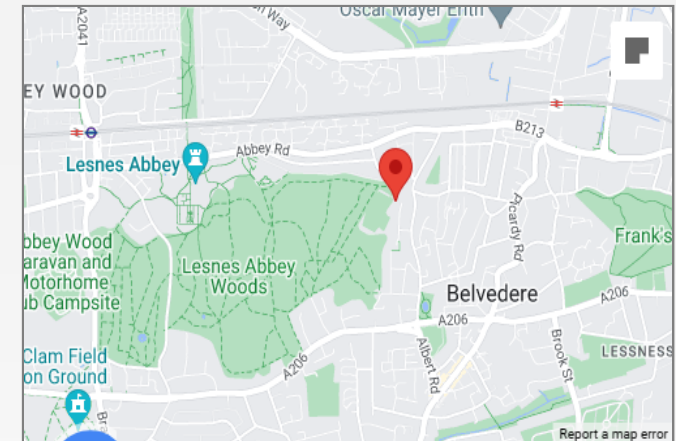
Ground Rent Review Date:





Property Location

Hattersfield Close, Belvedere, DA17 5QT



Additional Information

At the heart of Belvedere is Nuxley Village – where you'll find shops, pubs, restaurants and the Robinson Jackson branch. Explore a little further and you'll find Lesnes Abbey, with its historic monastic ruins and formal gardens, and Bostall Woods with its protected bluebell fields and ancient trees.

Belvedere residents will be a manageable walk or one stop on the train line away from Abbey Wood's Crossrail station.

- Council Tax: C
- EPC Rating: To be confirmed

FOR MORE INFORMATION
CONTACT US TODAY.

01322 441010

Robinson Jackson
61 Nuxley Road,
Belvedere,
Kent DA17 5JN

belvedere@robinson-jackson.com

