



West Grove | London, SE10 8QT



Asking Price: £425,000

Share of Freehold

ROBINSON-JACKSON
Our service will *move* you

West Grove, London

Stunning one bedroom, third floor flat located in Greenwich. The accommodation offers bright reception/diner, kitchen, bathroom with shower over bath, one double bedroom and communal garden. Well located for all local amenities, bars/restaurants, and Greenwich Park, and excellent transportation links into the City.



Interior

Living Room 4.11m x 3.86m (13'6" x 12'8") Fitted fireplace, opening into kitchen, laminate flooring.

Kitchen 2.87m x 5.61m (9'5" x 18'5") Double glazed window to front, range of wall and base units with work surface over, sink with mixer tap, gas hob with extractor fan over, tiled walls, tiled floor.

Bedroom 4.22m x 3.8m (13'10" x 12'6") Two double glazed windows to rear, radiator, fitted wardrobes, laminate flooring.

Bathroom 2.95m x 2.1m (9'8" x 6'11") Wash hand basin, low level w.c., bath with shower attachment, part tiled walls, tiled floor.

Property Features

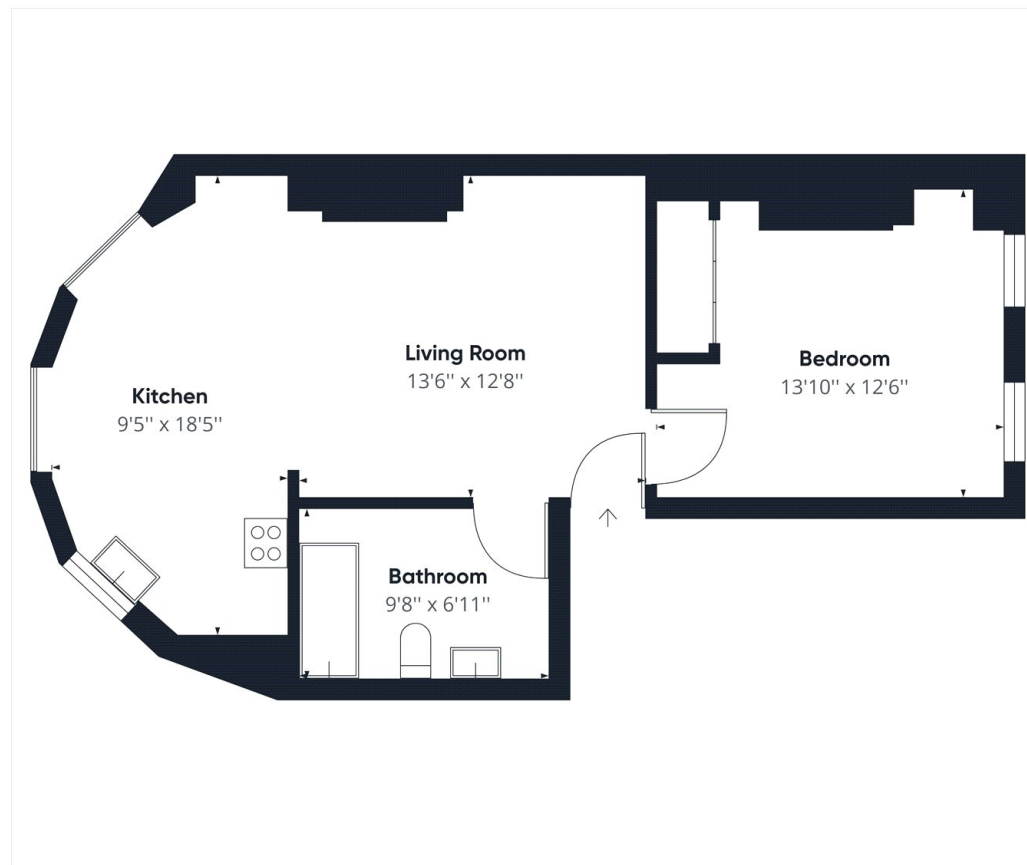
- One Double Bedroom
- Open-Plan
- Third Floor Flat
- Communal Garden
- Share of Freehold
- Walking distance to Greenwich Park
- Good location for transport links
- Total floor area: 50m²= 538ft² (guidance only)

Share of Freehold Information

Time remaining on lease: Approx. 999 years*

Service Charge: £600 Per Annum*

*(To be verified by vendor's solicitor)





Location

You'd be hard pushed to find a town more steeped in maritime history than Greenwich. Its Thames-side location is joined by the Cutty Sark and the National Maritime Museum. Greenwich Park is a Royal open space featuring the Royal Observatory and the prime meridian line.

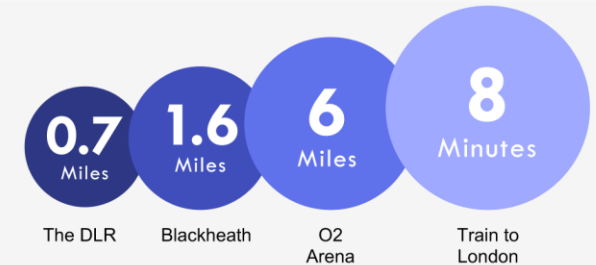
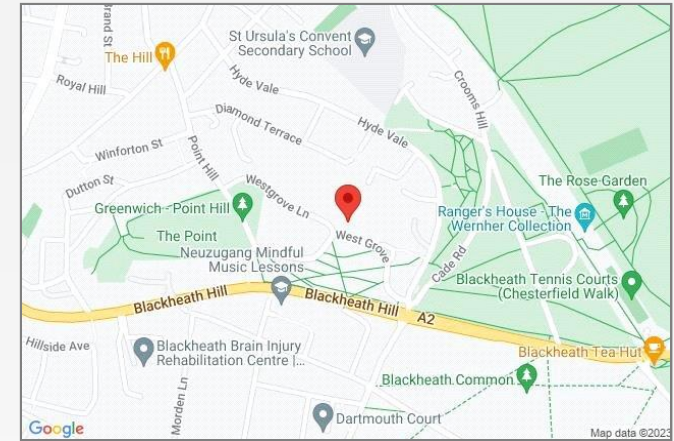
The town centre is known for its craft and antiques markets, with bars, restaurants and the 'Up The Creek' comedy club attracting residents, tourists and Greenwich University students alike.

Additional Information

Local Authority: London Borough of Greenwich / Council Tax: Band D (£1,814.23 pa) / EPC Rating: C

Property Location

West Grove, London, SE10 8QT



*All distances from branch postcode. Train time from nearest station.

**FOR MORE INFORMATION
CONTACT US TODAY.**

020 8297 8777

Robinson Jackson
27 Lewis Grove,
Lewisham,
London, SE13 6BG

lewisham@robinson-jackson.com

