



# Ottley Drive | London, SE3 9GF

-  1
-  1
-  1

Asking Price £315,000

Leasehold

**ROBINSON-JACKSON**  
Our service will *move* you

## Ottley Drive, London

Robinson Jackson are delighted to present this one bedroom first floor apartment in immaculate condition and benefiting from balcony and secure underground parking. The property is conveniently located for Sutcliffe Park and Kidbrooke mainline station.

### Property Features

- Chain free
- 24 Hour concierge
- Lift
- One bedroom
- Balcony
- Allocated parking
- On site gym
- Short walk to Kidbrooke station



## Interior

**Entrance Hall** 4.47m x 1.7m (14'8" x 5'7") Entrance door, two cupboards, one housing plumbing for washing machine and space for tumble dryer, wood laminate flooring

**Open plan lounge/kitchen** 7.4m x 3.43m (24'3" x 11'3") Double glazed window to rear, double glazed door to balcony, radiator, wood effect laminate flooring, range of wall and base units with work surfaces above, integrated oven, hob, extractor, integrated fridge/freezer, dishwasher, one and half bowl stainless steel sink unit with mixer tap

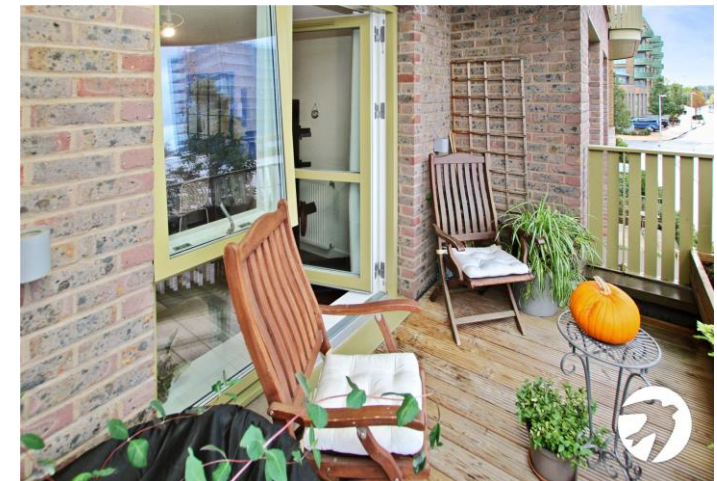
**Bedroom** 4.45m x 3.38m (14'7" x 11'1") Double glazed window to rear, radiator, carpet

**Bathroom** 2.13m x 2.13m (7' x 7') Panelled bath with glass screen and shower above, wash hand basin, concealed cistern wc, tiled walls and floor, heated towel rail



## Exterior

**Parking** Allocated parking





## Property Location

Ottley Drive, London, SE3 9GF



\*All distances from SE9 2RL postcode. Train time from Falconwood station.

## Leasehold Information

The vendor advises us of the following:

Unexpired lease term: 119 years (approx)

Service charge: £300.00 pcm inc ground rent

To be verified by your solicitor

- Council Tax: C
- EPC Rating: B

Kidbrooke Station, where various transport links make an ideal location for central London commuters. The station boasts regular services to London Bridge (16 mins), Waterloo East (22 mins), Cannon Street (25 mins), Victoria (31 mins) and Canary Wharf (34 mins). There are also two bus routes that run through Kidbrooke Village serving Lewisham through to Woolwich as well as a direct link between Kidbrooke Village and North Greenwich allowing easy access to the Jubilee line. Blackheath is less than two miles away with a good selection of shops, bars, cafes and restaurants, and Greenwich is less than three miles away

FOR MORE INFORMATION  
CONTACT US TODAY.

020 8859 9600

Robinson Jackson  
2-4 Court Yard,  
Eltham,  
London SE9 5PZ

eltham@robinson-jackson.com

