



Treble Road | DA10 0ED



Asking Price: £325,000-£350,000

Freehold

**ROBINSON-JACKSON**  
Our service will *move* you



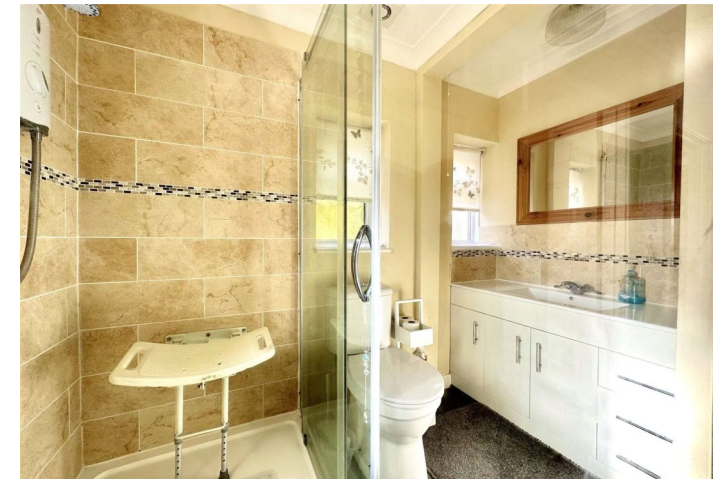
# Treble Road,

Robinson Jackson are delighted to present this three-bedroom semi-detached home, located on a corner plot on a tree lined road in the heart of Swanscombe. The property boasts a spacious living room, a separate dining room, three generously sized bedrooms, and a first-floor bathroom.

The property benefits from excellent transport links, making it a commuter's dream. Swanscombe & Ebbsfleet stations are just a short distance away, offering regular services to London and other major cities. Additionally, the A2 and M25 motorways are easily accessible.

## Property Features

- Council Tax:
- EPC Rating: E
- Corner Plot
- Potential to Extend (STPP)
- Three Bedrooms
- Two Reception Rooms
- First Floor Bathroom
- Low Maintenance Rear Garden





## Interior

**Entrance Porch** Double glazed door to front. Double glazed windows to front. Laminate flooring.

**Living Room** 5.55m x 3.26m (18'3" x 10'8") Double glazed bay window to front. Double glazed window to side. Carpet. Two radiators. Stairs to first floor.

**Dining Room** 3.12m x 3.12m (10'3" x 10'3") Double glazed sliding door to rear. Carpet. Radiator. Gas fire. Storage cupboard.

**Kitchen** 3.12m x 2.33m (10'3" x 7'8") Double glazed window to side. Double glazed door to rear. Laminate flooring. Part tiled walls. Range of wall & base units with complementary work surfaces over. Stainless steel sink. Integrated gas hob & electric oven. Plumbed for washing machine. Space for fridge freezer.

**Lean To** 5.01m x 1.67m (16'5" x 5'6") Double glazed sliding door to rear. Double glazed windows to side. Laminate flooring.

**Master Bedroom** 3.2m x 2.94m (10'6" x 9'8") Two double glazed windows to front. Carpet. Radiator. Built-in wardrobe.

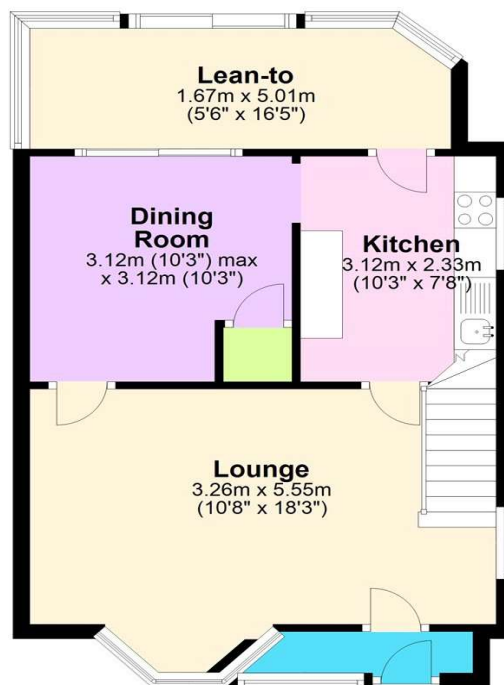
**Bedroom Two** 3.2m x 2.84m (10'6" x 9'4") Two double glazed windows to rear. Carpet. Radiator.

**Bedroom Three** 2.52m x 2.25m (8'3" x 7'5") Double glazed window to front. Carpet. Radiator.

**Bathroom** 2.34m x 2.13m (7'8" x 7') Frosted double glazed window to side & rear. Vinyl flooring. Part tiled walls. Low level WC. Vanity wash hand basin. Shower cubicle with Mira power shower. Heated towel rail.

### Ground Floor

Approx. 46.6 sq. metres (501.9 sq. feet)



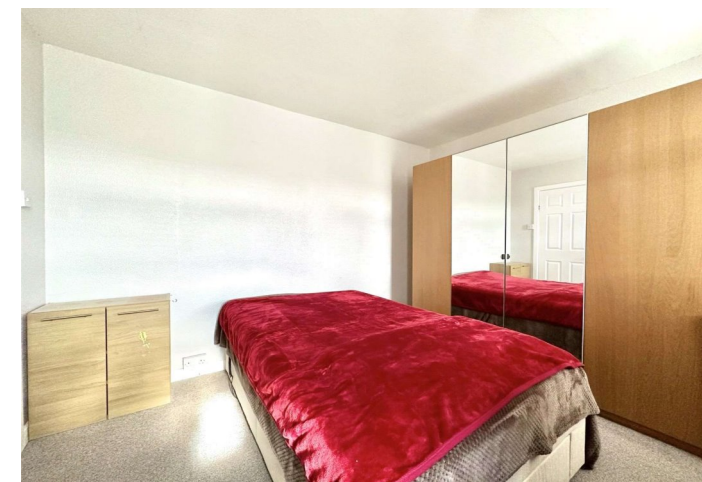
### First Floor

Approx. 36.0 sq. metres (387.3 sq. feet)



Total area: approx. 82.6 sq. metres (889.1 sq. feet)

This plan is for general layout guidance and may not be to scale.  
Plan produced using PlanUp.







## Exterior

Front Garden: Laid to lawn to front & side.

Rear Garden: Approx. 40ft. Paved. Patio. Flower beds.

Outside tap. Brick built shed. Side access.

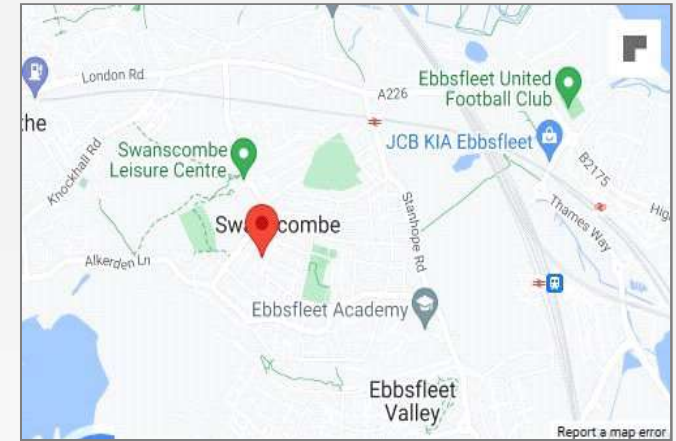
## Additional Information

Dartford Borough Council - Tax Band B

Total floor area: 83 sq. metres

## Property Location

Trebble Road, DA10 0ED



\*All distances from branch postcode. Train time from nearest station.

FOR MORE INFORMATION  
CONTACT US TODAY.

01322 624440

Robinson Jackson  
39 High Street,  
Swanscombe  
Kent,  
DA10 0AG

swanscombe@robinson-jackson.com

