



Eltham Green Road | London, SE9 6BE



3



1



1

Price on application

Freehold

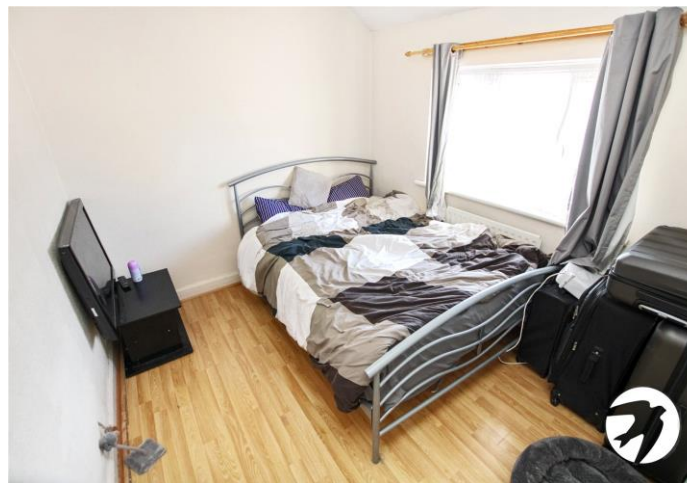
ROBINSON-JACKSON
Our service will *move* you

Eltham Green Road, London

Robinson Jackson are delighted to present this spacious three bedroom semi-detached house with off street parking for several cars. The property is conveniently located for local schools, bus routes, Eltham High Street & Kidbrooke mainline station,

Property Features

- Three bedrooms
- Semi detached
- Off street parking
- First floor bathroom
- Convenient for Eltham High Street
- Short walk to Kidbrooke Station



Interior

Entrance Hall Door to side, radiator, laminate flooring, stairs to first floor

Lounge 6.5m x 4.01m (21'4" x 13'2") Two double glazed windows to front, two radiators, wood laminate flooring, dado rail

Kitchen 4.5m x 2.62m (14'9" x 8'7") Double glazed window to rear, door to garden, wall and base units, single stainless steel sink, integrated oven and hob, part tiled walls, radiator, larder cupboard housing wall mounted boiler, tiled floor

Landing Double glazed window to side, carpet

Bedroom 1 4.27m x 4.1m (14' x 13'5") Double glazed window to front, radiator, built in wardrobe, laminate flooring

Bedroom 2 3.48m x 2.51m (11'5" x 8'3") Double glazed window to rear, radiator, built in wardrobe, laminate flooring

Bedroom 3 3.2m x 3.28m (10'6" x 10'9") Double glazed window to front, radiator, built in wardrobe, laminate flooring

Bathroom Double glazed window to rear, radiator, panelled bath, pedestal wash hand basin, tiled walls

Separate WC Double glazed window to side, low level wc, tiled walls, radiator



Exterior

Garden Patio, mainly laid to lawn, shed

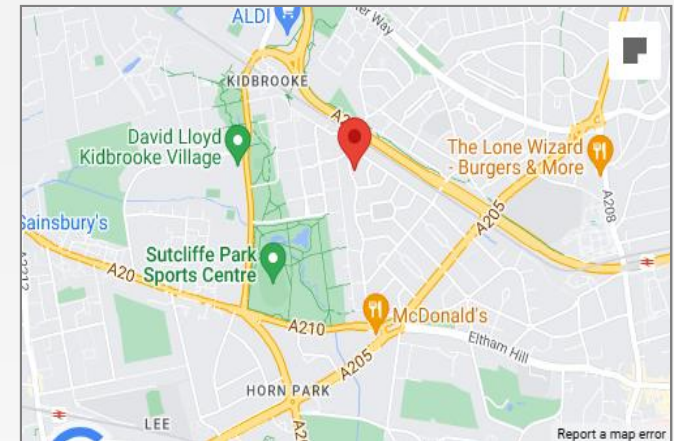
Parking Off street parking to front





Property Location

Eltham Green Road, London, SE9 6BE



Additional Information

Eltham is a popular town in the Royal Borough of Greenwich, with £2 million recently been spent on a High Street revitalisation programme, including a new cinema and sky bar complex.

There's a mainline train station offering a direct route to London and the magnificent Art Deco Eltham Palace. The Heritage Restaurant & Bar at the Tudor Barn, a modern leisure centre, the Bob Hope Theatre and Well Hall Pleasaunce can all be found in the town.

- Council Tax: C
- EPC Rating: D

FOR MORE INFORMATION
CONTACT US TODAY.

020 8859 9600

Robinson Jackson
2-4 Court Yard,
Eltham,
London SE9 5PZ

eltham@robinson-jackson.com

