



Pinewood Drive | South Orpington, Kent, BR6 9NL



Guide Price £475,000 - £500,000 Freehold

ROBINSON-JACKSON
Our service will *move* you

Pinewood Drive

South Orpington

An opportunity to purchase this three bedroom bay fronted semi detached house situated in a sought after location. Although in need of some updating the property offers much potential & is Chain Free.

Property Features

- Central Heating & Double Glazing
- In Need Of Updating
- Garage & Driveway
- Popular Location
- Front & Rear Gardens
- Close to Quality Schools
- Council Tax: E
- EPC Rating: D



Interior

Entrance Porch: Double glazed opaque composite door to front. Double glazed opaque windows to front and sides. Tiled floor.

Entrance Hall: Wooden door with stained glass panelling to front. Double glazed opaque window to side. Stairs to first floor with understairs cupboard. Radiator and fitted carpet. Door leading to:-

Lounge: 4.06m x 3.7m (13'4" x 12'2") (Maximum Dimensions). Double glazed bay window to front. Tiled fireplace with gas fire. Two radiators and fitted carpet.

Dining Room: 3.73m x 3.68m (12'3" x 12'1") Sliding double glazed patio door leading to lean to/conservatory. Gas fire with wooden surround. Radiator and fitted carpet.

Kitchen: 2.95m x 2.06m (9'8" x 6'9") Fitted with a matching range of wooden wall and base units with work surfaces. Sink with drainer and chrome mixer tap. Space for gas cooker, under counter fridge freezer, washing machine and dishwasher. Double glazed opaque window to side. Understairs cupboard. Glass door leading to conservatory. Vinyl tiled flooring.

Lean To/Conservatory: 4.57m x 1.98m (15' x 6'6") Glass French Doors opening onto rear garden. Glass door to side. Fitted carpet.

Landing: Double glazed opaque window to side. Fitted carpet. Access to loft.

Bedroom 1: 3.96m x 3.43m (13' x 11'3") (Maximum Dimensions). Double glazed half bay window to front. Fitted wardrobes. Radiator and fitted carpet.

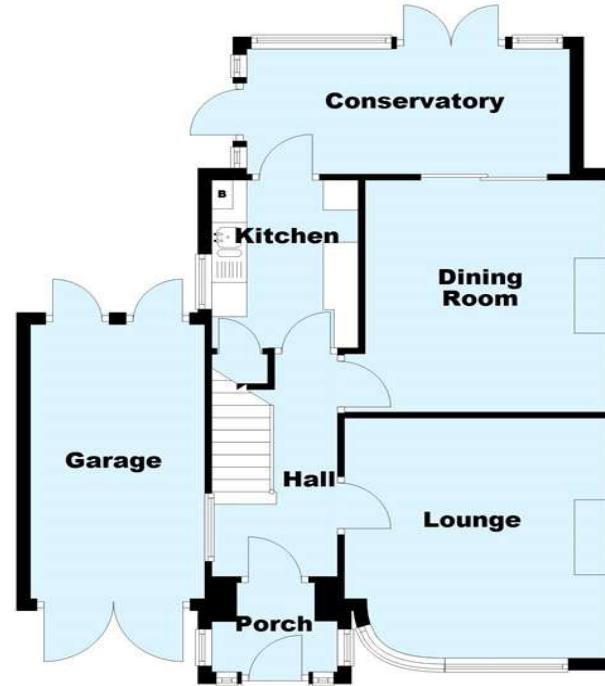
Bedroom 2: 3.76m x 3.43m (12'4" x 11'3") Double glazed window to rear. Airing cupboard. Built in cupboard. Radiator and fitted carpet.

Bedroom 3: 2.67m x 1.98m (8'9" x 6'6") (Maximum Dimensions). Double glazed window to front. Radiator and fitted carpet.

Bathroom: Fitted with matching panelled bath with electric shower over and wash hand basin set in vanity unit. Double glazed opaque window to side. Radiator.

Separate WC: Double glazed opaque window to side. White wc.

Ground Floor Approx. 55.7 sq. metres (599.1 sq. feet)



First Floor Approx. 42.3 sq. metres (454.8 sq. feet)



Total area: approx. 97.9 sq. metres (1053.9 sq. feet)

This plan is for general layout guidance and may not be to scale.
Plan produced using PlanUp.





Exterior

Front Garden: Laid to lawn

Rear Garden: In need of attention. Patio area with central ornamental feature. Small pond. Arched trellis leading to grassed area with greenhouse. Two wooden sheds.

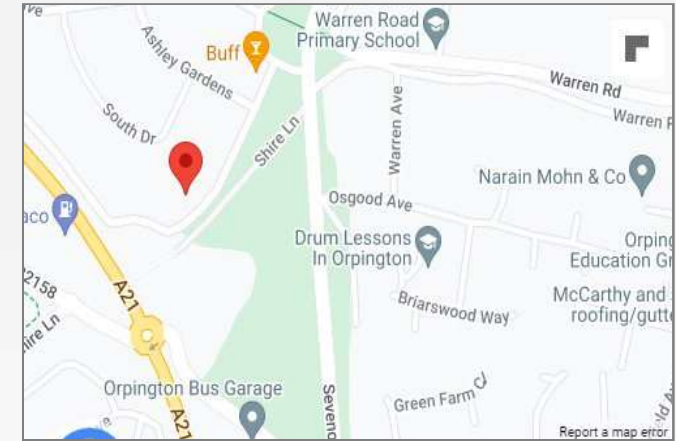
Garage & Driveway:

Additional Information

Pinewood Drive is situated on the Green Street Green/South Orpington borders and is ideally located for Orpington Town Centre, local bus routes and various quality schools including Warren Road.

Property Location

Pinewood Drive, South Orpington, Kent, BR6 9NL



**FOR MORE INFORMATION
CONTACT US TODAY.**

01689 833322

Robinson Jackson
292 High Street,
Orpington,
Kent BR6 0NF

orpington@robinson-jackson.com

