



Swallow Road | Coxheath, Maidstone, ME17 4FE



Offers Over £450,000 Freehold

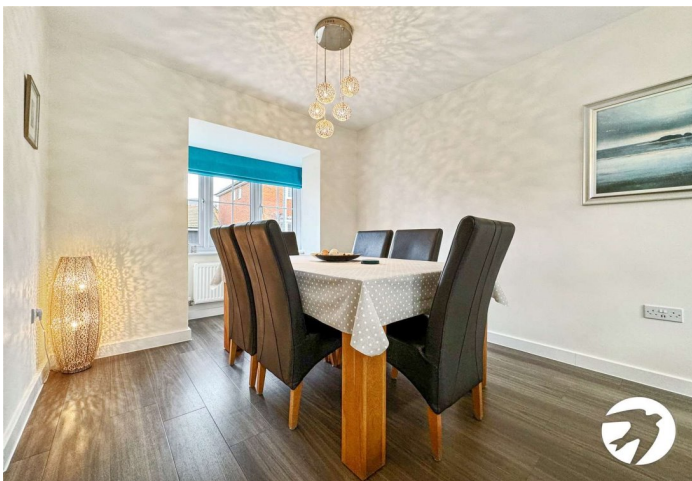
ROBINSON MICHAEL & JACKSON
Our service will *move* you

Swallow Road, Coxheath

This stunning 3-bedroom detached house is beautifully presented and finished to the highest standards throughout. It is located in a secluded position on a modern development.

Property Features

- Council Tax: E
- EPC Rating: B
- Beautiful modern 3-bedroom detached house
- Spacious downstairs open-plan living space
- 5 Years NHBC Warranty Remaining
- Large family bathroom & en-suite shower room
- Driveway & garage
- Private south-facing rear garden.
- Close to Staplehurst and Maidstone stations
- Local bus routes



Interior

Entrance Hall Leads through into the hallway

Living Room 5.77m x 4.75m (18'11" x 15'7") Open planned with the dining room, square bay window to the front

Dining Room 4.75m x 2.46m (15'7" x 8'1") Open planned with the living room, patio doors leading to the garden

Kitchen 3.48m x 2.82m (11'5" x 9'3") Window to the rear, integrated appliances, hob & oven

Downstairs WC Leads off from entrance hall, basin & WC

Bedroom 1 3.4m x 3.3m (11'2" x 10'10") Window to the rear, double bedroom, benefits from an en-suite, fitted wardrobes

En-Suite Walk in shower, basin & WC

Bedroom 2 3.2m x 2.87m (10'6" x 9'5") Window to the rear, double bedroom

Bedroom 3 2.74m x 2.1m (9' x 6'11") Window to the front, currently used as an office

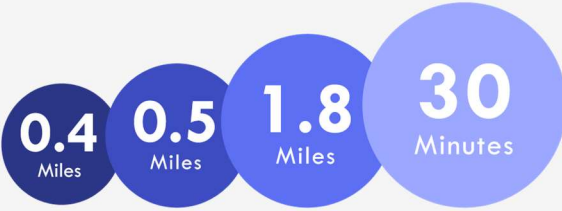
Bathroom Window to the rear, shower over bath, basin & WC





Property Location

Swallow Road, Coxheath, Maidstone, ME17 4FE



Maidstone East Train Station Maidstone West Train Station M20 Junction 7 Bluewater

*All distances from branch postcode. Train time from nearest station.

**FOR MORE INFORMATION
CONTACT US TODAY.**

01622 476666
Robinson Michael & Jackson
15A King Street
Maidstone,
Kent ME14 1BA
maidstone@robinson-jackson.com



These particulars do not form part of an offer or contract and must not be relied upon as statements or representation of fact. Any areas, measurements, journey times or distances are approximate. The text, images, photographs and plans are for guidance only and are not necessarily comprehensive. It should not be assumed that the property has all necessary planning, building regulation or other consents and we have not tested any services, equipment or facilities. References to tenure are based on information supplied by the seller. Buyer should verify all information themselves by inspection or otherwise prior to a legal commitment to purchase. Photos and images are subject to copyright.