



Lonsdale Crescent | Fleet Estate, Dartford, DA2 6LG



Asking Price £425,000

Freehold

ROBINSON-JACKSON
Our service will *move* you

Lonsdale Crescent, Fleet Estate

A lovely family home located on the ever popular Fleet Estate just a short distance from Bluewater, Fleetdown School, The M25 , A2 motorways and Darent Valley Hospital.

Property Features

- Council Tax: D
- EPC Rating: D
- Private Driveway To Front
- Shared Driveway Leading To A Garage
- Larger Than Average Corner Plot 50ft Rear Garden
- Large Conservatory
- Modern Shower Room
- Viewing Comes Highly Recommended



Interior

Entrance Porch: Double glazed entrance door and windows to front. Carpet.

Entrance Hall: Hardwood entrance door. With frosted window to side. Coved ceiling. Dado rail. Radiator. Carpeted stairs to first floor. Wood effect vinyl floor. Two cupboards under stairs. One housing the boiler the other the gas and electric meters.

Living Room: Double glazed bay window to front. Coved ceiling. Dado rail. Carpet. Feature fireplace with open fire.

Kitchen Diner: Double glazed door and window unit to conservatory. Double glazed window to rear. Coved ceiling. Dado rail. Radiator. Tile effect vinyl floor. Matching range of wall and base units with complimentary work surfaces. Stainless steel sink unit. Tiled splash backs. Built in electric double oven. Four ring gas hob. Built in dishwasher, washing machine and fridge.

Conservatory: Double glazed doors to garden. Double glazed windows to rear and side. Two radiators. Wood effect laminate flooring.

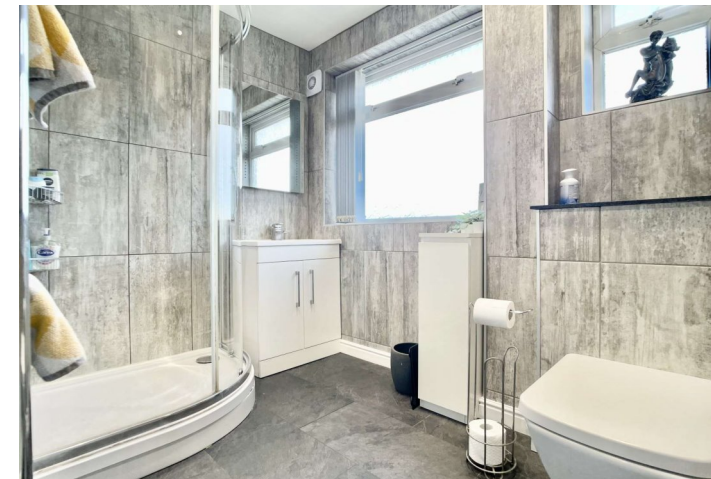
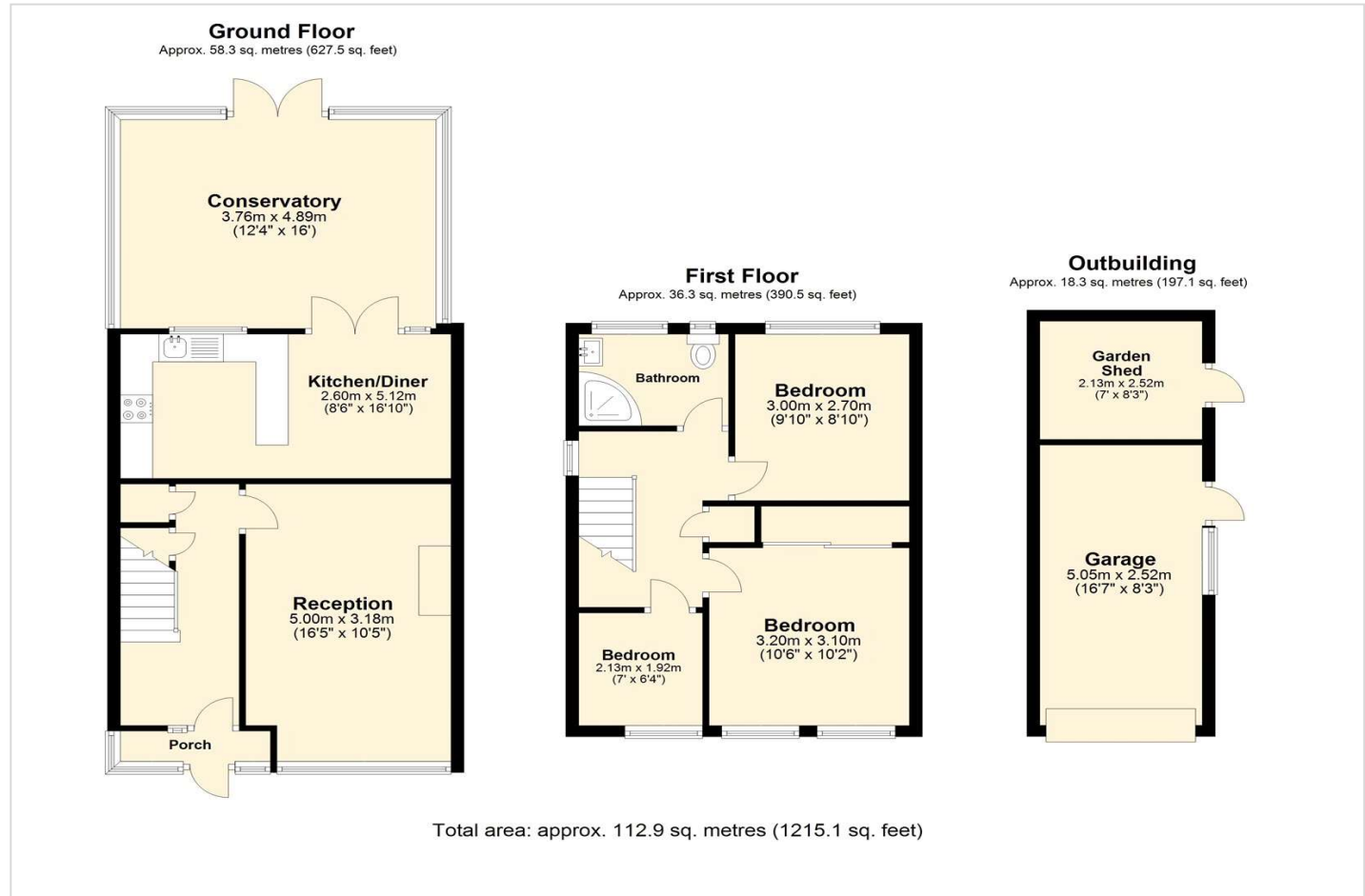
Landing: Double glazed window to side. Access to loft. Coved ceiling. Cupboard housing hot water cylinder. Carpet.

Bedroom One: Two double glazed windows to front. Coved ceiling. Radiator. Carpet. Built in mirrored wardrobe.

Bedroom Two: Double glazed window to rear. Radiator. Carpet.

Bedroom Three: Double glazed window to front. Coved ceiling. Radiator. Wood effect flooring.

Shower Room: Two frosted double glazed windows to rear. Spotlights. Low level WC. Vanity wash hand basin. Corner tiled shower cubicle with shower head and separate hand held shower. Tiled walls. Tile effect vinyl floor. Stainless steel heated towel rail.





Exterior

Rear Garden: North facing. Approx 50ft. Side pedestrian access. Patio area. Rear patio area. Laid to lawn. Shrub borders. Wendy house with storage underneath. Access to a brick built shed. Door to garage.

Garage. Up n over door. Power and light. Door to garden. Two windows to side.

Brick built shed: power and light. Door to garden.

Driveway: Block paved providing parking for up to two cars. Shared driveway leading to the garage.

Additional Information

The boiler is located in the understairs cupboard.

The rear garden faces North.

The front door faces South.

The owners are looking for a property.

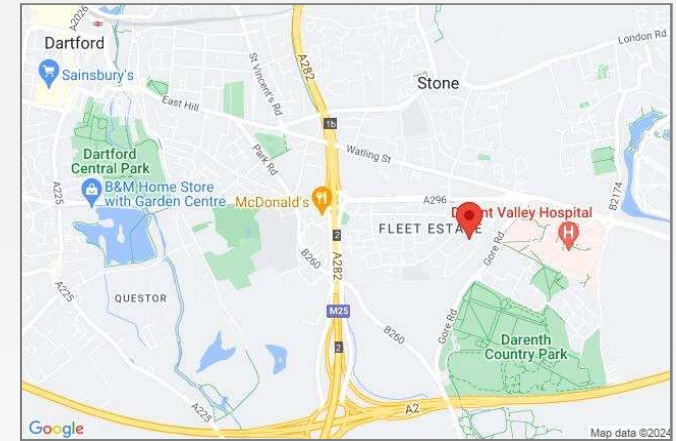
The owners have lived in the property for 37 years.

Council Tax Dartford Council Band D

The property measures 74 square metres.

Property Location

Lonsdale Crescent, Fleet Estate, Dartford, DA2 6LG



**FOR MORE INFORMATION
CONTACT US TODAY.**

01322 281281

Robinson Jackson
22 Market Street,
Dartford,
Kent DA1 1EZ

dartford@robinson-jackson.com

