



Invicta Road | Dartford, Kent, DA2 6AY



Asking Price £400,000

Freehold

**ROBINSON-JACKSON**  
Our service will *move* you

## Invicta Road, Dartford

Robinson Jackson are pleased to offer this modern EOT house as it was built in 2015 and has all the benefits that you expect from a modern property. It will ideally suit a FTB or young family.

### Property Features

- Council Tax: E
- EPC Rating: B
- Built in Circa 2015
- Fitted Kitchen
- Lounge Diner
- Upstairs Bathroom
- Downstairs WC
- Allocated Parking Space



## Interior

**Hallway** Double glazed door to front, radiator, laminate wood flooring. Stairs to First floor.

**Kitchen** Double glazed window to front, range of fitted wall and base units with complimentary worktops and tiled splash backs, stainless steel gas hob with extractor over, built in stainless steel electric oven, space for American style fridge freezer, plumbed for washing machine, one and half bowl sink unit with mixer taps, tiled floor.

**Downstairs WC** Frosted double glazed window to front, low level WC with fully enclosed cistern, vanity mounted wash had basin with mono tap. tiled floor.

**Lounge** Double glazed window to side, double glazed patio doors to rear, radiator x2, fitted carpet, under stairs storage cupboard.

**Landing** Double glazed window to side, fitted carpet.

**Bathroom** Double glazed frosted window to front, panel enclosed bath with glass shower screen, rainfall shower with handheld secondary shower head and thermostatic controls over Bath, wall mounted wash hand basin with mono tap, low level WC, chrome heated towel rail, tiled walls and floor.

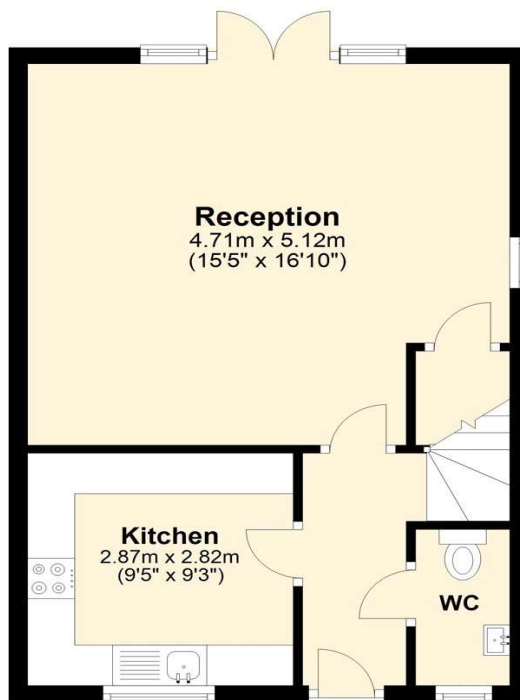
**Bedroom one** Double glazed window to rear, radiator, built in wardrobes with mirrored sliding doors, fitted carpet.

**Bedroom two** Double glazed window to front, radiator, fitted carpet.

**Bedroom three** Double glazed window to rear, radiator, loft access, fitted carpet.

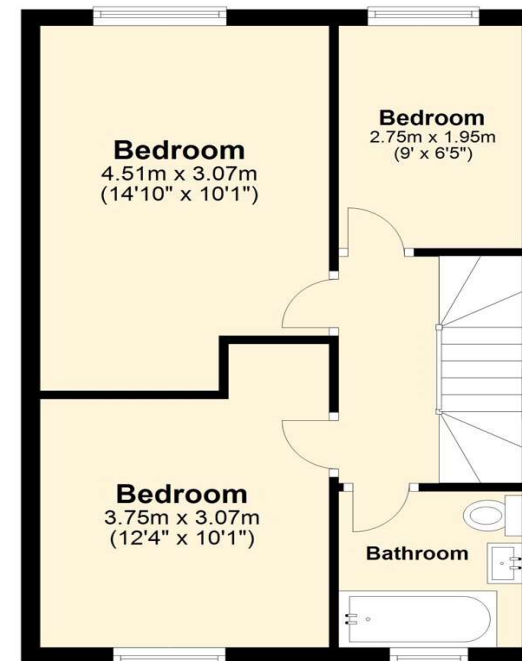
### Ground Floor

Approx. 39.3 sq. metres (423.3 sq. feet)

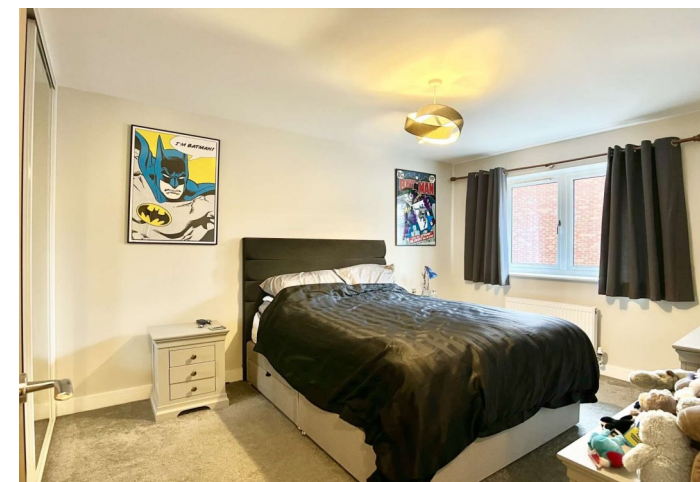
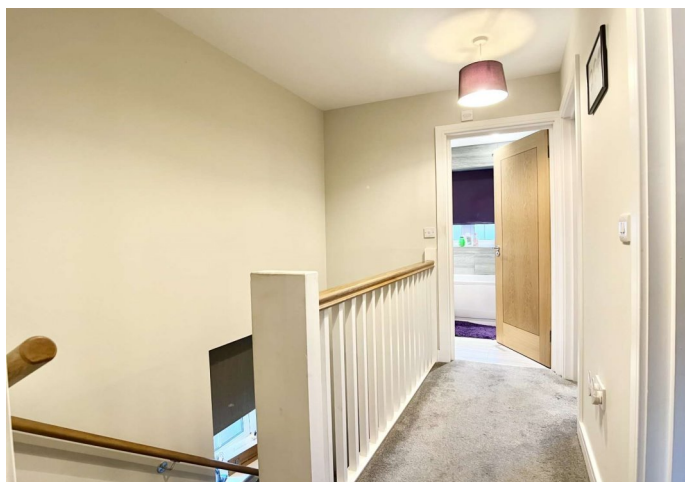


### First Floor

Approx. 39.3 sq. metres (423.3 sq. feet)



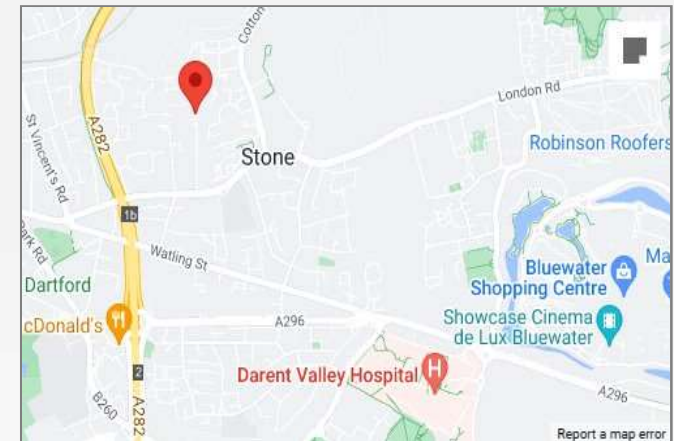
Total area: approx. 78.6 sq. metres (846.5 sq. feet)





## Property Location

Invicta Road, Dartford, Kent, DA2 6AY



## Exterior

The rear garden is a very low maintenance and has recently been paved. You also have side access to the residents parking area directly opposite your allocated space.

## Additional Information

Gas and electric meters are located outside the property.

Boiler is in the kitchen.

The property is subject to an Estate charge £200 per annum.

Allocated parking space to the side of the property.

Visitors parking spaces available.

**FOR MORE INFORMATION  
CONTACT US TODAY.**

01322 281281

Robinson Jackson  
22 Market Street,  
Dartford,  
Kent DA1 1EZ

[dartford@robinson-jackson.com](mailto:dartford@robinson-jackson.com)

