



Oak Road | Greenhithe, Kent, DA9 9DH



Guide Price: £325,000 to £350,000  
Freehold

**ROBINSON-JACKSON**  
Our service will *move* you

## Oak Road, Greenhithe

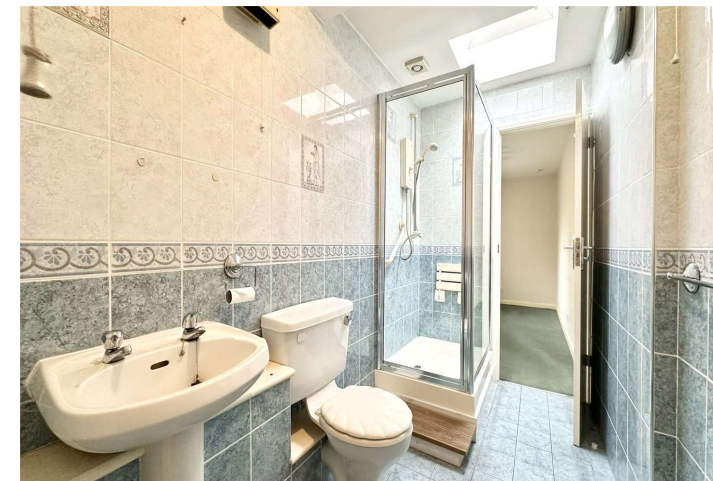
Robinson Jackson are delighted to present this three bedroom home situated on a 'no through road' within yards of Stone recreation ground.

On the ground floor this family home comprises two reception rooms, a kitchen, conservatory and has the added bonus of a third bedroom complete with shower room. The first floor has two bedrooms & a bathroom.

The property is in a great location with Bluewater shopping centre, Stone Crossing Station, Greenhithe station and good schools all within easy reach. Additionally, the A2 and M25 motorways are easily accessible, providing swift connections to various destinations.

## Property Features

- No Forward Chain
- Three Bedrooms
- Two Bathrooms
- Conservatory
- Cul-de-Sac Location
- Yards from Recreational Green Space



## Interior

**Entrance Hall:** 3.96m x 1.52m (13' x 5') Double glazed frosted window to front. Radiator. Carpet.

**Lounge:** 3.96m x 3.3m (13' x 10'10") Double glazed bay window to front. Electric feature fireplace. Radiator. Carpet.

**Dining Room:** 3.35m x 3.3m (11' x 10'10") Radiator. Carpet.

**Reception Room/Bedroom Three:** 3.94m x 2.08m (12'11" x 6'10") Double glazed window to side. Door to garden. Radiator. Carpet.

**Conservatory:** 3.05m x 2.46m (10' x 8'1") Double glazed windows to rear. Door to garden. Radiator. Tiled flooring.

**Shower Room:** 3.05m x 1.52m (10' x 5') Low level WC. Pedestal wash hand basin. Shower cubicle. Radiator. Skylight. Tiled walls and flooring.

**Kitchen:** 2.44m x 1.52m (8' x 5') Double glazed window to rear. Range of matching wall and base units with complimentary work surface over. Stainless steel sink with drainer. Integrated oven, gas hob and extractor. Space for dishwasher. Part tiled walls. Tiled flooring.

**Landing:** Carpet.

**Bedroom One:** 4.27m x 3.05m (14' x 10') Two double glazed windows to front. Radiator. Carpet.

**Bedroom Two:** 3.35m x 2.77m (11' x 9'1") Double glazed window to rear. Radiator. Carpet.

**Bathroom:** 2.44m x 2.08m (8' x 6'10") Double glazed frosted window to rear. Low level WC. Pedestal wash hand basin. Panelled bath. Radiator. Part tiled walls. Carpet.

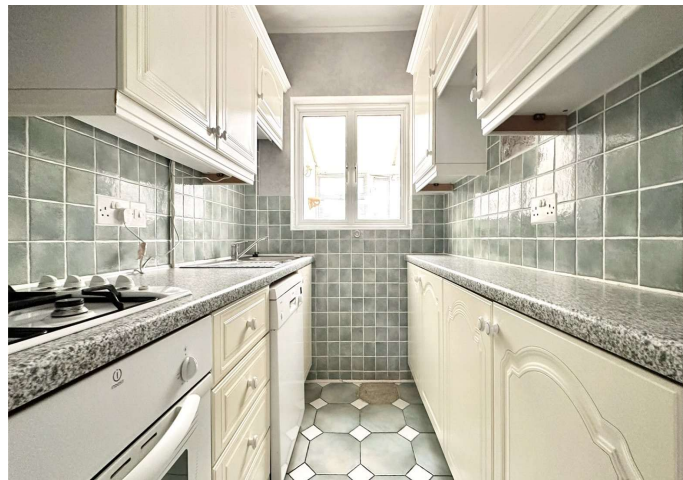
**Ground Floor**  
Approx. 59.9 sq. metres (644.7 sq. feet)



**First Floor**  
Approx. 35.0 sq. metres (377.0 sq. feet)



Total area: approx. 94.9 sq. metres (1021.8 sq. feet)





## Exterior

Rear Garden: Approximately 34ft. Paved patio. Rear gated access.  
Outside tap.

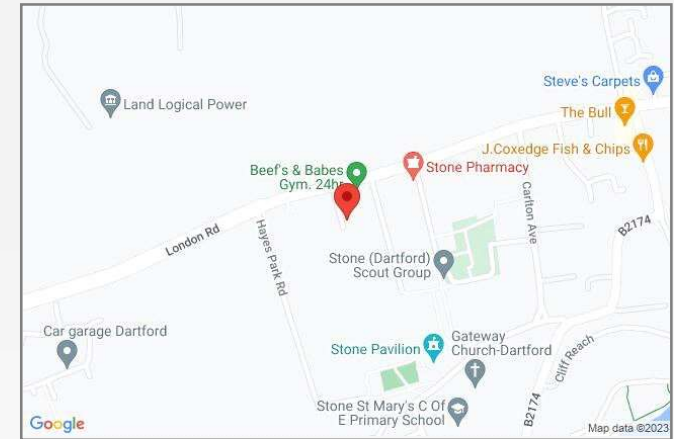
## Additional Information

Dartford Borough Council – Tax Band B

The property measures 87 square metres.

## Property Location

Oak Road, Greenhithe, Kent, DA9 9DH



FOR MORE INFORMATION  
CONTACT US TODAY.

01322 624440

Robinson Jackson  
39 High Street,  
Swanscombe  
Kent,  
DA10 0AG

swanscombe@robinson-jackson.com

