



Clifford Way
Maidstone
ME16 8GF
Leasehold

Guide Price £180,000 - £200,000

Introducing a stunning 2-bedroom flat boasting an array of desirable features. Situated in a sought-after location.

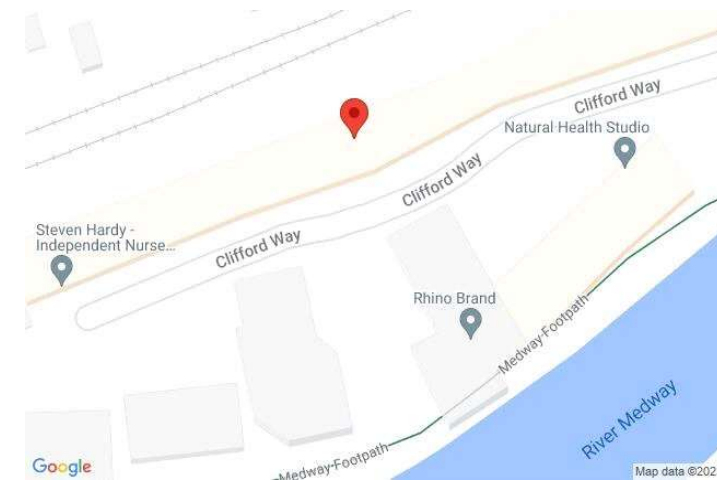
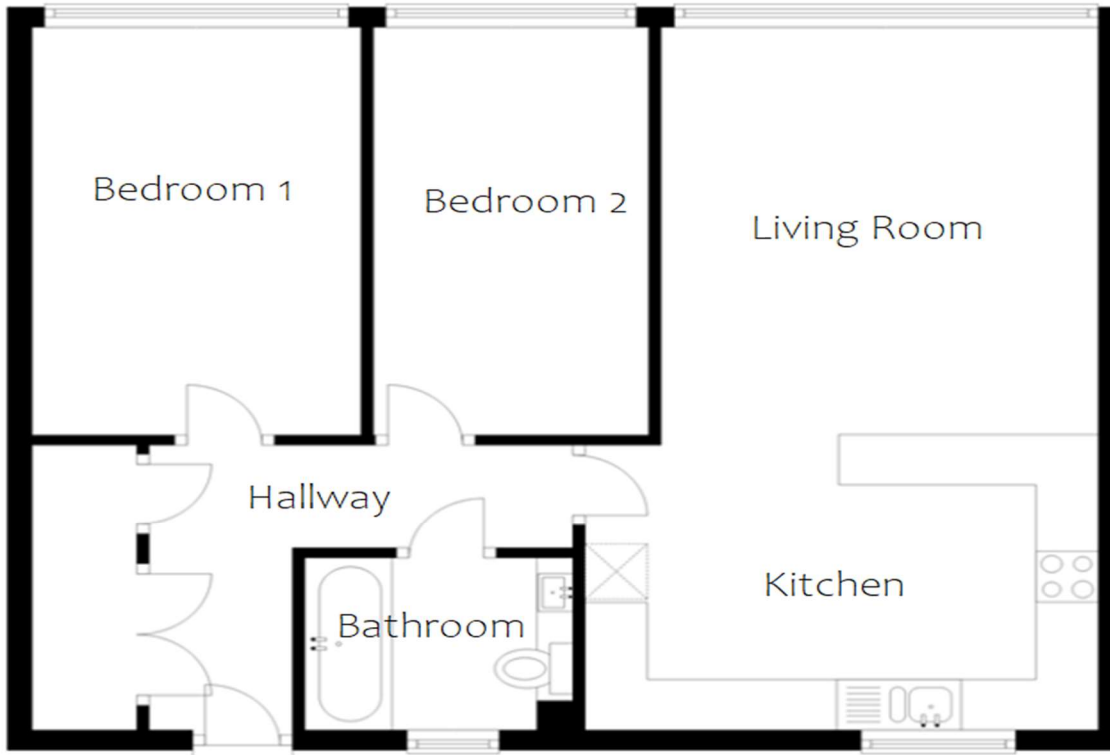
- Close to Maidstone Town Centre & Mainline Stations
- Allocated Parking
- No Chain
- Lift Access
- Open Planned Lounge/Kitchen

Guide Price £180,000 to £200,000



Council Tax: D
EPC Rating: B

ROBINSON MICHAEL & JACKSON
Our service will *move* you



**FOR MORE INFORMATION
CONTACT US TODAY.**

01622 476666
 Robinson Michael & Jackson
 15A King Street
 Maidstone,
 Kent ME14 1BA
maidstone@robinson-jackson.com



Interior

Living Room Open planned with the kitchen, windows to the front

Kitchen 7.34m x 4.22m (24'1" x 13'10") Window to the rear, open planned with living room, integrated hob and oven, dishwasher, washing machine and dryer

Bedroom 1 4.11m x 2.64m (13'6" x 8'8") Double bedroom, window to the front

Bedroom 2 4.11m x 2.13m (13'6" x 7') Window to the front, double bedroom

Bathroom Shower over bath, window to the rear, heated towel rail, basin & WC

Leasehold Information

Time remaining on lease: Approx. 136 years and 10 months

Service Charge: £208 Combined Service Charge & Ground Rent Monthly