



Foley Street  
Maidstone  
ME14 5BE  
Share of Freehold

Immerse yourself in this charming and unique ground-floor split-level, one bedroom apartment, just walking distance to town centre and mainline train stations.

- Share Of Freehold
- One Bedroom Ground Floor Apartment
- Victorian Conversion
- Private Rear Well Stocked Garden
- Walking Distance To Town Centre
- Complete Chain

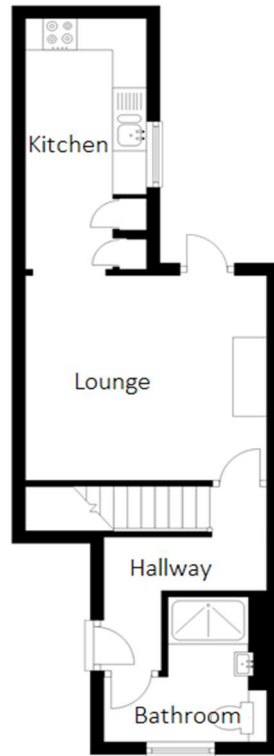


Council Tax: B  
EPC Rating: C

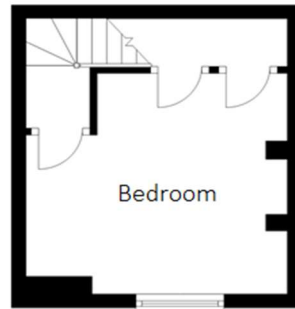
Asking Price £170,000

**ROBINSON MICHAEL & JACKSON**  
Our service will *move* you

## Ground Floor



## Lower Ground Floor



**FOR MORE INFORMATION  
CONTACT US TODAY.**

01622 476666

Robinson Michael & Jackson  
15A King Street  
Maidstone,  
Kent ME14 1BA

maidstone@robinson-jackson.com



## Interior

**Entrance Hall** Leads through into property

**Lounge** 3.53m x 3.18m (11'7" x 10'5") Door leading into the garden, spacious area, fireplace

**Kitchen** 3.96m x 1.73m (13' x 5'8") Window to the side, space for washing machine, integrated hob & oven

**Bedroom** 3.56m x 3.15m (11'8" x 10'4") Window to the front, fitted wardrobes, double bedroom

**Shower Room** Window to the front, walk in shower, basin & WC