



Covesfield | Northfleet, Kent, DA11 0EG



3



2



2

Guide Price £350,000 - £375,000

Freehold

**ROBINSON MICHAEL & JACKSON**

Our service will *move* you

## Covesfield, Northfleet

Located in a popular residential development close to town is this well-kept 3-bedroom mid terrace town house with ensuite to master bedroom and allocated parking. No chain!

### Property Features

- Council Tax: D
- EPC Rating: C
- No Forward Chain
- Walking Distance to Train Station
- Laid Over Three Floors
- Ground floor Cloakroom
- En-Suite Shower Room
- Versatile Accommodation
- Allocated Parking Space
- Easy Access to Amenities



## Interior

**Entrance Hall:** 6.58m x 1.04m (21'7" x 3'5") Entrance door into hallway. Stairs to first floor. Radiator. Laminate flooring. Doors to: -

**Reception Room 2:** 3.68m x 3.05m (12'1" x 10') Double glazed French doors to rear. Built-in storage cupboard. Radiator. Laminate flooring.

**GF Cloakroom:** 1.6m x 1.27m (5'3" x 4'2") Low level w.c. Wall mounted sink unit with tiled back splash. Laminate flooring.

**Kitchen:** 4.06m x 2.5m (13'4" x 8'2") Double glazed window to front. Wall and base units with work surface over. Stainless steel sink unit with mixer taps over. Tiled back splash. Integrated oven, grill and five ring gas hob with stainless steel extractor fan over. Radiator. Tiled flooring. Spotlights.

**First Floor Landing:** 3.68m x 2.82m (12'1" x 9'3") Carpet. Stairs to second floor. Doors to: -

**Lounge:** 4.04m x 3.68m (13'3" x 12'1") Two double glazed French doors to front leading to Juliett balcony. Radiator.

**Bedroom 3:** 3.68m x 2.87m (12'1" x 9'5") Two double glazed window to rear. Radiator. Built-in wardrobe. Carpet.

**Second Floor Landing:** 3.73m x 1.9m (12'3" x 6'3") Carpet. Doors to: -

**Bedroom 1:** 4.9m x 3.8m (16'1" x 12'6") Double glazed window to front. Radiator. Built-in wardrobes. TV ceiling bracket. Door to: -

**En-suite:** 1.52m x 1.55m (5' x 5'1") Corner shower with tiled surround. Pedestal wash hand basin. Low level w.c. Half tiled walls. Radiator. Laminate flooring. Spotlights. Loft hatch.

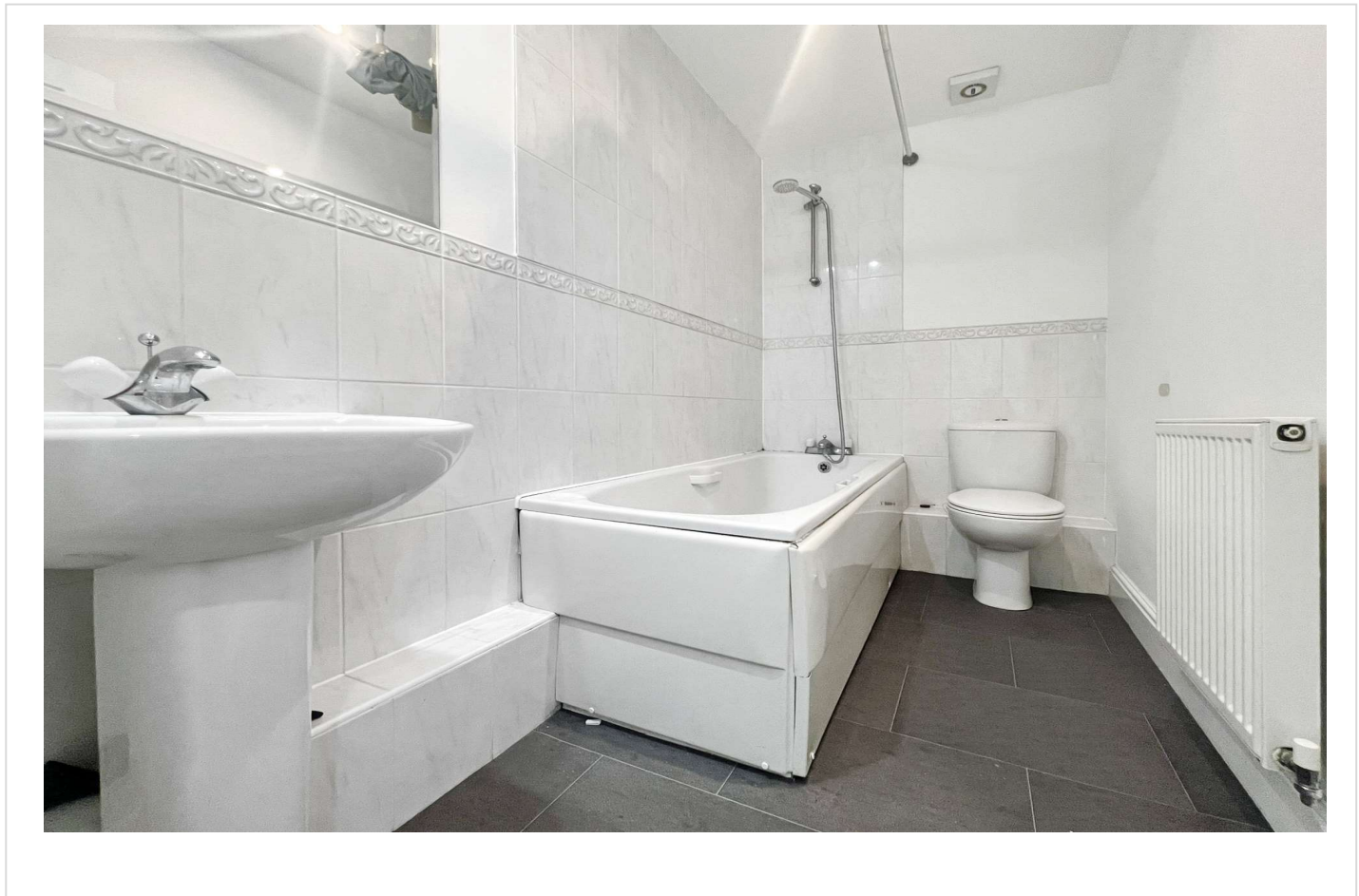
**Bedroom 2:** 3.7m x 2.87m (12'2" x 9'5") Two double glazed window to rear. Radiator. Carpet.

**Bathroom:** 2.64m x 1.42m (8'8" x 4'8") Suite comprising panelled bath with shower over. Pedestal wash hand basin. Low level w.c. Radiator. Half tiled walls. Spotlights. Laminate flooring. Loft hatch.

## Exterior

**Front Garden:** Approx. 30ft: Patio area. Laid to lawn. Rear pedestrian access.

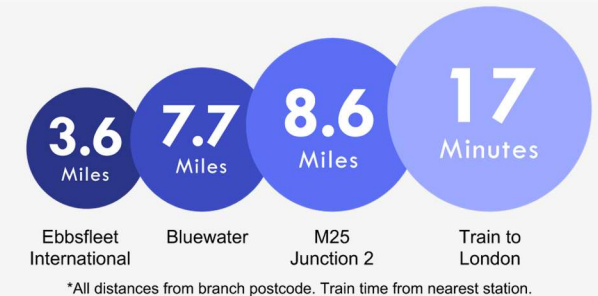
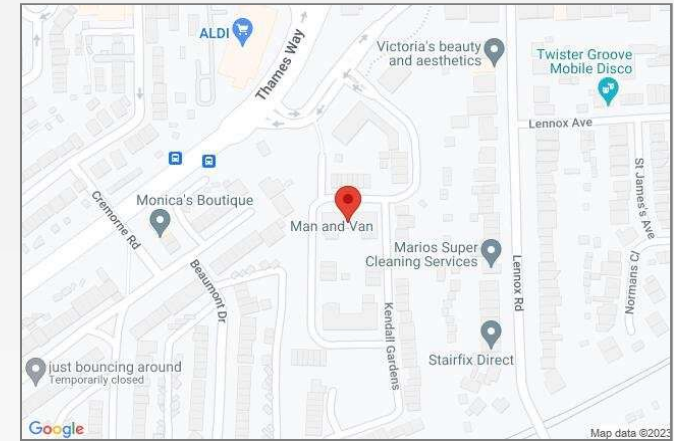
**Parking:** Allocated space.





## Property Location

Covesfield, Northfleet, Kent, DA11 0EG



## Additional Information

The popular Heritage Park development combines stylish living with close proximity to rail links to the capital and excellent local amenities for modern lifestyles. High Speed One from Ebbsfleet International rail station offers services into London St. Pancras in just 17 minutes. Bluewater shopping centre is just 5 miles away and Junction 2 only 6 miles.

**FOR MORE INFORMATION  
CONTACT US TODAY.**

01474 333111

Robinson Michael & Jackson  
21A & B King Street,  
Gravesend,  
DA12 2EB

[gravesend@robinson-jackson.com](mailto:gravesend@robinson-jackson.com)

