



Salisbury Road | Chatterton Village, Kent, BR2 9PU



£442,500

Freehold

**ROBINSON-JACKSON**  
Our service will *move* you

## Salisbury Road, Chatterton Village

Situated in the highly sought after Chatterton Village is this two bedroom semi-detached house. The property is conveniently situated for a range of amenities and offers much potential.

### Property Features

- Council Tax: D
- EPC Rating: D
- Central Heating
- Double Glazing
- Two Reception Rooms
- Much Potential
- Close to Local Amenities
- Popular Location



## Interior

**Entrance Hall:** Front door. Stairs to first floor with understairs storage.

**Lounge:** 4.93m x 3.1m (16'2" x 10'2") Gas fire, carpet and double glazed box bay window to front.

**Dining Room:** 4.22m x 2.72m (13'10" x 8'11") Gas fire, double glazed window and door to rear. Radiator and carpet

**Kitchen:** 3.18m x 1.93m (10'5" x 6'4") Fitted with a range of wall and base units. Freestanding cooker. Sink unit with drainer and mixer tap. Double glazed window to rear. Access to:-

**Rear Lobby:** With door to garden.

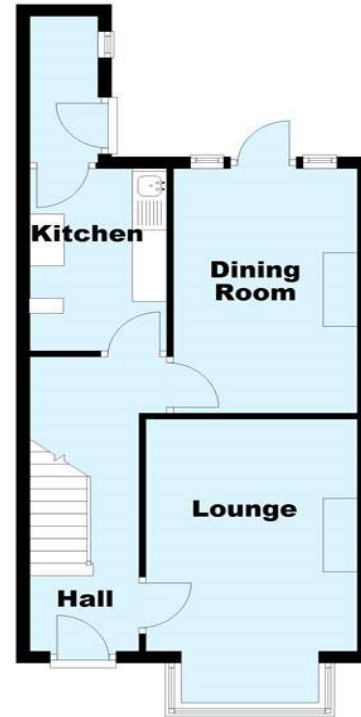
**Landing:** Carpet and access to loft.

**Bedroom 1:** 4.85m x 4.78m (15'11" x 15'8") Double glazed box window to front and additional double glazed window to front, radiator and carpet.

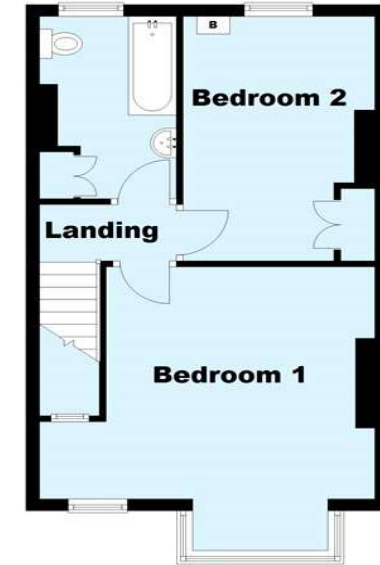
**Bedroom 2:** 4.11m x 2.74m (13'6" x 9') Double glazed window to rear, radiator and carpet.

**Bathroom:** With a three piece suite comprising panelled bath with shower, wash hand basin set in vanity unit and wc. Double glazed window to rear.

## Ground Floor



## First Floor



This plan is for general layout guidance and may not be to scale.  
Plan produced using PlanUp.





## Exterior

Rear Garden: Mainly laid to lawn and with side access.

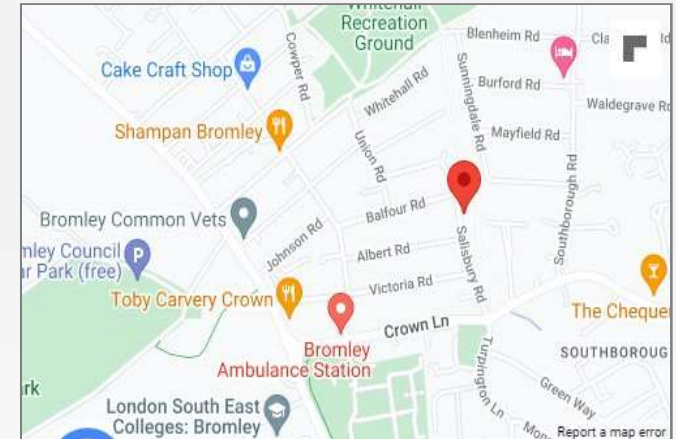
## Additional Information

The property is situated in the highly sought after Chatterton Village area of Bromley and is conveniently situated for both Petts Wood and Bromley Town Centres.

Although the property needs some modernising the property offers a vast amount of potential.

## Property Location

Salisbury Road, Chatterton Village, Kent, BR2 9PU



**FOR MORE INFORMATION  
CONTACT US TODAY.**

01689 833322

Robinson Jackson  
292 High Street,  
Orpington,  
Kent BR6 0NF

[orpington@robinson-jackson.com](mailto:orpington@robinson-jackson.com)

