



Charlotte Court | High Street, Newington, ME9 7FQ



Asking Price £325,000 Freehold

ROBINSON MICHAEL & JACKSON

Our service will *move* you

Charlotte Court, High Street

Situated in Newington, this four-bedroom townhouse features a practical layout spread across three floors.

The ground floor comprises an open-plan lounge and kitchen area, seamlessly connected for efficient use of space. A WC is also conveniently located on this level. The lounge is designed for functionality, offering ample room for seating arrangements and entertainment setups, while the kitchen is equipped with modern appliances, ample storage, and sleek countertops.

Moving up to the first floor, three good-sized bedrooms are available, each providing comfortable living spaces and natural light. These bedrooms offer versatility in terms of furniture placement and personalization. A well-appointed bathroom on this floor ensures convenience for residents and guests, featuring modern fixtures and a functional layout.

The second floor is dedicated to the master bedroom, providing a private retreat for homeowners. This spacious bedroom accommodates a king-sized bed and additional furniture, along with an ensuite bathroom for added luxury and convenience. The ensuite is equipped with premium fixtures, a walk-in shower, and elegant finishes.

Externally, the townhouse includes a carport for sheltered parking and a garden area for outdoor activities such as relaxation or gardening. These features complement the property's functionality and add value to urban living.



Property Features

- Council Tax: D
- EPC Rating: B
- Four bedroom townhouse
- Car port
- Ensuite bathroom
- Popular location
- No chain
- Ground floor W/C

Interior

Entrance Hall:

Ground Floor Cloakroom:

Kitchen: 1.93m x 3.33m (6'4" x 10'11")

Lounge: 3.94m x 5.13m (12'11" x 16'10")

Bedroom 2: 3.94m x 2.67m (12'11" x 8'9")

Bedroom 3: 1.96m x 3.45m (6'5" x 11'4")

Bedroom 4: 1.85m x 2.46m (6'1" x 8'1")

Bathroom:

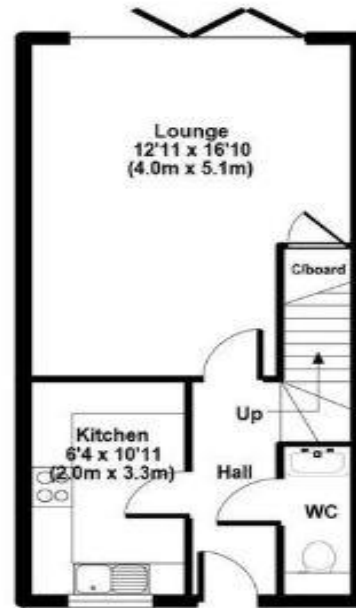
Master Bedroom: 3.96m x 3.6m (13' x 11'10")

Ensuite:

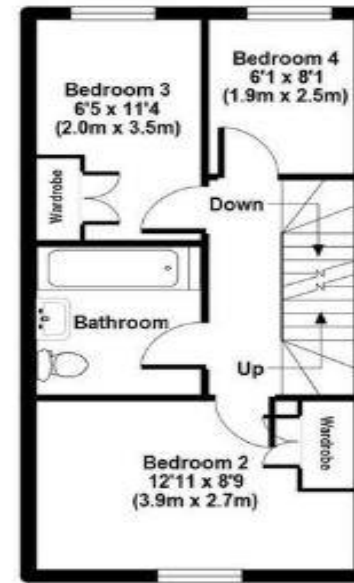
Exterior

Rear Garden

Car Port



Ground Floor



First Floor



Second Floor

APPROX GROSS INTERNAL FLOOR AREA: 960.65 sq. ft / 89.28 sq. m

Charlotte Court

FOR ILLUSTRATIVE PURPOSES ONLY. NOT TO SCALE.

Whilst every attempt has been made to ensure the accuracy of the floor plan shown, all measurements, positioning, fixtures, features, fittings and any other data shown are an approximate interpretation for illustrative purposes only and are not to scale. No responsibility is taken for any error, omission, mis-statement or use of data shown.

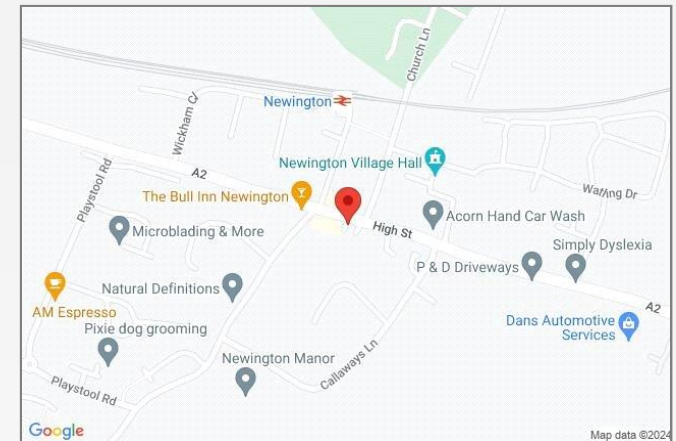
The above statement applies to both 'The Floor Plan People' and the Estate Agent marketing this property.
(c) THE FLOOR PLAN PEOPLE. unauthorised reproduction prohibited.





Property Location

Charlotte Court, High Street, Newington, ME9 7FQ



READY TO MOVE?
Scan to instruct us

**FOR MORE INFORMATION
CONTACT US TODAY.**

01795 479999
Robinson Michael & Jackson
38 West Street,
Sittingbourne,
Kent, ME10 1AP
sittingbourne@robinson-jackson.com



These particulars do not form part of an offer or contract and must not be relied upon as statements or representation of fact. Any areas, measurements, journey times or distances are approximate. The text, images, photographs and plans are for guidance only and are not necessarily comprehensive. It should not be assumed that the property has all necessary planning, building regulation or other consents and we have not tested any services, equipment or facilities. References to tenure are based on information supplied by the seller. Buyer should verify all information themselves by inspection or otherwise prior to a legal commitment to purchase. Photos and images are subject to copyright.