



Trevor Drive | Maidstone, Kent, ME16 0QN



Guide Price £425,000 - £450,000

Freehold

ROBINSON MICHAEL & JACKSON
Our service will *move* you

Trevor Drive, Maidstone

GUIDE PRICE £425,000-£450,000

Welcome to your dream home in the heart of Allington! This modern 2-bedroom semi-detached chalet bungalow offers a perfect blend of contemporary design and comfort.

Property Features

- Council Tax: D
- EPC Rating: D
- Two Double Bedrooms
- Off Street Parking & Garage
- Modern Throughout
- Lounge/Diner
- No Chain
- Close To M20 Motorway
- Close To Local School



Interior

Living Room 5.05m x 3.35m (16'7" x 11') Squared bay window to the front, spacious area, built in fireplace

Dining Room 4.14m x 3.35m (13'7" x 11') Open planned into the living room, doors leading out into the garden, leads through to the kitchen

Kitchen 3.23m x 2.84m (10'7" x 9'4") Doors leading into the kitchen, breakfast bar, integrated appliances

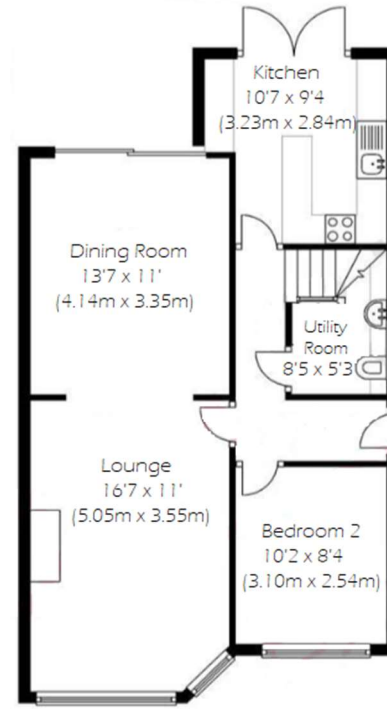
Utility Room 2.57m x 1.6m (8'5" x 5'3") Window to the side, basin, heated towel rail, WC, space for washing machine & tumble dryer

Bedroom 2 3.1m x 8;4 (10'2" x 8;4) Window to the front, located on the ground floor, double bedroom

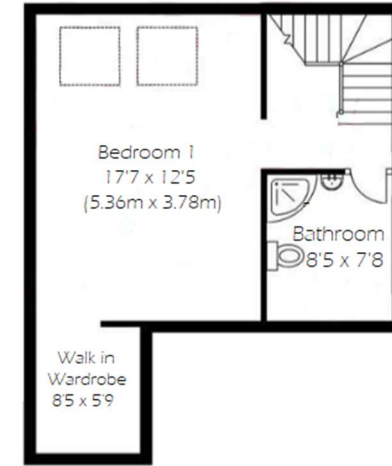
Bedroom 1 5.36m x 3.78m (17'7" x 12'5") Velux windows, double bedroom, benefits from bathroom and a walk in wardrobe

Walk In Wardrobe 2.57m x 1.75m (8'5" x 5'9") Spacious, shelves built in

Bathroom 2.57m x 2.34m (8'5" x 7'8") Window to the side, walk in shower, basin & WC



GROUND FLOOR



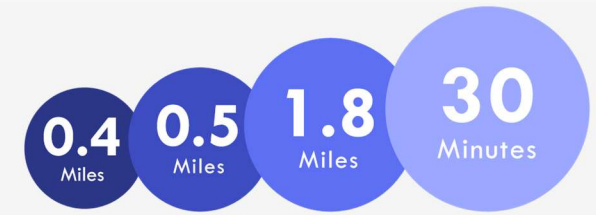
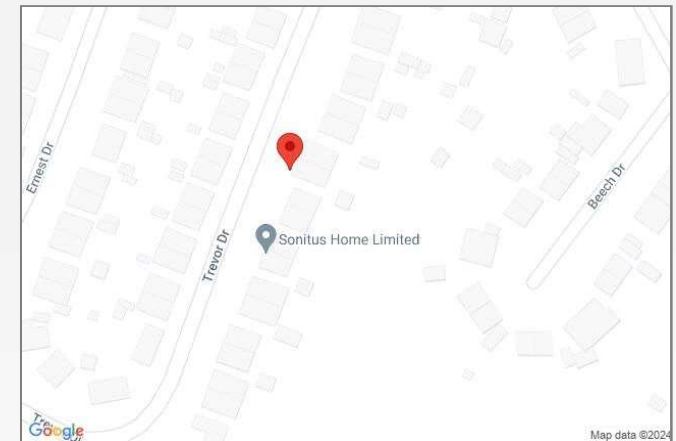
FIRST FLOOR





Property Location

Trevor Drive, Maidstone, Kent, ME16 0QN



Maidstone East Train Station Maidstone West Train Station M20 Junction 7 Bluewater

*All distances from branch postcode. Train time from nearest station.

**FOR MORE INFORMATION
CONTACT US TODAY.**

01622 476666

Robinson Michael & Jackson
15A King Street
Maidstone,
Kent ME14 1BA

maidstone@robinson-jackson.com



These particulars do not form part of an offer or contract and must not be relied upon as statements or representation of fact. Any areas, measurements, journey times or distances are approximate. The text, images, photographs and plans are for guidance only and are not necessarily comprehensive. It should not be assumed that the property has all necessary planning, building regulation or other consents and we have not tested any services, equipment or facilities. References to tenure are based on information supplied by the seller. Buyer should verify all information themselves by inspection or otherwise prior to a legal commitment to purchase. Photos and images are subject to copyright.