



Maidstone Road

Nettlestead Green | Maidstone | ME18 5HG



Maidstone Road

Nettlestead Green , Maidstone, ME18 5HG

Guide Price £500,000 - £525,000

Freehold

Charming 3-bed semi-detached house in a rural setting. Features include a lovely garden, off-street parking, garage, and outbuildings. Perfect for a family seeking a peaceful countryside retreat.

As you step inside, you'll be greeted by a sense of warmth and character that permeates throughout. The well-lit interior creates an inviting atmosphere.

This delightful property is ideally located, allowing residents to enjoy the best of both worlds - the tranquillity of rural living and easy access to nearby amenities.

Benefitting from:

- Over 1700 sq ft
- Semi Detached Family Home
- Three Double Bedrooms
- Situated Over Three Floors
- Solar Panels
- Large Secluded Garden
- Potential To Extend to Side (STPP)
- Short Drive to Major Transport Links
- Large Driveway Providing Parking for Multiple Vehicles
- Council Tax: E
- EPC Rating: C



Accommodation

Porch Two windows to front, two windows to side, door

Hall Stairs, open plan, door

Lounge/Diner 3.8m x 6.23 (12'6" x 18'4") Window to front, fireplace, open plan to Dining Room, double door, door, window to side

Study 2.8m x 2.16m (9'2" x 7'1") Window to side, door

Lobby Storage cupboard, door

Reception Room 3.35m x 2.77m (11' x 9'1") Window to side, open plan, door

Downstairs WC Sliding door, door, basin & WC

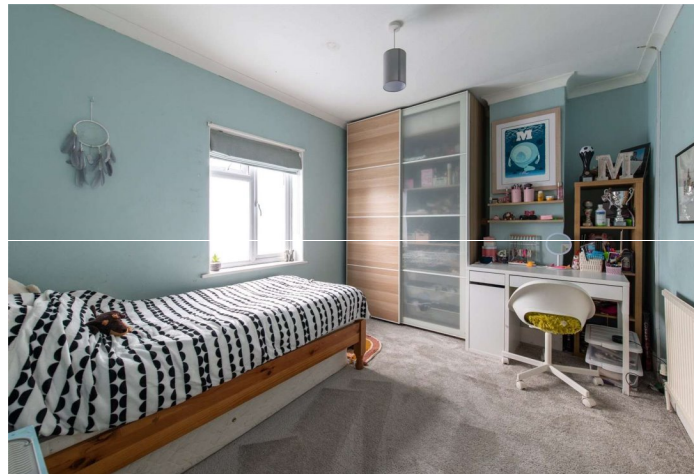
Utility Room 2.1m x 1.27m (6'11" x 4'2") Storage

Kitchen/ Breakfast Room 4.4m x 4.24m (14'5" x 13'11")
Two windows to rear, two windows to side, double door, door

Garage Window to side, window to rear, Up and over door, door

Shed Window to front, door

Landing Stairs, open plan, door





Bedroom 2 3.43m x 3.25m (11'3" x 10'8") Window to front, door, double room, located on first floor

Bedroom 3 3.25m x 2.97m (10'8" x 9'9") Window to rear, door, double bedroom, located on first floor

Storage Window to rear

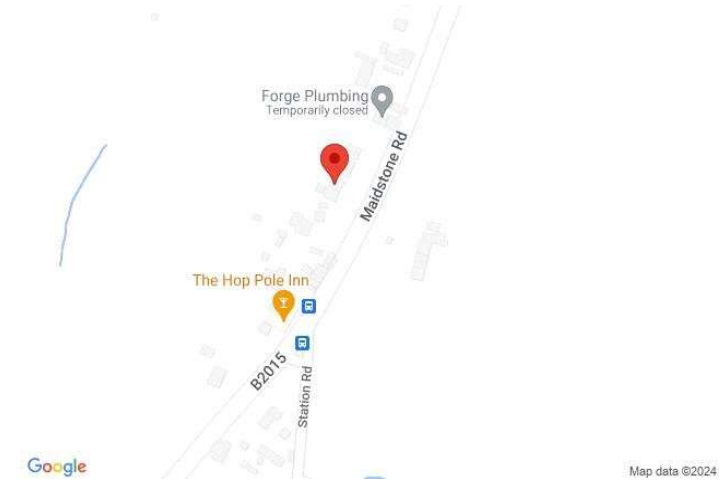
Bathroom Window to front, door, shower over bath, basin & WC

Master Bedroom 4.93m x 4.11m (16'2" x 13'6") Door, located on second floor, double bedroom

Eaves Storage

En-Suite Window to side





Important Notice

These particulars do not form part of an offer or contract and must not be relied upon as statements or representation of fact. Any areas, measurements, journey times or distances are approximate. The text, images, photographs and plans are for guidance only and are not necessarily comprehensive. It should not be assumed that the property has all necessary planning, building regulation or other consents and we have not tested any services, equipment or facilities. References to tenure are based on information supplied by the seller. Buyer should verify all information themselves by inspection or otherwise prior to a legal commitment to purchase. Photos and images are subject to copyright.

Location



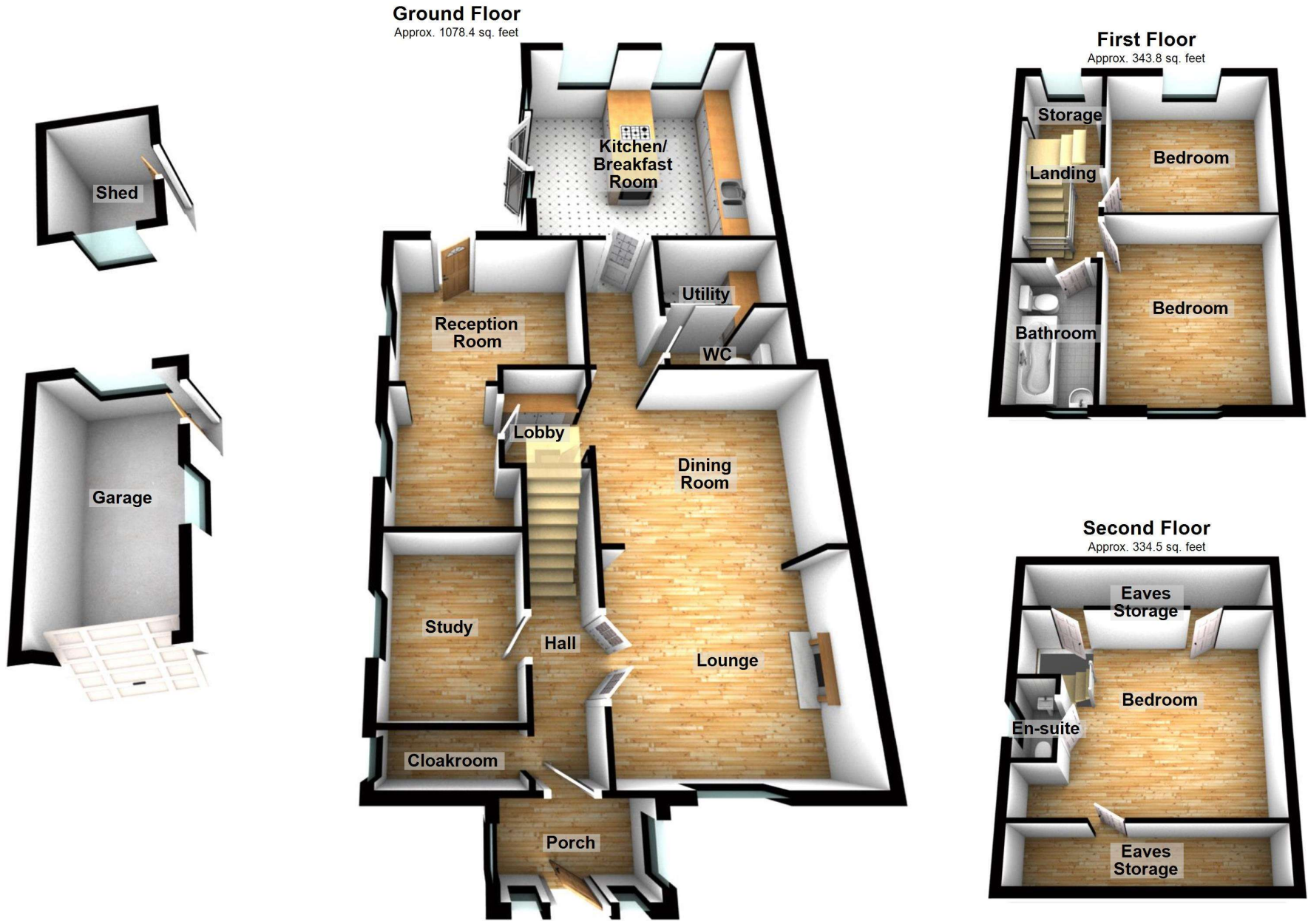
(All distances & times are approximates)

FOR MORE INFORMATION CONTACT US TODAY.

Tj Yardley - Branch Manager
 01622 476666
 Robinson Michael & Jackson
 15A King Street
 Maidstone,
 Kent ME14 1BA
maidstone@robinson-jackson.com

SALES | MORTGAGES | LEGALS

ROBINSON MICHAEL & JACKSON



Please be advised this plan is offered for marketing purposes only. It can not be relied upon for exact or precise measurements, angles, window or door openings. Whilst every effort is made to ensure the accuracy the company or provider accepts no responsibility for the content.

Plan produced using PlanUp.

