



Creek Mill Way | Waterford Place, Dartford, DA1 2FB



Guide Price £280,000 to £290,000

Leasehold

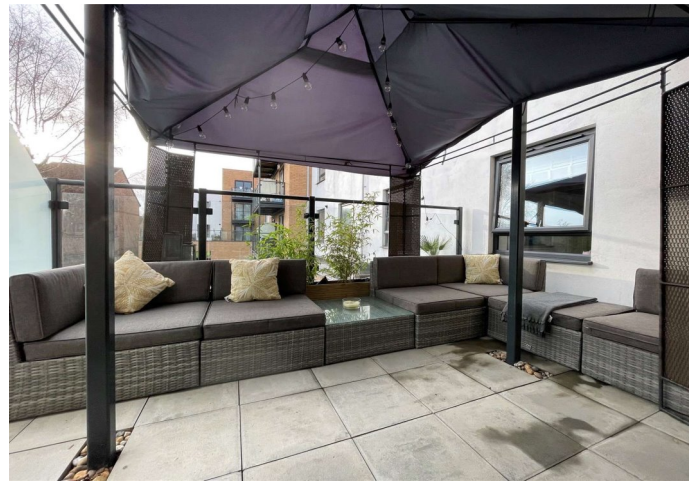
ROBINSON-JACKSON
Our service will *move* you

Creek Mill Way, Waterford Place

Benefitting from a large terrace and two residents parking spaces Robinson Jackson are delight to bring to the market for the first time this modern two double bedroom first floor apartment.

Property Features

- Council Tax: D
- EPC Rating: B
- Large South West Facing Terrace
- Two Allocated Parking Spaces
- Two Double Bedrooms
- En-suite Shower Room To Master Bedroom
- Gas Central Heating
- Ideally Located For Dartford Town Centre And Station



Interior

Entrance Hall: Entrance door. Radiator. Wood flooring. Entryphone. Cupboard housing ventilation system and fuse box.

Living Room: Double glazed patio doors leading to a large terrace. Two pendant lights. Spotlights in the kitchen area. Two radiators. Wood flooring. Matching range of wall and base units. Complimentary quartz work-surfaces. Built in fridge freezer. Cupboard housing combi boiler. Built in Zanussi electric oven. Built in washing machine. Tiled splash back. Stainless steel electric cooker hood. Stainless steel sink unit.

Bedroom One: Double glazed window to rear. Radiator. Carpet. Built in mirrored slide robe. Door to en-suite shower room.

En-suite Shower Room: Spotlights. Extractor fan. Tiled double shower cubicle with rainfall shower and separate handheld shower. Wash hand basin. Wall hung WC. Tiled floor. Part tiled walls. Stainless steel heated towel rail.

Bedroom Two: Double glazed window to rear. Radiator. Carpet.

Bathroom: Spotlights. Extractor fan. Bath with mixer tap and hand held shower. Wall hung low level WC. Wash hand basin. Stainless steel heated towel rail. Tiled floor. Part tiled walls.

Exterior

Large Balcony: South West facing.

Parking Spaces: Two spaces. One under ground and one external.

Communal garden area with children's play area.

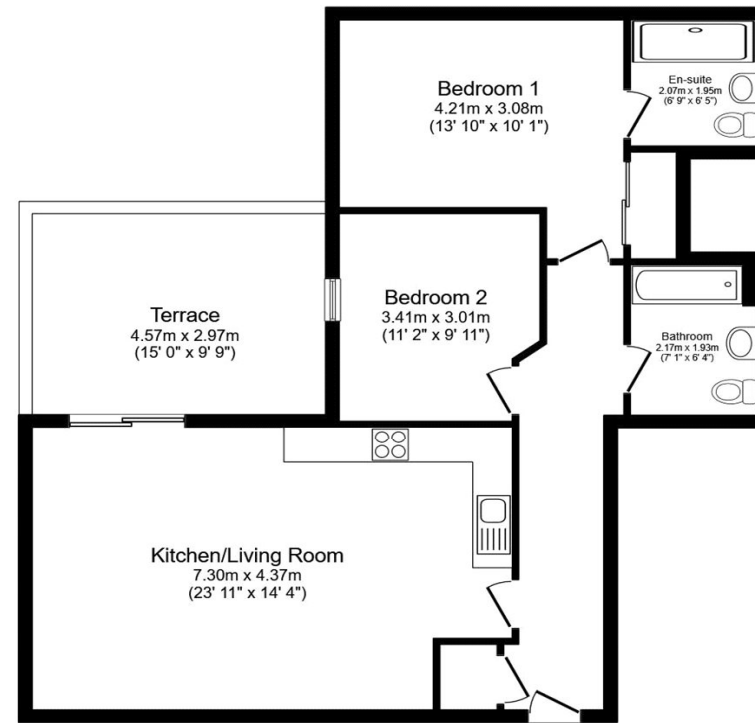
External bin store.

Leasehold Information

Time remaining on lease: Approx. 117 years

Ground Rent: £350 Per Annum

Service Charge: £1,400 Per Annum



Floor Plan

Total floor area 80.0 sq. m. (861 sq. ft.) approx

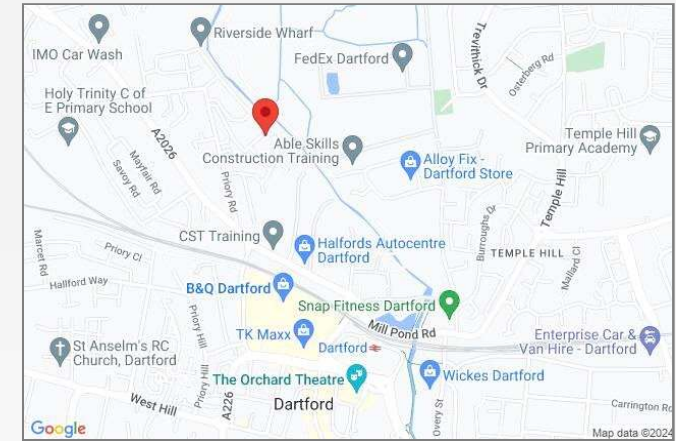
This floor plan is for illustrative purposes only. It is not drawn to scale. Any measurements, floor areas (including any total floor area), openings and orientation are approximate. No details are guaranteed they cannot be relied upon for any purpose and they do not form part of any agreement. No liability is taken for any error, omission or misstatement. A party must rely upon its own inspection(s).
Plan produced for Your Move. Powered by www.focalagent.com





Property Location

Creek Mill Way, Waterford Place, Dartford, DA1 2FB



Additional Information

The property benefits from a South West facing terrace.

The property benefits from 2 residents parking bays.

Lease - 117 years remaining.

Ground Rent £350 per annum.

Service Charge. £1400 per annum.

The boiler is located in the kitchen.

Council Tax - Dartford Band D

The owners are looking for another property.

The owners have lived in the property from new.

**FOR MORE INFORMATION
CONTACT US TODAY.**

01322 281281

Robinson Jackson
22 Market Street,
Dartford,
Kent DA1 1EZ

dartford@robinson-jackson.com



These particulars do not form part of an offer or contract and must not be relied upon as statements or representation of fact. Any areas, measurements, journey times or distances are approximate. The text, images, photographs and plans are for guidance only and are not necessarily comprehensive. It should not be assumed that the property has all necessary planning, building regulation or other consents and we have not tested any services, equipment or facilities. References to tenure are based on information supplied by the seller. Buyer should verify all information themselves by inspection or otherwise prior to a legal commitment to purchase. Photos and images are subject to copyright.