



Sayes Court Road | St Pauls Cray, Kent, BR5 2PG



Guide Price £335,000 - £360,000

Freehold

ROBINSON-JACKSON
Our service will *move* you

Sayes Court Road

St Pauls Cray

An opportunity to purchase this three bedroom semi detached house situated within a few minutes walk of St Mary Station. Although in need of updating the property offers much potential & is Chain Free

Property Features

- Double Glazing
- Central Heating (Untested)
- Shared Driveway & Garage
- Complete Updating Required
- Much Potential
- Close To Station & Shops
- Chain Free
- Council Tax: C
- EPC Rating: D



Interior

Entrance Hall: Double glazed door to front. Stairs to first floor. Radiator and carpet.

Lounge: 4.62m x 3.76m (15'2" x 12'4") Double glazed window to front, radiator and carpet.

Lobby Area: Double glazed door to rear. Understairs storage.

Kitchen/Diner: 4.62m x 2.51m (15'2" x 8'3") Fitted with wall and base units with work surfaces. Integrated oven and gas hob. Space for fridge freezer. Double glazed window to rear.

Landing: Access to loft and carpet.

Bedroom 1: 3.25m x 2.87m (10'8" x 9'5") Double glazed window to front, fitted wardrobes, radiator and carpet.

Bedroom 2: 3.5m x 3.02m (11'6" x 9'11") (Maximum dimensions). Double glazed window to rear radiator and carpet.

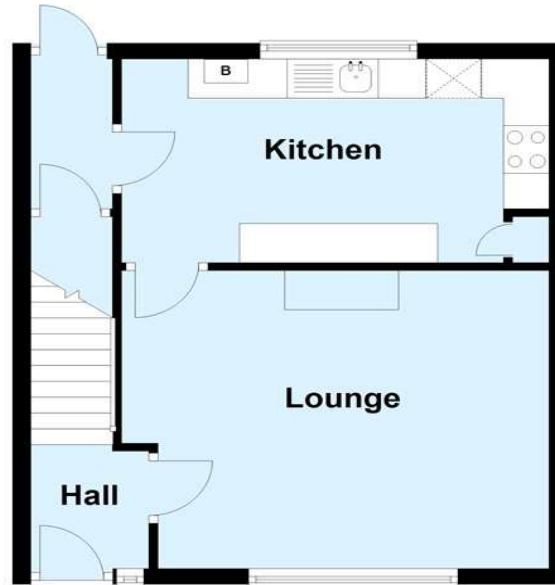
Bedroom 3: 2.34m x 2.13m (7'8" x 7') Double glazed window to front radiator and carpet.

Bathroom: With a panelled bath and wc. Double glazed window to rear.

Separate Wc: Double glazed window to rear.

Ground Floor

Approx. 37.0 sq. metres (397.9 sq. feet)



First Floor

Approx. 38.3 sq. metres (412.2 sq. feet)



Total area: approx. 75.3 sq. metres (810.2 sq. feet)

This plan is for general layout guidance and may not be to scale.
Plan produced using PlanUp.





Exterior

Rear Garden: In need of attention.

Shared Driveway: Leading to:

Detached Garage:

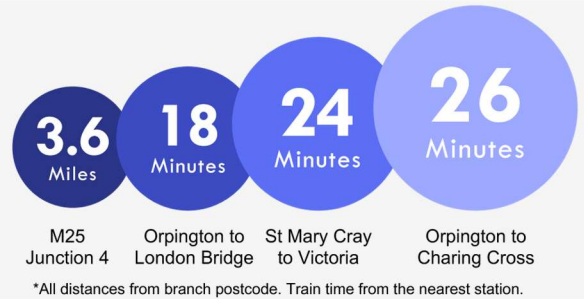
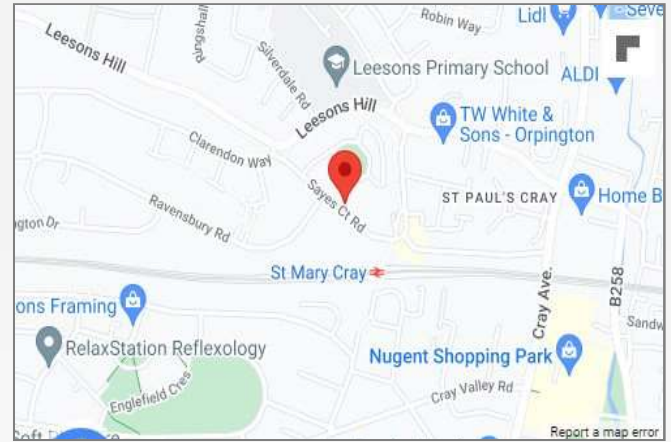
Additional Information

The property is conveniently situated for a range of local amenities including St Mary Cray Station, Nugent Park Shopping Centre, local bus routes and several Schools.

Please note the property is believed to be of a type of concrete construction and we recommend that you check with your mortgage broker or lender that it is suitable for their lending criteria.

Property Location

Sayes Court Road, St Pauls Cray, Kent, BR5 2PG



FOR MORE INFORMATION
CONTACT US TODAY.

01689 833322

Robinson Jackson
292 High Street,
Orpington,
Kent BR6 0NF

orpington@robinson-jackson.com

