

## Alisander Close Snodland ME6 5SH

Leasehold



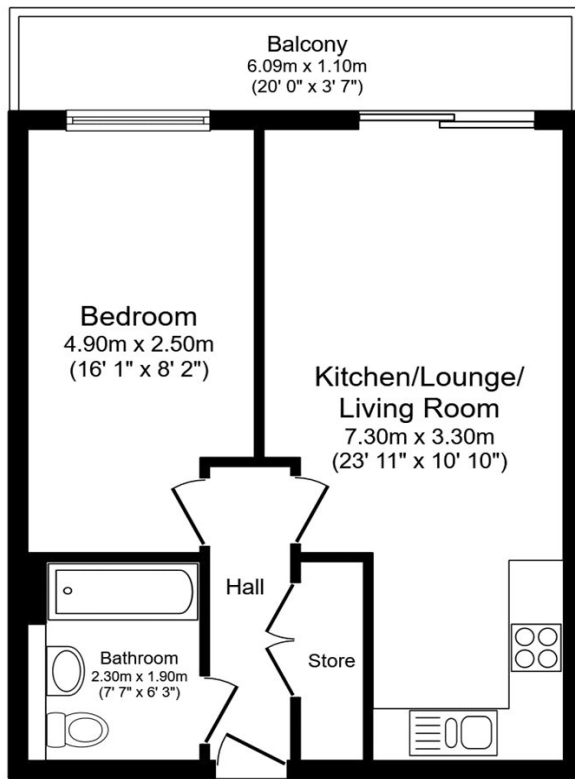
Council Tax: C  
EPC Rating: C

This stunning one bedroom ground floor apartment in the sought after Holborough Lakes, with balcony looking over communal gardens and allocated parking. Call now to view

- Sought after location
- Ground floor
- Balcony
- Allocated parking
- Easy access to A2/M2

**Guide Price £190,000- £210,000**

**ROBINSON MICHAEL & JACKSON**  
Our service will *move* you



**FOR MORE INFORMATION  
CONTACT US TODAY.**

01634 722777

Robinson Michael & Jackson  
109 High Street  
Strood,  
Kent ME2 4TJ

strood@robinson-jackson.com



**Total floor area 43.1 sq.m. (464 sq.ft.) approx**

This floor plan is for illustrative purposes only. It is not drawn to scale. Any measurements, floor areas (including any total floor area), openings and orientation are approximate. No details are guaranteed, they cannot be relied upon for any purpose and they do not form part of any agreement. No liability is taken for any error, omission or misstatement. A party must rely upon its own inspection(s).  
Plan produced for Your Move. Powered by www.focalagent.com

## Interior

**Hall** 3.43m x 1.02m (11'3" x 3'4") Laminate flooring, double glazed door, stair case

**Kitchen** 7.14m x 1.9m (23'5" x 6'3") Laminate flooring, wall to base units, stainless steel oven, hob, oven with extractor fan, sink drainer with one tap, space for appliances.

**Bedroom One** 4.9m x 2.5m (16'1" x 8'2") Laminate flooring, double glazed window to rear.

**Bathroom** 2.26m x 1.9m (7'5" x 6'3") Tiled flooring, low level w/c, panelled bath with one tap, wall mounted shower, partly tiled walls.

## Leasehold Information

Time remaining on lease: Approx. 106 years

Ground Rent: £250 PA

Service Charge: £1161.50 PA

## Additional Information

Snodland is a town in the borough of Tonbridge and Malling in Kent, England. It lies on the River Medway, between Rochester and Maidstone, and approximately 27 miles from central London. Snodland has a small high street which is within walking distance to the local school which is Holmesdale Technology College. Close Motorways links include A228 and the M20.

## Key facts for buyers

