



Flat 4 | Burton House, Chulsa Road, SE26 6BT



£360,000

Leasehold

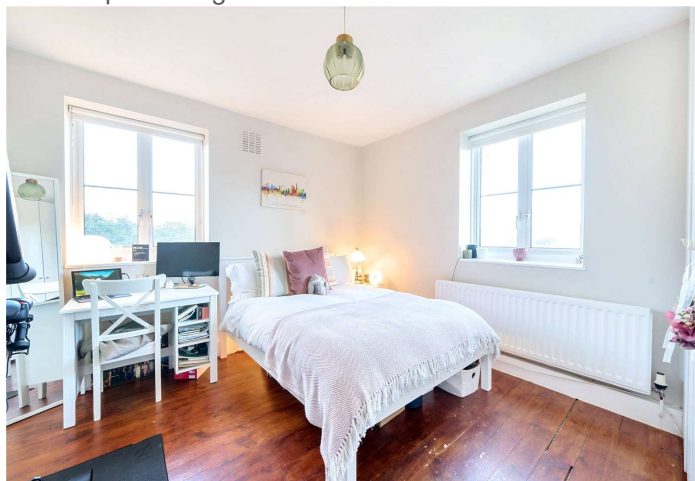
**ROBINSON-JACKSON**  
Our service will *move* you

## Flat 4, Burton House

Fantastic modern purpose built flat offered chain free with two double bedrooms, leasehold, residents parking, double glazing, wood flooring, ample storage and entry phone set within a highly desirable location on the popular Lawrie Park Triangle, excellently located for Sydenham Station, conveniently located for local independent shops, eateries and bars and minutes' walk for the desirable Crystal Palace Park

### Property Features

- Council Tax: B
- EPC Rating: C
- Two Double Bedrooms
- Modern Purpose Built Flat
- Chain Free
- Leasehold
- Residents Parking
- Double Glazing
- Wood Flooring Where Stated
- Ample Storage



## Interior

**Entrance Hall** Built in cupboard with washing machine plumbed for, tiled flooring, radiator

**Lounge** Double glazed window to side and rear, plantation shutters, wood flooring, radiator

**Kitchen** Double glazed window to side, range of base and wall units, work surface, butler sink, integrated oven, stainless steel hob and extractor, space for fridge/freezer, dishwasher plumbed for, tiled flooring

**Master Bedroom** Double glazed window to side and rear, built in wardrobe, wood flooring, radiator

**Bedroom Two** Double glazed window to side, built in cupboard, wood flooring, radiator

**Bathroom** Double glazed window to side, panelled bath, wash hand basin, in vanity unit, low flush WC, tiled flooring, heated towel rail

## Exterior

Residents parking

## Additional Information

Double glazing

Central heating

Wood flooring where stated

Ample storage

Entry phone

Chain free

Leasehold

Situated in the popular Lawrie Park Triangle

Excellent location for Sydenham Station

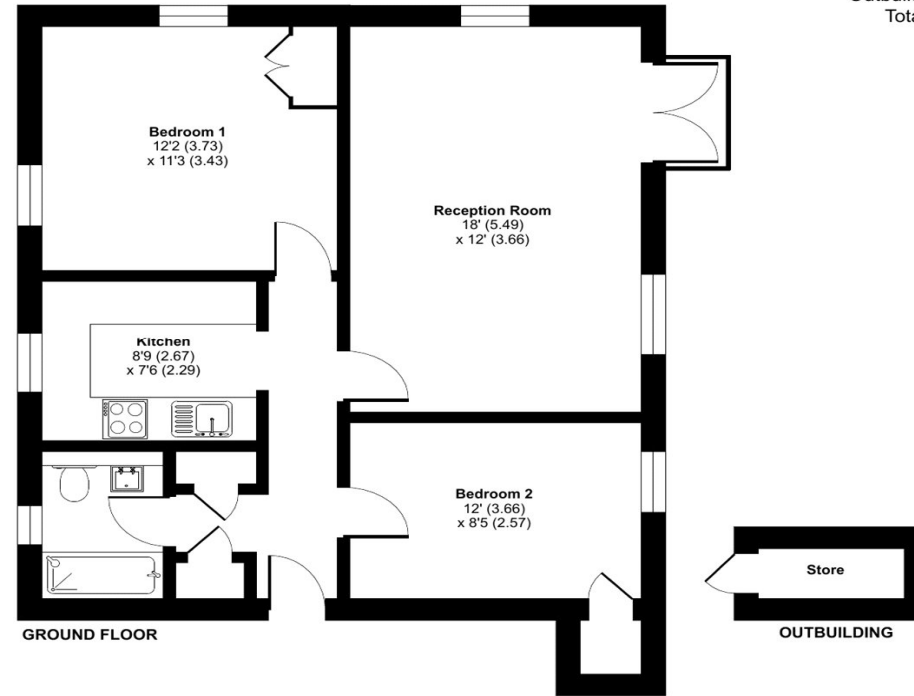
Conveniently located for local independent shops, eateries and bars and Crystal Palace Park

## Burton House, Chulsa Road, London, SE26

Approximate Area = 666 sq ft / 61.9 sq m

Outbuilding = 14 sq ft / 1.3 sq m

Total = 680 sq ft / 63.2 sq m



Floor plan produced in accordance with RICS Property Measurement Standards incorporating International Property Measurement Standards (IPMS2 Residential). © nichecom 2023.





## Property Location

Flat 4, Burton House, Chulsa Road, SE26 6BT



**FOR MORE INFORMATION  
CONTACT US TODAY.**

020 8776 6660  
Robinson Jackson  
256 Kirkdale,  
Sydenham,  
London SE26 4NL  
[sydenham@robinson-jackson.com](mailto:sydenham@robinson-jackson.com)

