



Commissioners Court, New Stairs | Chatham, Kent, ME4 4HQ

 2  2  1

Asking Price £220,000 Leasehold

ROBINSON MICHAEL & JACKSON
Our service will *move* you

New Stairs, Chatham

Welcome to this charming upper-floor flat in this exclusive gated development, perfectly situated in close proximity to the train station. This flat boasts spacious double bedrooms, offering a retreat of comfort and tranquility. The main bedroom is complemented by a stylish ensuite for added convenience.

Step into the heart of modern living with a newly fitted kitchen, providing both aesthetics and functionality. Enjoy the ease of having your own allocated parking space, ensuring a stress-free return home.

Discover the perfect blend of security, accessibility, and contemporary living in this exceptional property. Embrace the lifestyle you deserve, where every detail has been considered for your comfort and convenience.



Property Features

- Council Tax: C
- EPC Rating: C
- Gated development
- Close to train station
- Double bedrooms
- Ensuite to Main Bedroom
- Modern fitted kitchen
- Allocated Parking Space

Interior

Living Room 5.18m x 3.96m (17' x 13')

Kitchen 3.66m x 1.52m (12' x 5')

Bedroom 3.07m x 2.74m (10'1" x 9')

Bathroom 1.85m x 1.52m (6'1" x 5')

Bedroom 3.66m x 2.44m (12' x 8')

Ensuite Bathroom 1.52m x 1.55m (5' x 5'1")

Exterior

Allocated Parking Space

Gated Entrance

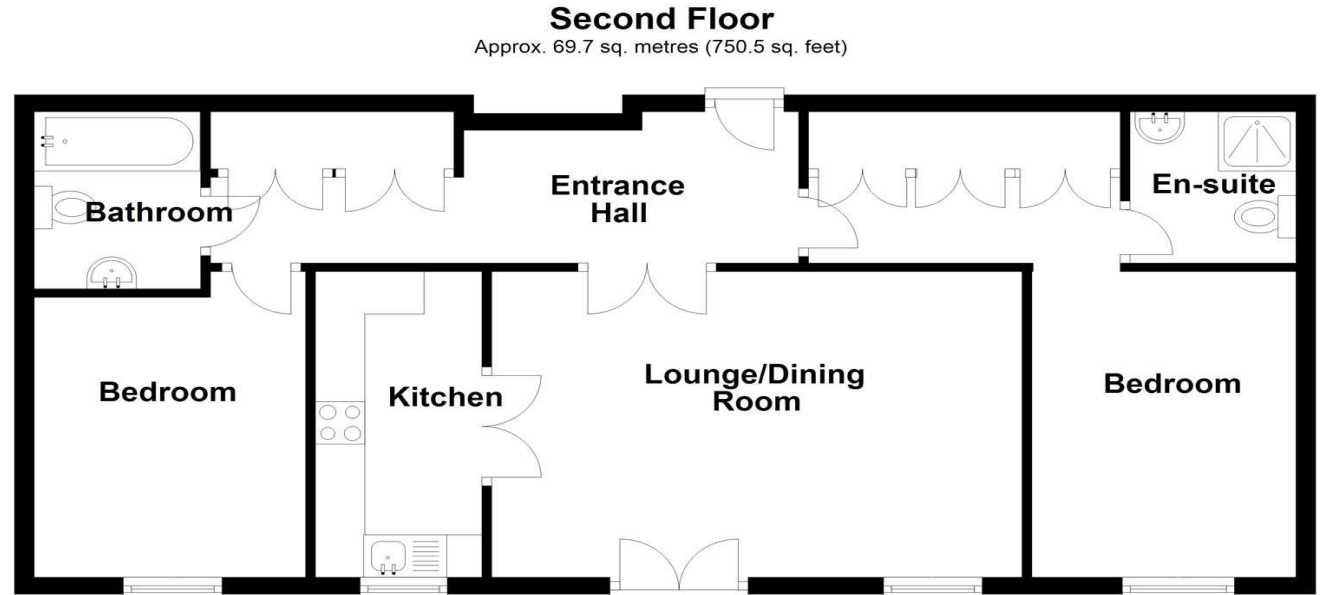
Leasehold Information

Time remaining on lease: Approx. 996 years and 11 months

Ground Rent: £25 Per Annum

Service Charge: £1,320 Per Annum

Ground Rent Review Date:



Total area: approx. 69.7 sq. metres (750.5 sq. feet)

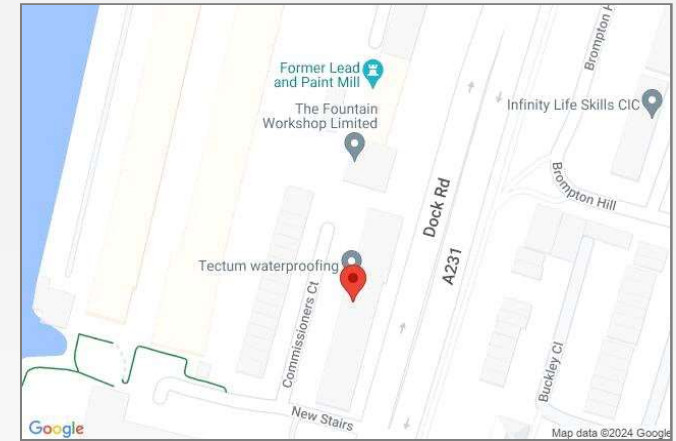
Please be advised this plan is offered for marketing purposes only. It can not be relied upon for exact or precise measurements, angles, window or door openings. Whilst every effort is made to ensure the accuracy the company or provider accepts no responsibility for the content.
Plan produced using PlanUp.





Property Location

New Stairs, Chatham, Kent, ME4 4HQ



*All distances from branch postcode. Train time from nearest station.

Additional Information

Chatham is famous for its Naval connection's, hosting one of the Royal Navy's main facilities for hundreds of years until it's closure in 1984. Since the closure the former site, now known as St Mary's Island, has been transformed and boasts a new retail outlet centre, bars, cafe's, restaurants, gym and cinema to compliment the harbour and vast array of riverside housing. Part of the original naval history has also been preserved through the Historic Dockyard Trust, which provides an insight into past traditions. The Pentagon shopping centre and high

street offer everything that you will need with a wide range of stores. Chatham is a commuter's dream. High Speed rail links to Stratford International in just over 30 minutes or St Pancras International in just over 38 minutes. London Victoria is also accessible in just over 52 minutes. Trips to the continent are also within easy reach via the Eurostar, which departs from nearby Ebbsfleet. In any part of the town you are never too far from road links, the A2 and M2 are easily accessible in under 5 miles. With the M20 and M25 approximately 10 miles away. Chatham and near-by Rochester offer a fantastic range of primary and secondary schools, as well as the University.

**FOR MORE INFORMATION
CONTACT US TODAY.**

01634 880888
Robinson Michael & Jackson
22b Military Road,
Chatham,
Kent, ME4 4JA
chatham@robinson-jackson.com



These particulars do not form part of an offer or contract and must not be relied upon as statements or representation of fact. Any areas, measurements, journey times or distances are approximate. The text, images, photographs and plans are for guidance only and are not necessarily comprehensive. It should not be assumed that the property has all necessary planning, building regulation or other consents and we have not tested any services, equipment or facilities. References to tenure are based on information supplied by the seller. Buyer should verify all information themselves by inspection or otherwise prior to a legal commitment to purchase. Photos and images are subject to copyright.