



Crystal Palace Park Road | Sydenham, London, SE26 6UP



Guide Price £350,000-£375,000

Share of Freehold

ROBINSON-JACKSON
Our service will *move* you

Crystal Palace Park Road, Sydenham

Located in a beautiful detached period building is this ground floor conversion maisonette offered chain free with one double bedroom, 18' open plan Lounge/Kitchen, share of freehold, direct access to secluded communal garden, original features and ample storage set within a highly desirable location, ideal for Sydenham, Crystal Palace and Penge West stations, conveniently located for Crystal Palace triangle and Crystal Palace Park

Property Features

- Council Tax: B
- EPC Rating: D
- One Double Bedroom
- Period Conversion Maisonette
- Chain Free



Interior

Entrance Hall Part opaque double glazed entrance door, tiled flooring with underfloor heating, spotlights.

Lounge/Kitchen Lounge: Glazed bay window to rear overlooking communal garden, laminate flooring with underfloor heating, shelving and storage in alcoves, feature fireplace, picture rail. Kitchen: range of wall and base units with beech work surface over, one bowl ceramic sink with mixer tap, oven, hob and extractor fan to remain, space for fridge/freezer, built in storage cupboard, tiled splash back, laminate flooring with underfloor heating, picture rail.

Bedroom Double glazed window to rear, laminate flooring with underfloor heating, coved ceiling.

Bathroom Opaque double glazed sash window to side, three piece bathroom suite comprising of: freestanding roll top bath with mixer tap, shower attachment and mixer shower over, pedestal wash hand basin with mixer tap and high flush wc, plumbing for washing machine, cupboard housing wall mounted boiler, tiled flooring with underfloor heating, part tiled walls.

Exterior

Communal Garden Mainly laid to lawn with mature shrubs, side access.

Share of Freehold Information

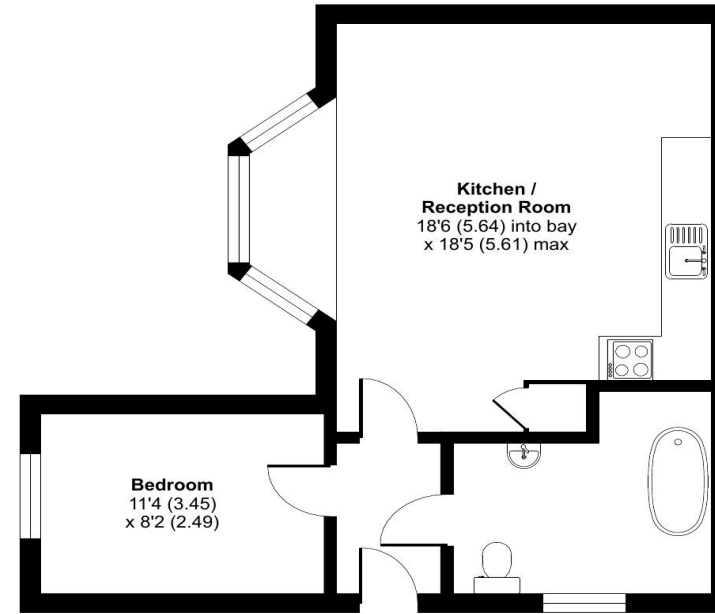
Time remaining on lease: 126 Years remaining

Ground Rent: £90.00 Per annum

Service Charge: £648 Per annum

Approximate Area = 511 sq ft / 47.5 sq m

For identification only - Not to scale



GROUND FLOOR



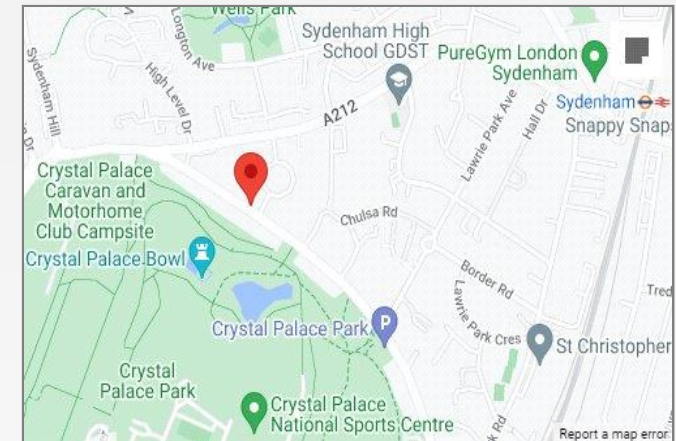
Floor plan produced in accordance with RICS Property Measurement Standards incorporating International Property Measurement Standards (IPMS2 Residential). © nchecon 2023.





Property Location

Crystal Palace Park Road, Sydenham, London, SE26 6UP



Additional Information

One Double Bedroom

Chain Free

Open Plan

Share of Freehold

Ground Floor

Direct Access to Communal Garden

Ample Storage

Original Features

Recently Refurbished

18' Open plan Lounge/Kitchen

Attractive Period Building

Ideal for Sydenham, Crystal Palace and Penge West stations

Conveniently located for Crystal Palace triangle and Crystal Palace Park

**FOR MORE INFORMATION
CONTACT US TODAY.**

020 8776 6660

Robinson Jackson
256 Kirkdale,
Sydenham,
London SE26 4NL

sydenham@robinson-jackson.com



These particulars do not form part of an offer or contract and must not be relied upon as statements or representation of fact. Any areas, measurements, journey times or distances are approximate. The text, images, photographs and plans are for guidance only and are not necessarily comprehensive. It should not be assumed that the property has all necessary planning, building regulation or other consents and we have not tested any services, equipment or facilities. References to tenure are based on information supplied by the seller. Buyer should verify all information themselves by inspection or otherwise prior to a legal commitment to purchase. Photos and images are subject to copyright.