



Blossom Close

Allington | Maidstone | ME16 9QE



Blossom Close

Allington, Maidstone, ME16 9QE

Guide Price £600,000 - £650,000

Freehold

Discover the charm of this four-bedroom detached family home featuring a spacious kitchen/family area.

Nestled at the end of the close, it resides in a sought-after location with excellent schools within walking distance and is just a short distance from Maidstone Hospital. With no forward chain, this home seamlessly combines comfort and convenience.

Benefitting from:

- Four bedroom detached family home
- Family bathroom & two En-suites
- Double garage & driveway
- Landscaped private rear garden
- No forward chain
- Herringbone flooring throughout
- Situated at the end of the Close
- Sought after location with fantastic schools within walking distance
- Council Tax: F
- EPC Rating: B



Accommodation

Entrance Hall Leads into property, stairs going up

Lounge 5m x 3.53m (16'5" x 11'7") Window to the front, double patio doors leading to the garden

Storage cupboard, located under the stairs

Dining Room 2.74m x 3.84m (9' x 12'7") Windows to the front, bay window to the side

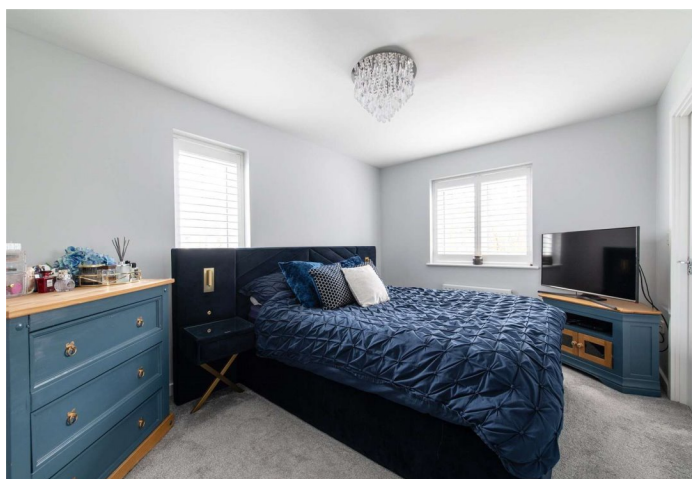
Downstairs WC Basin, under sink cupboard & WC

Kitchen/Family Room Window to the left, bay window to the right, double patio doors leading into the garden, integrated appliances, hob and ovens

Garage Located to the side of the property, electric roller garage door

Bedroom 1 3.96m x 2.92m (13' x 9'7") Windows to the front and the side, benefits from an en-suite, built in wardrobes, double bedroom

En-Suite Window to the front, walk in shower, basin & WC





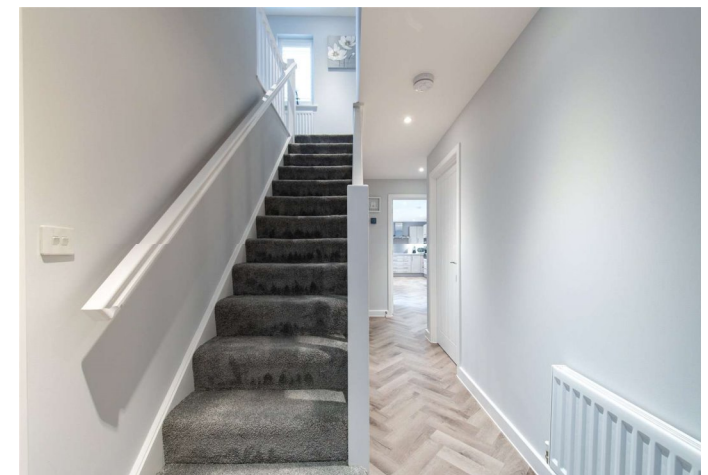
Bedroom 2 Window to the side, benefits from en-suite, double bedroom

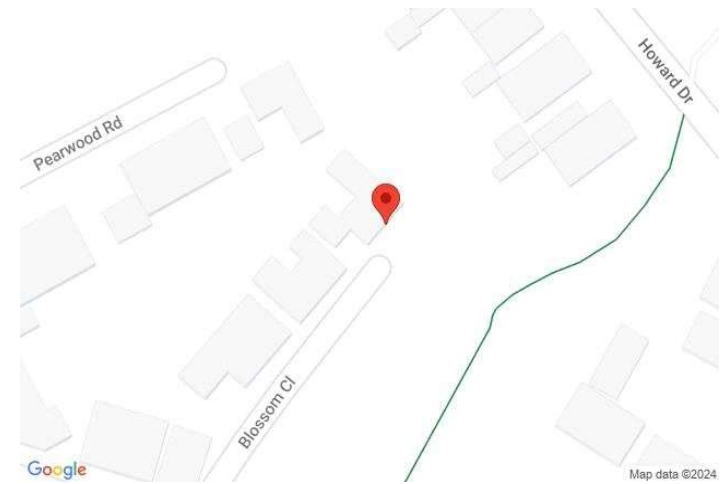
En-Suite Window to the side, walk in shower, basin & WC

Bedroom 3 2.64m x 2.74m (8'8" x 9') Windows to the front, double bedroom

Bedroom 4 2.24m x 2.51m (7'4" x 8'3") Window to the rear

Bathroom 2.03m x 1.96m (6'8" x 6'5") Window to the side, shower over bath, basin & WC





Important Notice

These particulars do not form part of an offer or contract and must not be relied upon as statements or representation of fact. Any areas, measurements, journey times or distances are approximate. The text, images, photographs and plans are for guidance only and are not necessarily comprehensive. It should not be assumed that the property has all necessary planning, building regulation or other consents and we have not tested any services, equipment or facilities. References to tenure are based on information supplied by the seller. Buyer should verify all information themselves by inspection or otherwise prior to a legal commitment to purchase. Photos and images are subject to copyright.

Location



(All distances & times are approximates)

FOR MORE INFORMATION CONTACT US TODAY.

Tj Yardley - Branch Manager

01622 476666

Robinson Michael & Jackson

15A King Street

Maidstone,

Kent ME14 1BA

maidstone@robinson-jackson.com

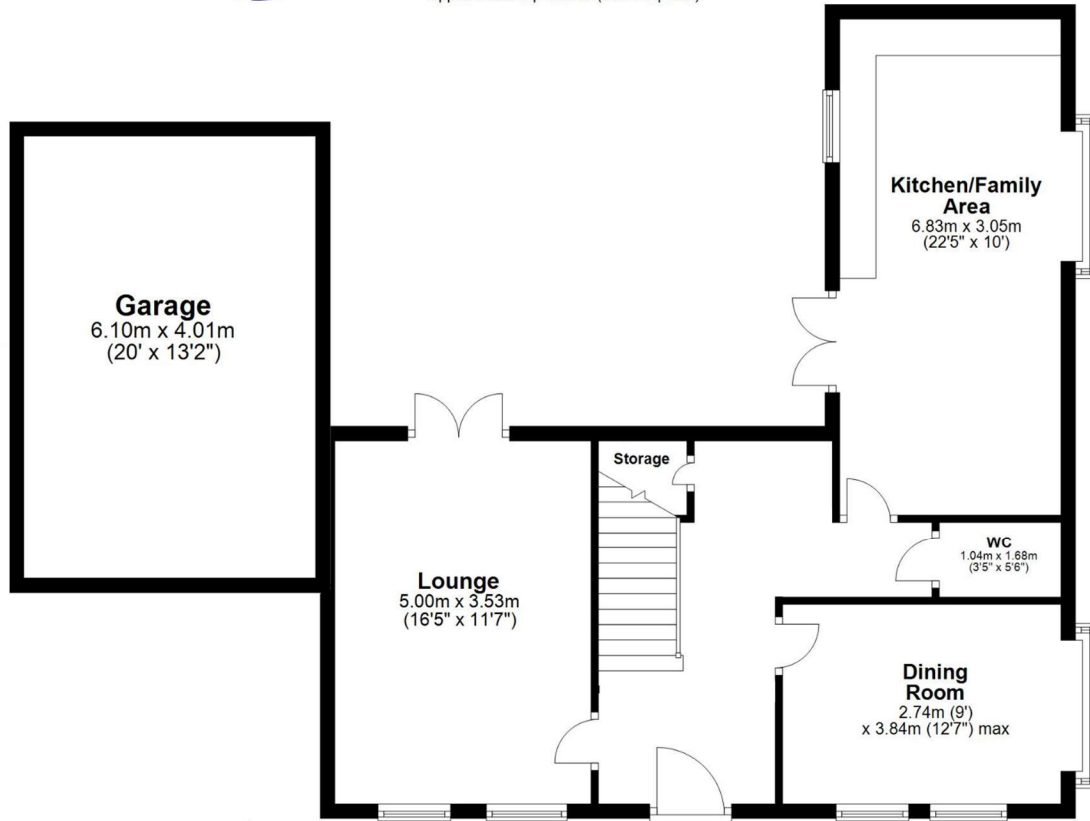
SALES | MORTGAGES | LEGALS

ROBINSON MICHAEL & JACKSON



Ground Floor

Approx. 92.8 sq. metres (998.5 sq. feet)



First Floor

Approx. 66.4 sq. metres (715.0 sq. feet)

