



Sheen Road | Poverest, Kent, BR5 2JB



3



1



2

£300,000 Freehold

ROBINSON-JACKSON
Our service will *move* you

Sheen Road

Poverest

Suitable for CASH BUYERS ONLY due to its non-standard construction is this three bedroom semi-detached house. The property is situated in a popular location close to several amenities.

Property Features

- Central Heating & Double Glazing
- Ground Floor WC
- 17ft Kitchen/Dining Room
- Front Garden
- Approx 80ft Rear Garden
- Close To Amenities
- CASH BUYERS ONLY
- Council Tax: A
- EPC Rating: D



Interior

Entrance Hall: Double glazed composite door to front. Double glazed opaque window to side. Stairs to first floor. Understairs storage with space for tumble dryer. Radiator and fitted carpet.

Lounge: 4.37m x 3.5m (14'4" x 11'6") Double glazed window to front, radiator and wood laminate flooring.

Kitchen/Dining Room: 5.28m x 3.07m (17'4" x 10'1") Fitted with a matching range of wall and base units with work surfaces. Space for cooker, fridge freezer and washing machine. Space for table & chairs. Sink unit & drainer. Double glazed window to rear. Double glazed door opening onto the rear garden.

Lobby Area: With access to a wc. Double glazed door to side.

Landing: Double glazed window to side and fitted carpet.

Bedroom 1: 3.45m x 3.4m (11'4" x 11'2") Double glazed window to front, built in wardrobe, radiator and fitted carpet.

Bedroom 2: 3.56m x 2.77m (11'8" x 9'1") Double glazed window to rear, built in wardrobe, radiator and fitted carpet.

Bedroom 3: 3.56m x 2.77m (11'8" x 9'1") (Maximum dimensions). Double glazed window to front, radiator and fitted carpet.

Family Bathroom: Fitted with a matching three piece suite in white with panelled bath with shower attachment, glass shower screen, wash hand basin set in vanity unit & wc. Chrome heated towel rail. Double glazed opaque window to rear.

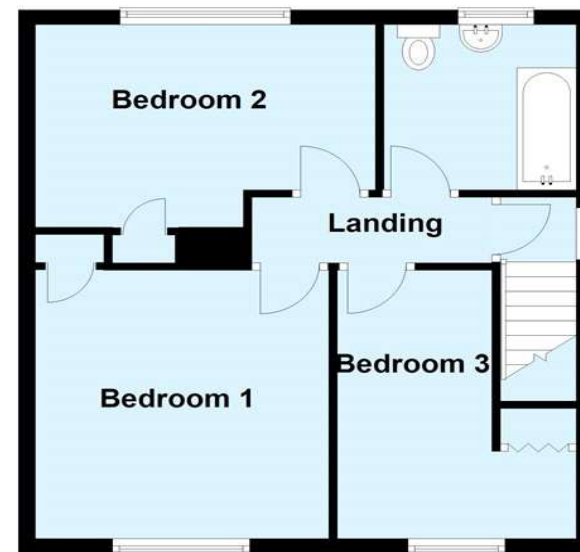
Ground Floor

Approx. 43.3 sq. metres (466.4 sq. feet)



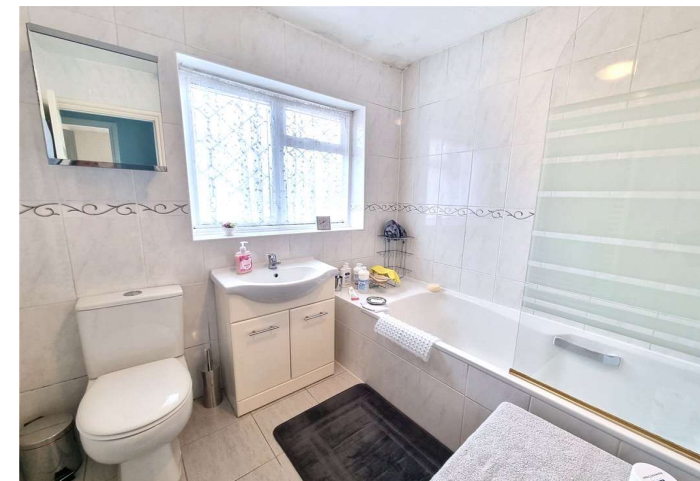
First Floor

Approx. 45.2 sq. metres (486.7 sq. feet)



Total area: approx. 88.5 sq. metres (953.1 sq. feet)

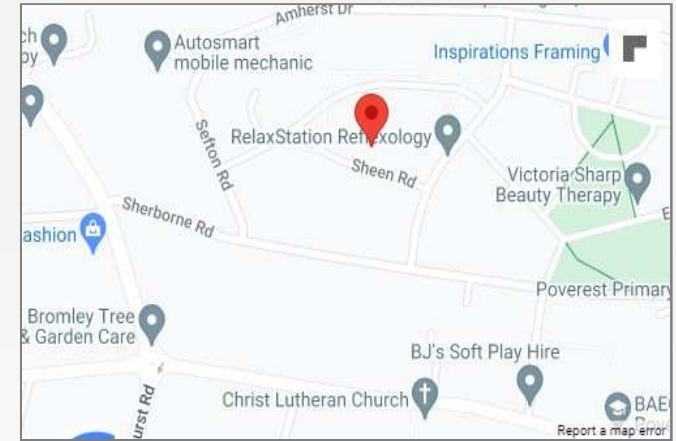
This plan is for general layout guidance and may not be to scale.
Plan produced using PlanUp.





Property Location

Sheen Road, Poverest, Kent, BR5 2JB



Exterior

Front Garden: Laid to lawn with pathway to front.

Rear Garden: Measuring approximately 80ft in length and mainly laid to lawn with various shrubs and trees. Large patio area. Side access.

Additional Information

Sheen Road is situated conveniently for St Mary Cray and Petts Wood Stations alike, local bus routes and various Schools.

FOR MORE INFORMATION CONTACT US TODAY.

01689 833322
 Robinson Jackson
 292 High Street,
 Orpington,
 Kent BR6 0NF
 orpington@robinson-jackson.com