



Princes Road | Fleet Estate, Dartford, DA2 6JG



Guide Price £425,000 to £450,000
Freehold

ROBINSON-JACKSON
Our service will *move* you

Princes Road, Fleet Estate
Having been extended to the rear on the ground floor as well as a double storey extension to the front giving a much bigger third bedroom viewing comes highly recommended of this family home.

Property Features

- Council Tax: D
- EPC Rating: D
- South Facing Garden With Home Office
- Ground Floor Extension Giving A Spacious Kitchen Diner
- Larger Than Average Third Bedroom Due To Front Extension
- Four Piece Bathroom Suite
- Ideally Located For Fleetdown Primary School
- Bluewater, The M25 and A2 Are A Short Distance Away



Interior

Porch: Frosted double glazed entrance door and window unit to front. Double glazed window to side. Covered ceiling. Radiator. Tiled floor. Double doors to living room.

Lounge: Double glazed bay window to front. Coved ceiling. Radiator. Carpeted stairs to first floor. Under stairs cupboard housing gas and electric meters. Feature fireplace with log burner inset. Wood effect flooring.

Kitchen Diner: Double glazed patio doors to garden. Double glazed window to side. Double glazed window to rear. Coved ceiling. Matching range of wall and base units. Complimentary work-surfaces. Plumbing for slimline dishwasher. Plumbing for washing machine. Space for range cooker. Stainless steel cooker hood. Tiled splash backs. Plumbing for American fridge freezer. Two radiators. Tiled floor.

Landing: Double glazed window to side. Access to boarded loft via loft ladder. Coved ceiling. Storage cupboard. Carpet.

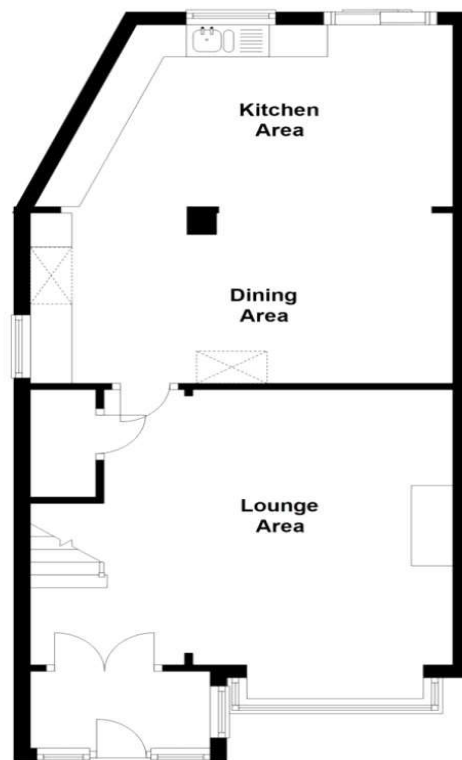
Bedroom One: Double glazed window to front. Coved ceiling. Radiator. Built in wardrobe. Wood effect flooring.

Bedroom Two: Currently used as a walk in wardrobe. Double glazed window to rear. Coved ceiling. Radiator. Wood effect flooring.

Bedroom Three: Double glazed window to front. Radiator. Wood effect flooring.

Bathroom: Two frosted double glazed windows to rear. Spotlights. Coved ceiling. Tiled walls. Tiled floor. Freestanding bath with separate hand held shower. Wash hand basin. Low level WC. Tiled shower cubicle with overhead rainfall shower and four jet sprays.

Ground Floor
Approx. 52.2 sq. metres (562.4 sq. feet)



First Floor
Approx. 38.6 sq. metres (416.7 sq. feet)





Exterior

Rear Garden: South Facing. Approx 18ft. Two patio areas. Artificial lawn. Side pedestrian access. Outside tap. Office / Outbuilding.

Office / Outbuilding: power and light. Bar.

Front Garden: Block paved shared driveway with gate and electric charging point. Shingled front garden with potential for off street parking subject to council approval.

Additional Information

Council Tax Dartford Band D.

The Owners Have Lived In The Property 5 Years.

The Boiler Is Located In The Loft.

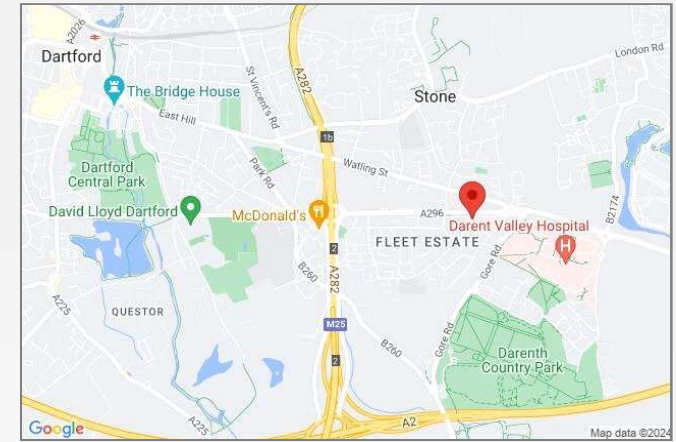
South Facing Garden

The Property Measures 91 Square Metres.

The Owner Is Looking For Another Property.

Property Location

Princes Road, Fleet Estate, Dartford, DA2 6JG



**FOR MORE INFORMATION
CONTACT US TODAY.**

01322 281281

Robinson Jackson
22 Market Street,
Dartford,
Kent DA1 1EZ

dartford@robinson-jackson.com

