



Green Walk | Crayford, Dartford, DA1 4JP



Guide Price £400,000 to £425,000

Freehold

ROBINSON-JACKSON
Our service will *move* you

Green Walk, Crayford

Robinson Jackson are please to offer this extended semi-detached is located for easy access to Crayford town centre and boasts off street parking and pedestrian access to the rear garden.

Property Features

- Council Tax: D
- EPC Rating: D
- Three Bedroom Semi Detached Home
- Zone 6 Location
- Ground Floor Bathroom
- Two Reception Rooms
- Parking to Front
- Landscaped Rear garden



Interior

Entrance Hall 13x1.7m (13x5'7") Double glazed door to front, Dado rail stairs to first floor, understairs storage cupboard, laminate wood flooring.

Lounge 4.45mx2.9m (14'7"x9'6") Double glazed window to front, Coved ceiling, feature gas feature fireplace with stone hearth, radiator, laminate wood flooring.

Dining Room 6.27mx2.92m (20'7"x9'7") Open plan to kitchen, Double glazed doors to garden, Laminate floor, Radiator.

Kitchen 3.38mx2.2m (11'1"x7'3") Double glazed window to rear, A range of fitted wall and base units with complimentary worktops and upstand, Black sink and drainer with instant boiling water mixer tap, Plumbed for washing machine, double oven with induction hob and extractor hood over, integrated dishwasher, integrated fridge freezer, breakfast bar, laminate wood flooring.

Bathroom 10x1.5m (10x4'11") Frosted double glazed window to side, curved Bath with mixer taps and Triton shower above, glass shower screen, low level WC, wall mounted wash hand basin with integrated towel rail, Heated towel radiator, tiled floor and tiled walls.

Landing Double glazed window to side, fitted carpet, Dado rail.

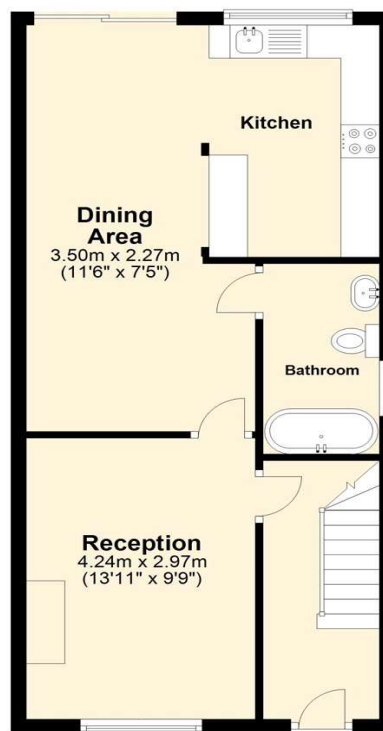
Bedroom One 3.48mx2.8m (11'5"x9'2") Double glazed window to front, exposed brick feature fireplace, radiator, fitted carpet, access to En suite toilet

Ensuite Low level WC with enclosed cistern, vanity mounted wash hand basin, tile effect laminate flooring.

Bedroom Two 3.4mx2.41m (11'2"x7'11") Double glazed window to rear, Dado rail and panelled walls, fitted carpet, loft access.

Bedroom Three 6.73mx2.13m (22'1"x7') Double glazed window to side and rear, Coved ceiling, built in wardrobes with sliding glass doors fitted carpet.

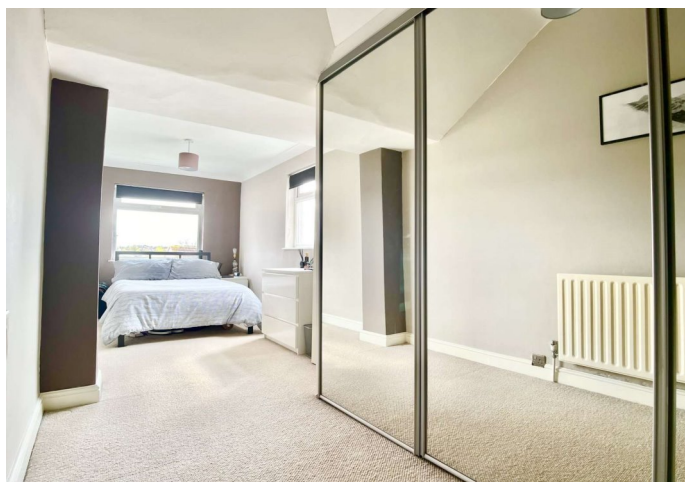
Ground Floor
Approx. 48.0 sq. metres (516.2 sq. feet)



First Floor
Approx. 39.0 sq. metres (419.8 sq. feet)



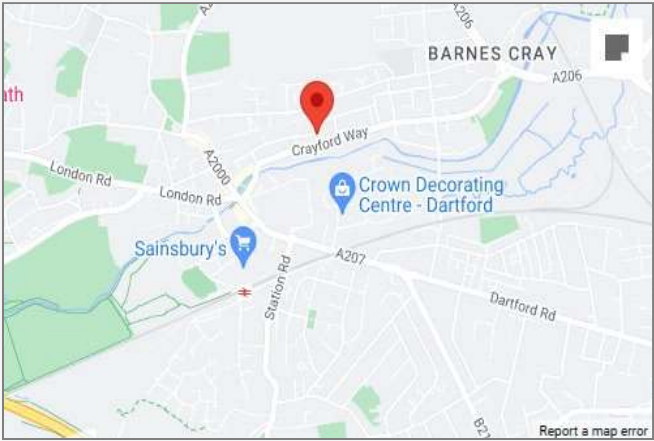
Total area: approx. 87.0 sq. metres (936.0 sq. feet)





Property Location

Green Walk, Crayford, Dartford, DA1 4JP



Additional Information

- Gas meter at the front of property
- Electric meter in cupboard under the stairs
- Boiler in the storage cupboard in the second bedroom
- The loft has a loft ladder and is boarded for storage
- The property measures 87 sq meters

Exterior

- Front Garden: Off street parking for two vehicles, pedestrian side access to rear garden
- Rear Garden: Low maintenance garden with artificial grass and timber deck area, timber storage shed with power and lighting

**FOR MORE INFORMATION
CONTACT US TODAY.**

01322 281281
Robinson Jackson
22 Market Street,
Dartford,
Kent DA1 1EZ
dartford@robinson-jackson.com



These particulars do not form part of an offer or contract and must not be relied upon as statements or representation of fact. Any areas, measurements, journey times or distances are approximate. The text, images, photographs and plans are for guidance only and are not necessarily comprehensive. It should not be assumed that the property has all necessary planning, building regulation or other consents and we have not tested any services, equipment or facilities. References to tenure are based on information supplied by the seller. Buyer should verify all information themselves by inspection or otherwise prior to a legal commitment to purchase. Photos and images are subject to copyright.