



Beacon Drive | Bean, Dartford, DA2 8BG

 5  3  1 Asking Price: £465,000 Freehold

ROBINSON-JACKSON
Our service will *move* you

Beacon Drive, Bean

Robinson Jackson proudly offers this charming four/five-bedroom family residence, spanning three floors and nestled in the tranquil semi-rural location of Bean. Conveniently located just a stone's throw away from the bustling Bluewater shopping centre, with easy access to the A2 motorway, Ebbsfleet International station and in close proximity to Bean Primary School, this property epitomizes both convenience and comfort. Boasting an integral garage and driveway, this home seamlessly blends practicality with style. The spacious open-plan living room lends itself perfectly to both family gatherings and hosting guests, providing a versatile space for everyday living and entertaining alike.

Furthermore, the property features a ground floor shower room in addition to the first-floor bathroom and an ensuite to the master bedroom, ensuring utmost convenience and comfort for all occupants. Discover the perfect blend of modern amenities and family-friendly living in this delightful Bean residence.

Property Features

- Open plan living/dining area
- Modern fitted kitchen with Quartz work surfaces
- Four/Five bedrooms
- First floor bathroom & ground floor shower room
- Ensuite to principle bedroom
- Garage and driveway



Interior

Entrance Hall/Utility Space: Fitted storage cupboards with space and plumbing for white goods such as fridge freezer, washing machine etc. Tiled flooring.

Cloakroom: Low level WC. Wash hand basin. Double shower cubicle. Radiator. Fully tiled walls and flooring.

Lounge/Dining Room: 5.3m x 3.25m (17'5" x 10'8") Two double glazed windows to rear. Double glazed sliding patio door to rear garden. Two radiators. Amtico flooring.

Dining Area: Double glazed window to side. Understairs storage cupboard. Carpeted stairs to first floor.

Kitchen: 2.64m x 2.54m (8'8" x 8'4") Double glazed window to front. Range of matching wall and base units with complimentary Quartz worktop and cutaway sink. Integrated electric oven, microwave, induction hob and extractor. Integrated fridge freezer. Integrated dishwasher. Spotlights. Amtico flooring.

First Floor:

Bedroom One: 5.3m x 3.25m (17'5" x 10'8") Two double glazed windows to rear. Fitted wardrobes and overhead storage cabinets. Radiator. Carpet.

Ensuite: Low level WC. Wash hand basin. Shower cubicle. Part tiled walls. Vinyl flooring.

Bedroom Four: 2.77m x 2.6m (9'1" x 8'6") Double glazed window to front. Built in wardrobes. Radiator. Laminate flooring.

Bathroom: Double glazed frosted window to side. Low level WC. Floating wash hand basin with vanity storage. Panelled bath with fitted shower and shower screen. Heated towel rail. Part tiled walls. Wood flooring.

Second Floor:

Bedroom Two: 5.4m x 2.77m (17'9" x 9'1") Double glazed Dormer window to rear. Eaves storage. Radiator. Carpet.

Bedroom Three: 4.32m x 2.41m (14'2" x 7'11") Double glazed window to front. Radiator. Carpet.

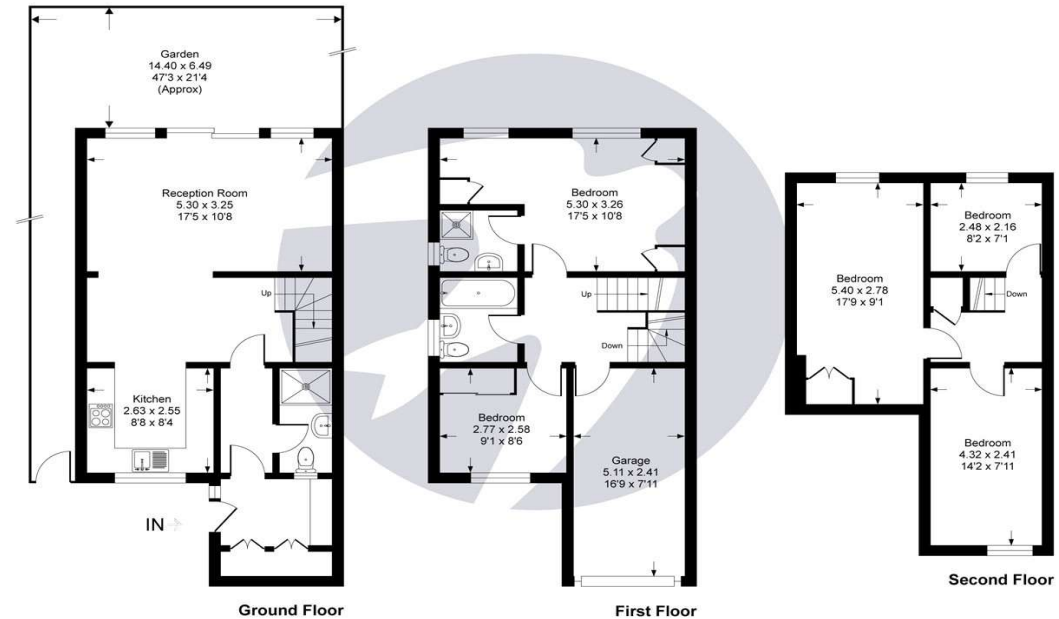
Study/Bedroom Five: 2.5m x 2.16m (8'2" x 7'1") Double glazed Dormer window to rear. Eaves storage. Laminate flooring.

Beacon Drive, DA2

Approximate Gross Internal Area = 123 sq m / 1319 sq ft

Approximate Garage Internal Area = 12 sq m / 131 sq ft

Approximate Total Internal Area = 135 sq m / 1450 sq ft



**ROBINSON
JACKSON**

This plan is for layout guidance only. Not drawn to scale unless stated. Windows and door openings are approximate. Whilst every care is taken in the preparation of this plan, please check all dimensions, shapes and compass bearings before making any decisions reliant upon them.
Produced by Planpix





Exterior

Rear Garden: Approximately 47ft x 21ft.

Tiered garden. Patio area. Artificial lawn.

Shared driveway.

Garage: 16'9 x 7'11

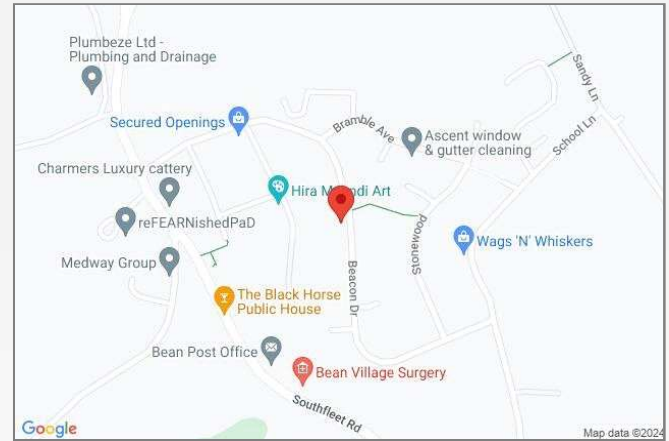
Additional Information

Dartford Borough Council - Tax Band E

Total floor area: 131 sq. metres

Property Location

Beacon Drive, Bean, Dartford, DA2 8BG



*All distances from branch postcode. Train time from nearest station.

**FOR MORE INFORMATION
CONTACT US TODAY.**

01322 624440

Robinson Jackson
39 High Street,
Swanscombe
Kent,
DA10 0AG

swanscombe@robinson-jackson.com

