



Barming Walk | Barming, Kent, ME16 9AH



Guide Price £400,000 - £425,000

Freehold

ROBINSON MICHAEL & JACKSON
Our service will *move* you

Barming Walk, Barming

GUIDE PRICE £400,000 - £425,000

This exceptionally spacious and well-presented four-bedroom townhouse boasts a convenient location within walking distance of essential amenities.

Property Features

- Council Tax: D
- EPC Rating: B
- Modern town house
- Boasting Four generous sized bedrooms
- Two allocated parking bays
- Family bathroom, En-suite & separate W/C
- Close proximity to Maidstone hospital & Barming station
- Solar Panels
- Within catchment to fantastic primary schools
- Sought after Barming location



Interior

Entrance Hall Leads into property, stairs going up

Kitchen/Diner 4.93m x 3.2m (16'2" x 10'6") Squared bay window to the front, open planned kitchen/diner, integrated appliances

WC Basin & WC

Lounge 4.5m x 3.4m (14'9" x 11'2") Double doors leading into the garden, spacious room

Understairs Cupboard Storage cupboard

Bedroom 1 4.5m x 2.87m (14'9" x 9'5") Window to the rear, double bedroom, built in wardrobe, benefits from en-suite, located on first floor

En-Suite 2.26m x 1.37m (7'5" x 4'6") Walk in shower, basin & WC

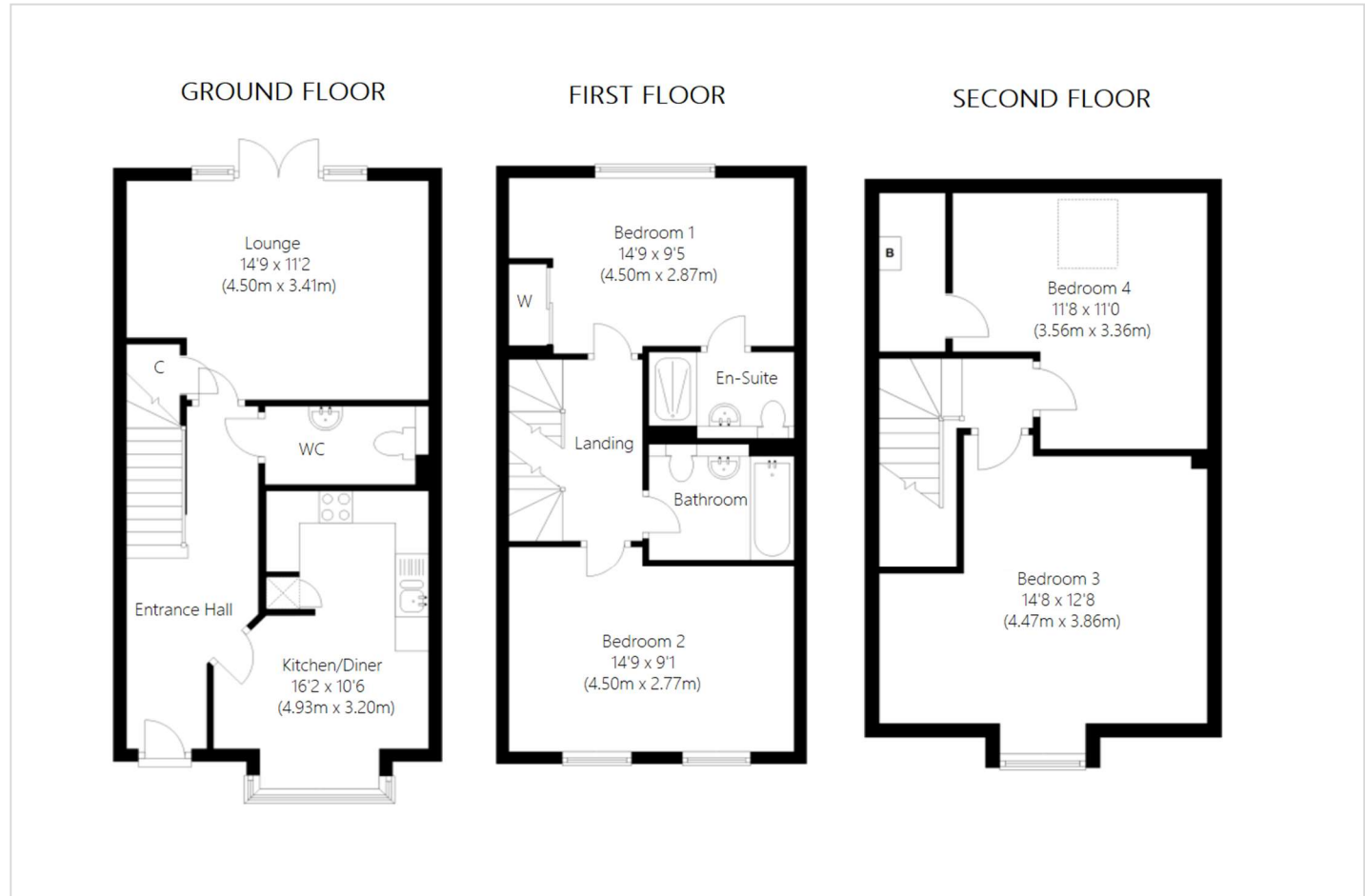
Bedroom 2 4.5m x 2.77m (14'9" x 9'1") Windows to the front, double bedroom, located on the first floor

Bathroom 2.26m x 1.9m (7'5" x 6'3") Shower over bath, basin & WC, located on first floor

Bedroom 3 4.47m x 3.86m (14'8" x 12'8") Squared window to the front, double bedroom, located on the second floor

Bedroom 4 3.56m x 3.35m (11'8" x 11') Velux window, cupboard, double bedroom, located on the second floor

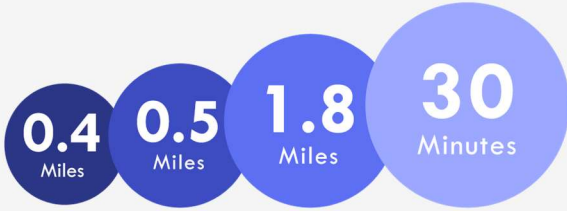
Family Bathroom 2.26m x 1.9m (7'5" x 6'3")





Property Location

Barming Walk, Barming, Kent, ME16 9AH



Maidstone East Train Station Maidstone West Train Station M20 Junction 7 Bluewater

*All distances from branch postcode. Train time from nearest station.

**FOR MORE INFORMATION
CONTACT US TODAY.**

01622 476666
Robinson Michael & Jackson
15A King Street
Maidstone,
Kent ME14 1BA
maidstone@robinson-jackson.com



These particulars do not form part of an offer or contract and must not be relied upon as statements or representation of fact. Any areas, measurements, journey times or distances are approximate. The text, images, photographs and plans are for guidance only and are not necessarily comprehensive. It should not be assumed that the property has all necessary planning, building regulation or other consents and we have not tested any services, equipment or facilities. References to tenure are based on information supplied by the seller. Buyer should verify all information themselves by inspection or otherwise prior to a legal commitment to purchase. Photos and images are subject to copyright.