



Tatler Close | Lordswood, Kent, ME5 8XH



Guide Price £290,000 to £300,000

Freehold

ROBINSON MICHAEL & JACKSON
Our service will *move* you

Tatler Close, Lordswood

A beautifully presented family home in a popular part of Lordswood with a garage and parking space to the rear. Must be viewed to fully appreciate all it offers.

Property Features

- Council Tax: C
- EPC Rating: C
- 3 Bedroom House
- Open Plan Ground Floor
- Garage & Parking Space to Rear
- Modern Fitted Kitchen & Bathroom
- Beautifully Presented Throughout
- Must Be Viewed



Interior

Front Door To:

Lounge/Diner/Kitchen: 7.37 (24'2")m x 3.68 (12'1")m x 4.67 (15'4")m Open Plan

First Floor Landing:

Bedroom 1: 4.1m x 2.77m (13'5" x 9'1")

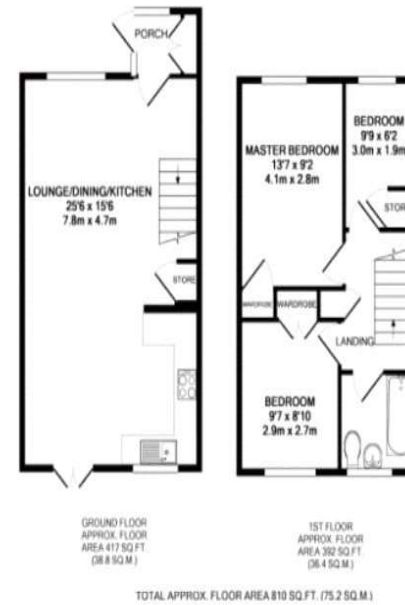
Bedroom 2: 2.9m x 2.67m (9'6" x 8'9")

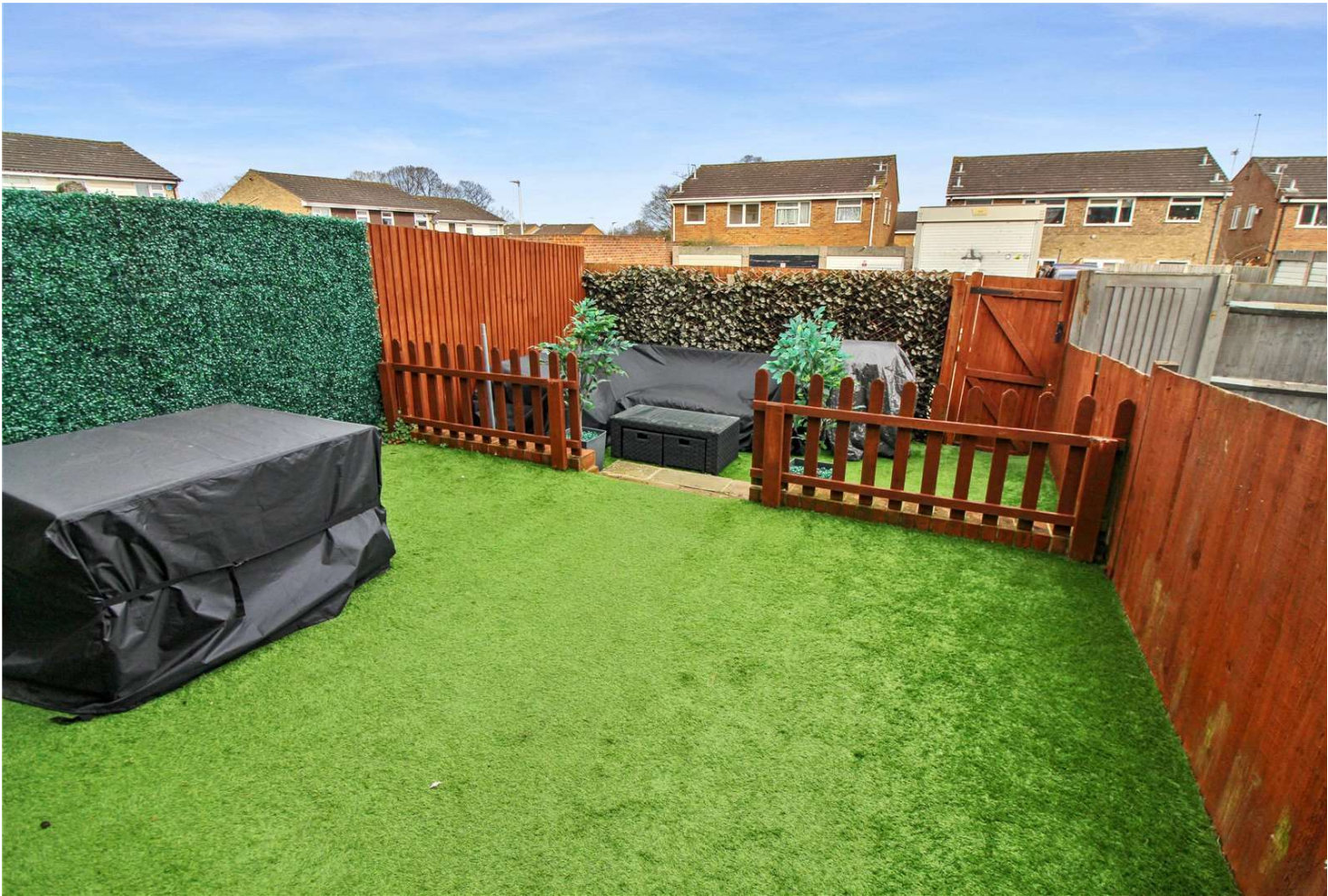
Bedroom 3: 2.95m x 1.88m (9'8" x 6'2")

Bathroom: 1.96m x 1.83m (6'5" x 6')

Exterior

Rear Garden: Two tiers, artificial grass.





Property Location

Tatler Close, Lordswood, Kent, ME5 8XH



*All distances from the ME5 8EH postcode . Train time from Maidstone East station.

FOR MORE INFORMATION CONTACT US TODAY.

01634 868000
Robinson Michael & Jackson
381 Walderslade Road,
Walderslade,
Kent ME5 9LL
walderslade@robinson-jackson.com



These particulars do not form part of an offer or contract and must not be relied upon as statements or representation of fact. Any areas, measurements, journey times or distances are approximate. The text, images, photographs and plans are for guidance only and are not necessarily comprehensive. It should not be assumed that the property has all necessary planning, building regulation or other consents and we have not tested any services, equipment or facilities. References to tenure are based on information supplied by the seller. Buyer should verify all information themselves by inspection or otherwise prior to a legal commitment to purchase. Photos and images are subject to copyright.