

Hughenden Reach Maidstone ME15 6RZ

Leasehold



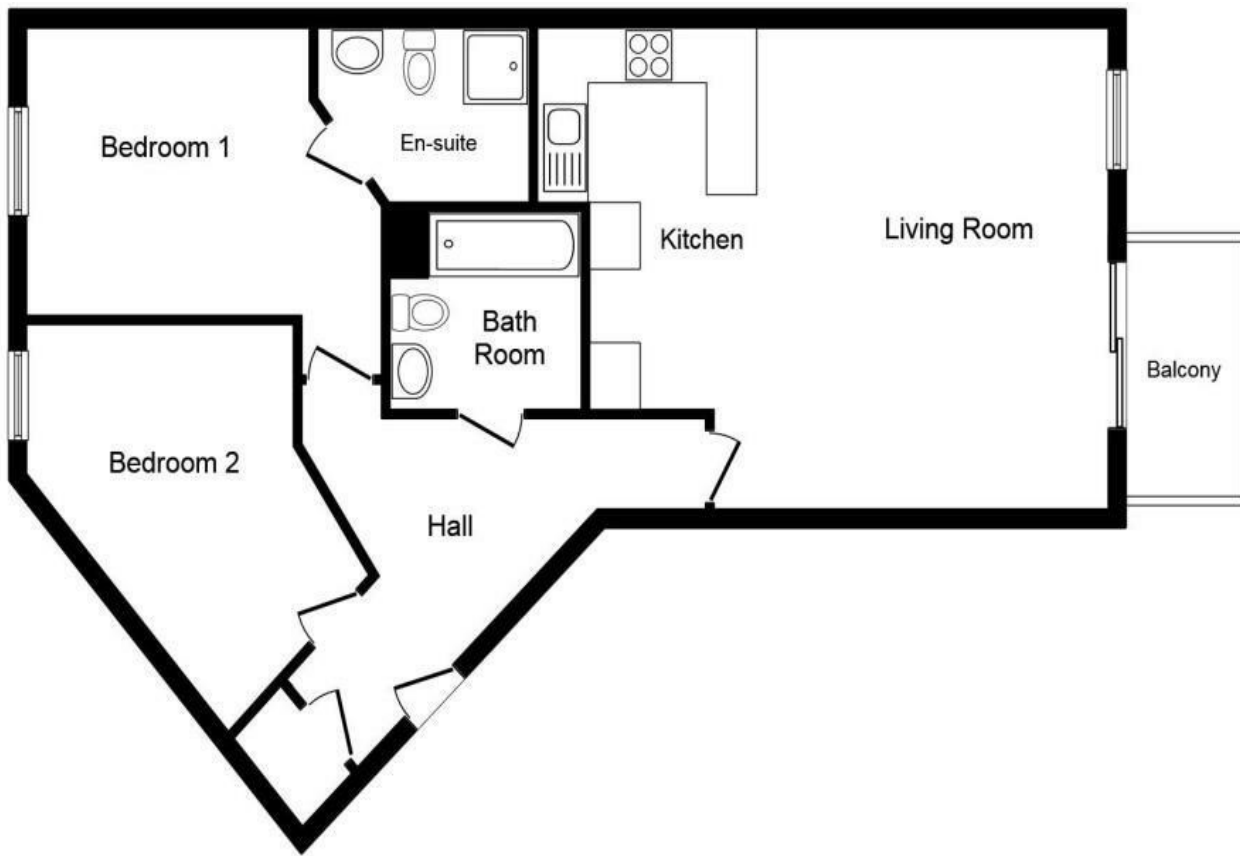
Council Tax:
EPC Rating: C

River Views | 25% Share | Generous Living Space Throughout | Allocated Secure Parking | Two Double Bedrooms | Two Bathrooms | Open Plan

- 25% Share (Full market value £240,000)
- Allocated secure parking
- River views
- Balcony
- Over 700SQFT!

Asking Price £60,000

ROBINSON MICHAEL & JACKSON
Our service will *move* you



**FOR MORE INFORMATION
CONTACT US TODAY.**

01622 476666
 Robinson Michael & Jackson
 15A King Street
 Maidstone,
 Kent ME14 1BA
 maidstone@robinson-jackson.com



Interior

Living Room Open planned with the kitchen, double doors leading out to the balcony

Kitchen Integrated appliances, open planned with the lounge

Bedroom 1 Window to the rear, double bedroom, benefits from en-suite

Bedroom 2 Window to the rear, double bedroom

Bathroom Shower over bath, heated towel rail, basin & WC

En-Suite Walk in shower, basin & WC

Leasehold Information

Time remaining on lease: TBC

Ground Rent: None

Service Charge: £206PCM

Ground Rent Review Date: N/A

Exterior

Balcony