



Grove Road
Maidstone
ME15 9AU
Freehold

This three bedroom mid terrace property in need of work throughout. Benefitting from off street parking, three bedrooms and a generous size rear garden.

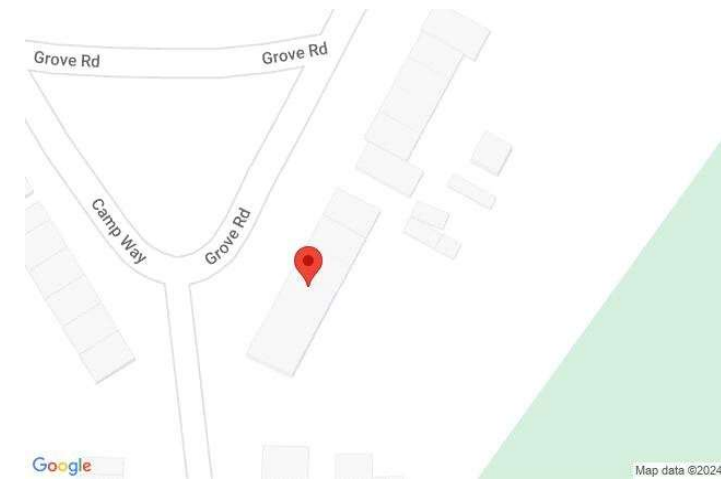
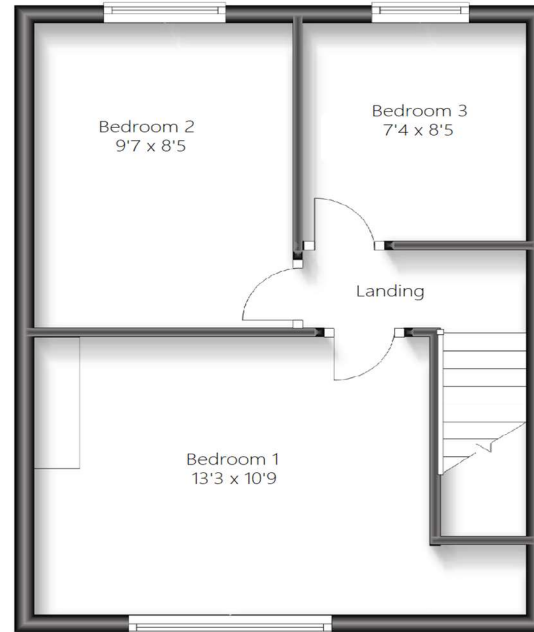
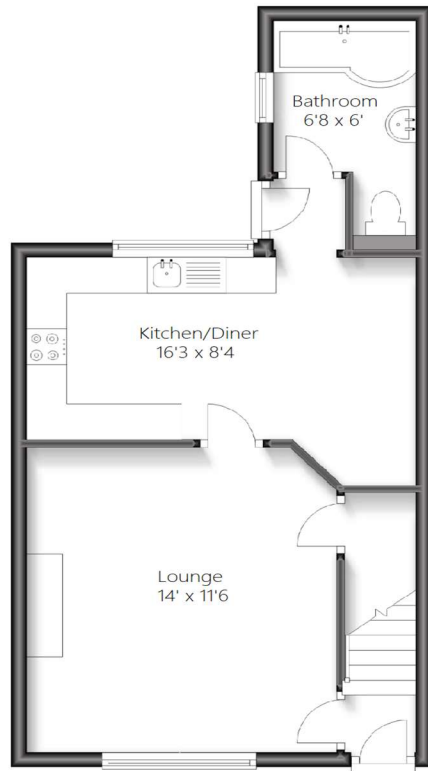
- Three bedrooms
- Off street parking
- Generous size rear garden
- No chain
- In need of work throughout



Council Tax: B
EPC Rating: TBC

Offers Over £220,000

ROBINSON MICHAEL & JACKSON
Our service will *move* you



**FOR MORE INFORMATION
CONTACT US TODAY.**

01622 476666
 Robinson Michael & Jackson
 15A King Street
 Maidstone,
 Kent ME14 1BA
 maidstone@robinson-jackson.com



Interior

Lounge 4.27m x 3.5m (14' x 11'6") Window to the front, fireplace

Kitchen/Dining Room 4.95m x 2.54m (16'3" x 8'4") Open planned kitchen/dining room, window to the rear

Bathroom 2.03m x 1.83m (6'8" x 6") Window to the side, shower over bath, heated towel rail, basin & WC

Bedroom 1 4.04m x 3.28m (13'3" x 10'9") Window to the front, double bedroom

Bedroom 2 2.92m x 2.57m (9'7" x 8'5") Window to the rear, double bedroom

Bedroom 3 2.24m x 2.57m (7'4" x 8'5") Window to the rear