



Wickham Street | Welling, Kent, DA16 3BS



Asking Price: £450,000

Freehold

ROBINSON-JACKSON
Our service will *move* you

Wickham Street, Welling

Offered CHAIN FREE is this THREE BEDROOM SEMI-DETACHED family home with potential to extend (STPP). Convenient for schools, East Wickham Open Space and Welling mainline station.

Property Features

- Council Tax: D
- EPC Rating: E
- 14FT LOUNGE
- 11FT DINING ROOM
- CHAIN FREE
- DOUBLE GLAZED
- OFF STREET PARKING
- GARDEN



Interior

Entrance Hall: Wooden door to front, double glazed window to front and carpet as fitted.

Lounge: 4.32m x 3.45m (14'2" x 11'4") Double glazed window to front, double glazed window to rear and carpet as fitted.

Dining Room: 3.63m x 3.02m (11'11" x 9'11") Double glazed window to front and carpet as fitted.

Kitchen: 3.94m x 2.57m (12'11" x 8'5") Fitted with a range of wall and base units with contrasting work surfaces. Vinyl flooring and double glazed window to rear. Wooden door to shower room.

Ground Floor Shower Room: Fitted with a two piece suite comprising of pedestal wash hand basin and shower. Vinyl flooring and double glazed window to rear.

Ground Floor WC: Fitted with a low level wc, wood style laminate flooring and double glazed window to side.

Landing: Carpet as fitted.

Bedroom 1: 4.34m x 3.53m (14'3" x 11'7") Double glazed window to front, double glazed window to rear and carpet as fitted.

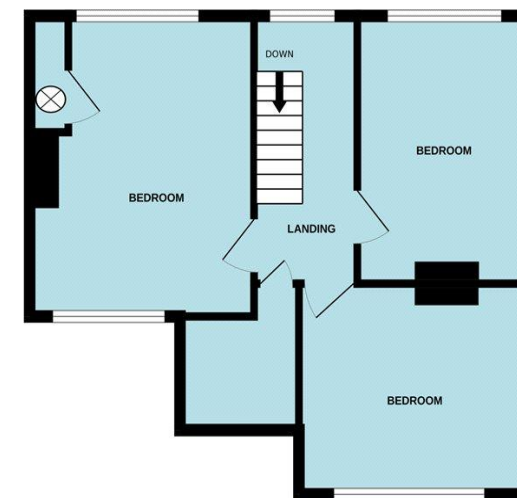
Bedroom 2: 3.63m x 3.02m (11'11" x 9'11") Double glazed window to front and carpet as fitted.

Bedroom 3: 3.94m x 2.72m (12'11" x 8'11") Double glazed window to rear and carpet as fitted.

GROUND FLOOR
493 sq.ft. (45.8 sq.m.) approx.



1ST FLOOR
483 sq.ft. (44.9 sq.m.) approx.



TOTAL FLOOR AREA: 976 sq.ft. (90.7 sq.m.) approx.

Whilst every attempt has been made to ensure the accuracy of the floorplan contained here, measurements of doors, windows, rooms and any other items are approximate and no responsibility is taken for any error, omission or mis-statement. This plan is for illustrative purposes only and should be used as such by any prospective purchaser. The services, systems and appliances shown have not been tested and no guarantee as to their operability or efficiency can be given.
Made with Metropix ©2024





Property Location

Wickham Street, Welling, Kent, DA16 3BS



Exterior

Garden: Mainly laid to lawn with paved area and pond. Shed and greenhouse.

Parking: Driveway providing off street parking.

Additional Information

Please note that any potential to extend is subject to obtaining the relevant planning consent from the local authority.

Welling has been a favoured town for many years, with access to Bexley borough's four grammar schools as well as the 78-hectare Danson Park, with its historic house, boating lake, sports pitches, splash park and pub.

The town's heart is in the High Street, where you'll find shops, pubs, restaurants and the mainline train station, with its direct trains to London.

Don't miss Crook Log Leisure Centre – Welling's sports and pool complex.

**FOR MORE INFORMATION
CONTACT US TODAY.**

Scott Dowler - Branch Manager
020 8303 5213

Robinson Jackson
146 Welling High Street,
Welling,
DA16 1TJ

welling@robinson-jackson.com

SALES | MORTGAGES | LEGALS

ROBINSON-JACKSON