



Hillmore Grove | London, SE26 5RW



£475,000
Freehold

ROBINSON-JACKSON
Our service will *move* you

Hillmore Grove, London

Introducing this 3 bedroom terrace house, a cherished family home since its construction, awaiting a new chapter. While it beckons for TLC, its abundant potential is evident. The fully boarded loft, ripe for converting STPP. Sliding doors welcoming sunlight from the south facing garden. Loads of potential to make your own.

Property Features

- EPC Rating: F
- Three Bedrooms
- Modern Terraced Family Home
- Chain Free
- Freehold
- South Facing Front and Rear Garden
- Ample Storage
- Original Features
- In Need of TLC
- Fantastic Potential



Interior

Entrance Hall Carpet

Lounge Single glazed window to front, carpet, sliding doors to rear

Kitchen Single glazed window to rear, range of wall and bas units, laminate work surface, stainless steel sink with drainer, integrated oven and hob, washing machine plumbed for, vinyl flooring

Master Bedroom Single glazed window to front, built in cupboard, carpet

Bedroom Two Window to rear, built in cupboard, carpet

Bedroom Three Single glazed window to front, carpet

Bathroom Double glazed window to rear, walk in shower cubicle, wash hand basin, low flush wc, carpet, extractor fan

Garden South facing, laid to lawn

Exterior

South facing rear garden mainly laid to lawn with shed and side access

Additional Information

Ample storage

Chain free

Freehold

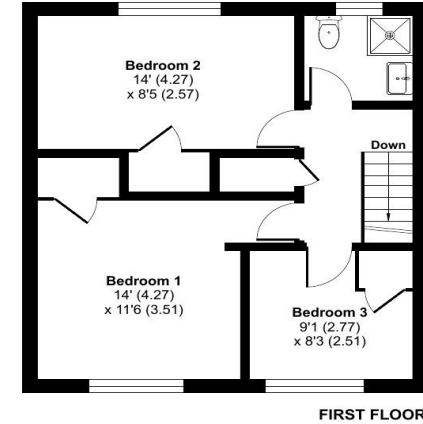
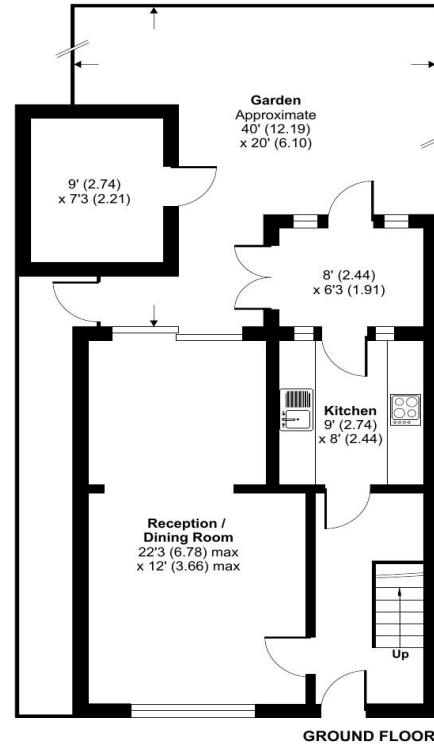
Original features

In need of TLC

Fantastic potential

Ideal for Sydenham Station

Conveniently located for local high street shops and amenities, the award winning Mayow Park and Alexandra Recreation Ground



Approximate Area = 943 sq ft / 87.6 sq m
Outbuilding = 66 sq ft / 6.1 sq m
Total = 1009 sq ft / 93.7 sq m
For identification only - Not to scale



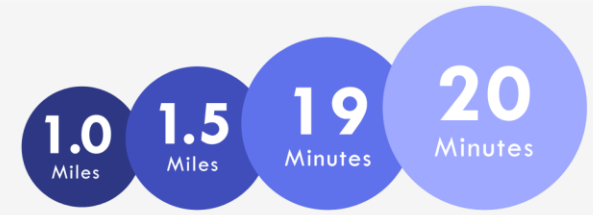
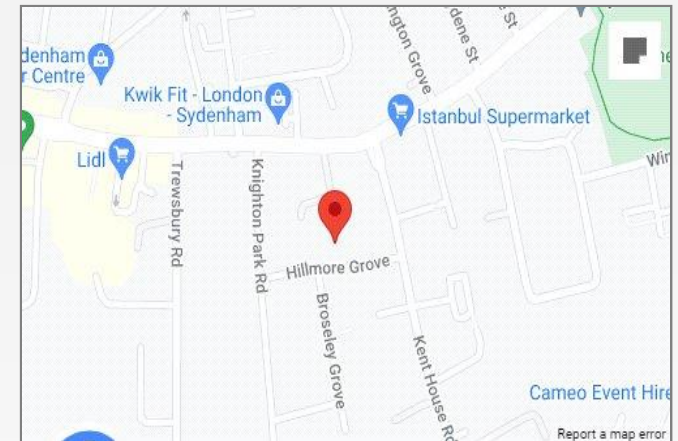
Floor plan produced in accordance with RICS Property Measurement Standards incorporating International Property Measurement Standards (IPMS2 Residential). © nchecon 2024.





Property Location

Hillmore Grove, London, SE26 5RW



Horniman Museum & Gardens Crystal Palace Canada Water Station Train to London Bridge

*All distances from branch postcode. Train time from nearest station.

**FOR MORE INFORMATION
CONTACT US TODAY.**

020 8776 6660

Robinson Jackson
256 Kirkdale,
Sydenham,
London SE26 4NL

sydenham@robinson-jackson.com

