



High Road | Wilmington, Dartford, DA2 7BN



Asking Price £530,000

Freehold

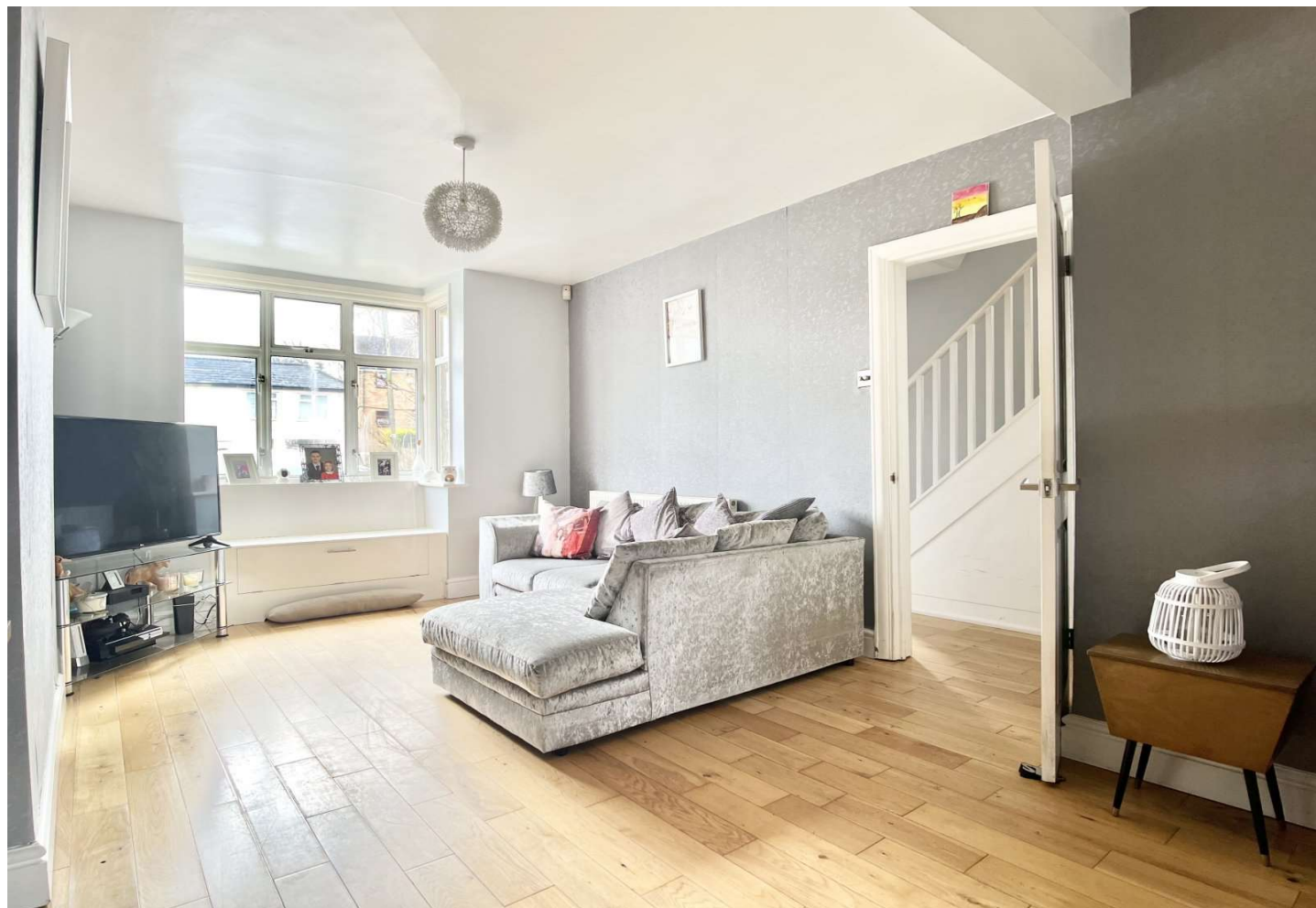
ROBINSON-JACKSON
Our service will *move* you

High Road, Wilmington

Robinson Jackson are delighted to offer for sale this extended 3 bedroom semi detached house in the popular location of Wilmington, with a long garden and in walking distance to the local Wilmington schools.

Property Features

- Council Tax: D
- EPC Rating: C
- Extended To The Front And On The Ground Floor To The Rear.
- Large Rear Garden
- Utility Room And Ground Floor WC
- Extended Kitchen Diner
- Parking For Numerous Cars To Front
- The Owner Has Found A Chain Free Property



Interior

Porch: Double glazed door to front, tiled floor.

Entrance Hall: Hard wood door with glazed window to front, double glazed window to side, under stairs storage cupboard, radiator, wood flooring.

Downstairs WC: Double glazed frosted window to side, low level WC, vanity wash hand basin with tap.

Lounge: Box bay double glazed window to front housing a window seat, two radiators. Wood flooring.

Kitchen Diner: Double glazed patio doors to rear, double glazed window to rear, lantern style sky light, range of fitted wall and base units with complimentary worktops, ceramic one and half bowl sink with mono flexi tap, built in dishwasher, built in fridge freezer built in wine cooler, range style oven with 8 ring gas hob and cooker hood, glass splash backs, tiled floor.

Utility Room: Range of fitted wall and base units with complimentary worktops, wall mounted boiler, plumbing for washing machine, space for tumble dryer, laminate wood flooring.

Landing: Double glazed window to side, carpet.

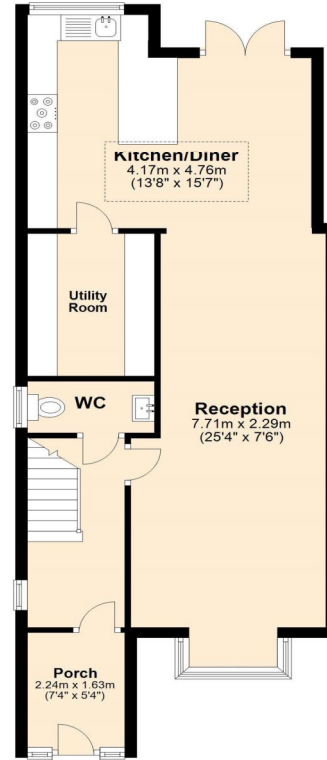
Bedroom One: Double glazed bay window to front, radiator, free standing fitted wardrobes, fitted carpet.

Bedroom Two: Double glazed window to rear, built in wardrobes, radiator, fitted carpet, view on the back garden.

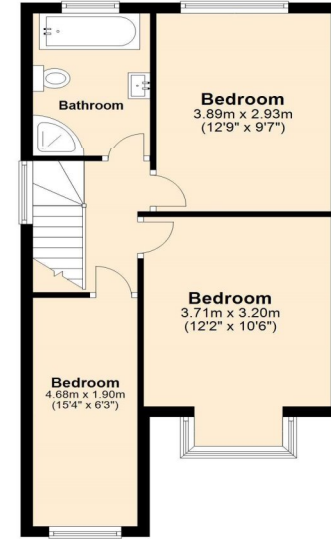
Bedroom Three: Extended with view to the front, double glazed window to front, radiator, laminate wood flooring.

Bathroom: Double glazed window to rear, panel bath with mixer tap and shower attachment, low level WC with concealed cistern, vanity mounted wash hand basin, heated towel rail, corner shower with sliding doors and Mira shower with rainfall head. tiled floor, tiled walls, loft access.

Ground Floor
Approx. 61.8 sq. metres (665.0 sq. feet)



First Floor
Approx. 43.8 sq. metres (470.9 sq. feet)



Total area: approx. 105.5 sq. metres (1136.0 sq. feet)





Property Location

High Road, Wilmington, Dartford, DA2 7BN



Additional Information

- The boiler is located in the utility room.
- The electric meter is located in the hallway .
- Gas meter is located in the cupboard under the stairs.
- The vendor has found a property.
- Council Tax Dartford Band D
- The garden faces North.
- The property measures 106 Square Metres

Exterior

- Front Garden Hardstanding providing off street parking for numerous cars.
- Rear garden Paved patio area, mainly laid to lawn. Flower and shrub boarders, raised seating area with wooden pergola, wooden storage shed , children's wooden play house. Outside tap and power socket.
- Pedestrian side access.
- Parking To front on private driveway.

**FOR MORE INFORMATION
CONTACT US TODAY.**

01322 281281
Robinson Jackson
22 Market Street,
Dartford,
Kent DA1 1EZ
dartford@robinson-jackson.com

