



Coverdale Avenue | Maidstone, Kent, ME15 9DR



Guide Price £325,000 - £350,000

Freehold

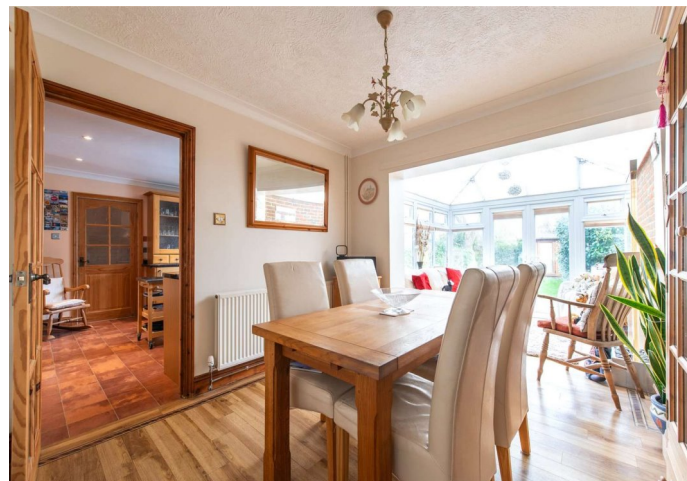
**ROBINSON MICHAEL & JACKSON**  
Our service will *move* you

## Coverdale Avenue, Maidstone

This charming property offers three generously sized double bedrooms, each with ample wardrobe space. Downstairs has an abundance of natural sunlight throughout.

### Property Features

- Council Tax: C
- EPC Rating: D
- OFFERS OVER £350,000
- Three double bedroom family home
- Family bathroom & separate W/C
- Driveway
- Landscaped private rear garden
- 10 x 10 Brick built outbuilding with power
- Additional home office in garden with power



## Interior

**Entrance Hall** Window to front, Storage cupboard, stairs, door

**Lounge** 4.11m x 3.89m (13'6" x 12'9") Window to front, fireplace, door

**Reception Room** 3.3m x 3.1m (10'10" x 10'2") Open plan into conservatory

**Conservatory** Two windows to rear, window to side, double door

**Kitchen** 4.5m x 3.78m (14'9" x 12'5") Window to rear, door, integrated appliances

**Rear Lobby** Door, leads through to downstairs WC

**Storage Cupboards**

**Downstairs WC** Window to the side & WC

**Workshop** Window to side, door

**Landing** Window to rear, Storage cupboard, door

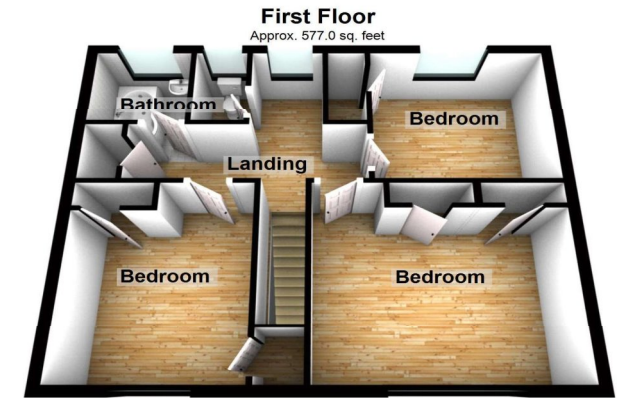
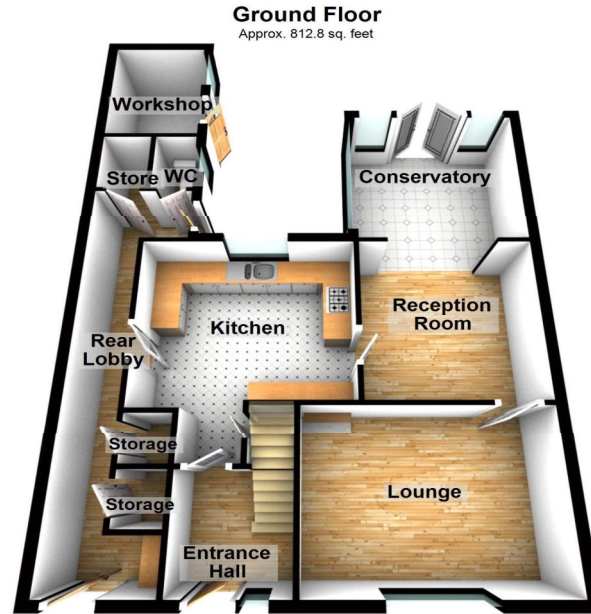
**Bedroom 1** 4.11m x 3.68m (13'6" x 12'1") Window to front, two storage cupboard, door, double bedroom

**Bedroom 2** 3.68m x 2.95m (12'1" x 9'8") Window to front, door, two storage cupboards, double bedroom

**Bedroom 3** 3.1m x 2.9m (10'2" x 9'6") Window to rear, door, one storage cupboard, double bedroom

**Bathroom** Window to rear, door, shower over bath, basin

**WC** Separate upstairs WC



Total area: approx. 1389.8 sq. feet

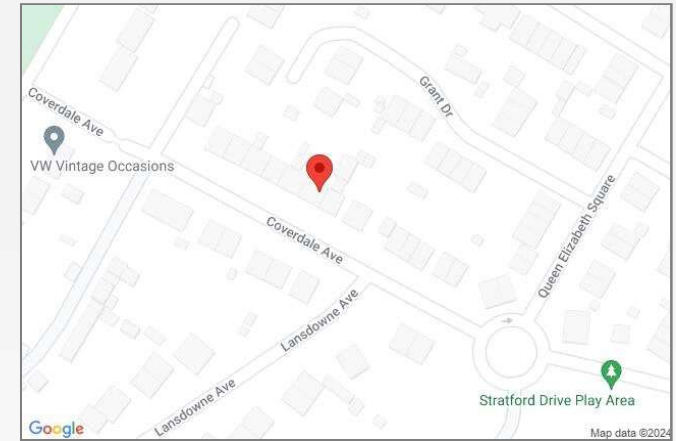
Please be advised this plan is offered for marketing purposes only. It can not be relied upon for exact or precise measurements, angles, window or door openings. Whilst every effort is made to ensure the accuracy the company or provider accepts no responsibility for the content. Plan produced using PlanUp.





## Property Location

Coverdale Avenue, Maidstone, Kent, ME15 9DR



    **Scan for the latest properties...** 

Follow us on **facebook** for early access to new properties for sale.



**FOR MORE INFORMATION  
CONTACT US TODAY.**

01622 476666  
Robinson Michael & Jackson  
15A King Street  
Maidstone,  
Kent ME14 1BA  
maidstone@robinson-jackson.com

