



Sydenham Park Road | London, SE26 4LP



Asking Price £375,000

Leasehold

ROBINSON-JACKSON
Our service will *move* you

Sydenham Park Road, London

Fantastic Second floor modern purpose built flat with two double bedrooms, residents parking, secluded communal garden, double glazing, laminate flooring, ample storage, access to loft and entry phone set within a highly desirable location within walking distance to Sydenham Station and conveniently located for Sydenham High Street and the award winning Mayow Park

Property Features

- Council Tax: C
- EPC Rating: E
- Two Double Bedrooms
- Modern Purpose Built Flat
- Leasehold
- First Floor



Interior

Communal Entrance Glazed wooden entrance door, carpet, stairs to first floor.

Entrance Hall Wooden entrance door, storage cupboard, entry phone, laminate flooring, access to loft, textured ceiling.

Lounge Double glazed window to front, two radiators, laminate flooring, textured ceiling, door to kitchen.

Kitchen Double glazed window to side, range of fitted white high gloss wall and base units with work surface over, glass splash back, one and half bowl stainless steel sink unit with mixer tap, oven, hob and extractor fan to remain, plumbing for washing machine and dishwasher, wall mounted boiler, tiled flooring, textured ceiling.

Bedroom One Double glazed window to front and side, radiator, built in wardrobe, laminate flooring, textured ceiling.

Bedroom Two Double glazed window to front, radiator, textured ceiling.

Bathroom Three piece bathroom suite comprising of: panelled bath with mixer tap and electric power shower over, inset wash hand basin with mixer tap and vanity unit under, low level wc, radiator, tiled flooring, tiled walls, extractor fan, spotlights.

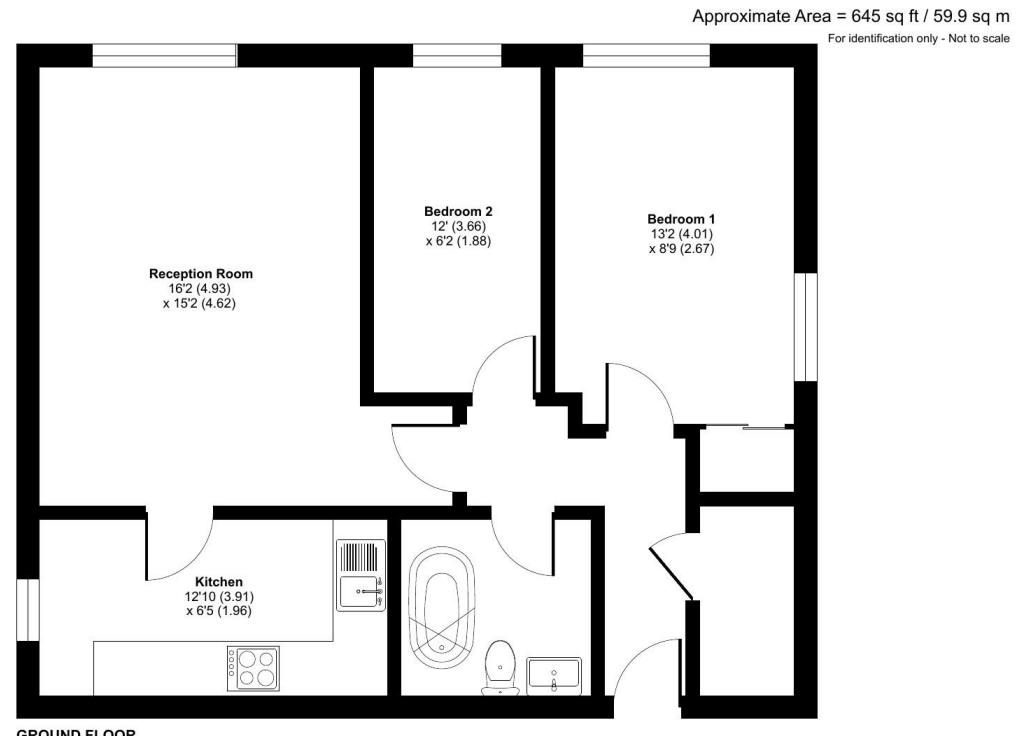
Exterior

Residents Parking Off street parking for residents.

Communal Garden Mainly laid to lawn.

Leasehold Information

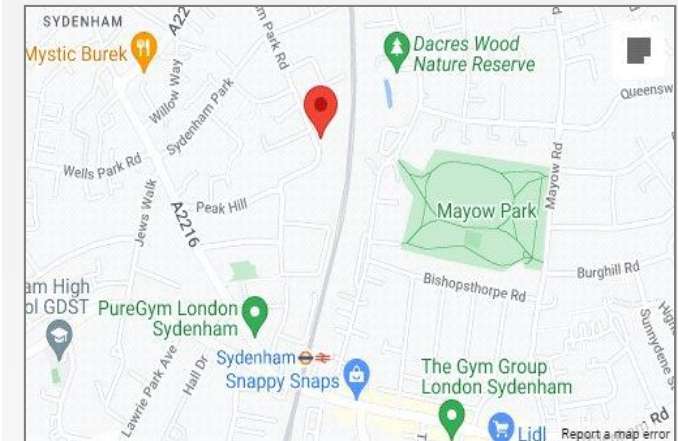
Time remaining on lease: Approx. 87 years and 11 months





Property Location

Sydenham Park Road, London, SE26 4LP



Additional Information

Two Double Bedrooms

Modern Purpose Built Flat

Leasehold

Second Floor

Residents Parking

Secluded Communal Garden

Laminate Flooring Where Stated

Access to loft

Ample Storage

Entry Phone

High Specification

Sydenham Station

Conveniently located for High Street and the award winning Mayow Park

**FOR MORE INFORMATION
CONTACT US TODAY.**

020 8776 6660

Robinson Jackson
256 Kirkdale,
Sydenham,
London SE26 4NL

sydenham@robinson-jackson.com



These particulars do not form part of an offer or contract and must not be relied upon as statements or representation of fact. Any areas, measurements, journey times or distances are approximate. The text, images, photographs and plans are for guidance only and are not necessarily comprehensive. It should not be assumed that the property has all necessary planning, building regulation or other consents and we have not tested any services, equipment or facilities. References to tenure are based on information supplied by the seller. Buyer should verify all information themselves by inspection or otherwise prior to a legal commitment to purchase. Photos and images are subject to copyright.