



Bullivant Close | Greenhithe, Kent, DA9 9PB



Guide Price: £350,000 to £375,000 Freehold

ROBINSON-JACKSON
Our service will *move* you

Bullivant Close, Greenhithe

Robinson-Jackson are delighted to offer this CHAIN FREE semi-detached home to the market in the sought after location of Bullivant Close in Greenhithe. With 2-bedrooms the home is located on a quiet close and is ready to move straight into.

The ground floor consists of a living/dining area, kitchen and conservatory to the rear. The first floor comprises of a landing, bathroom and 2-bedrooms (with built-in storage to the master).

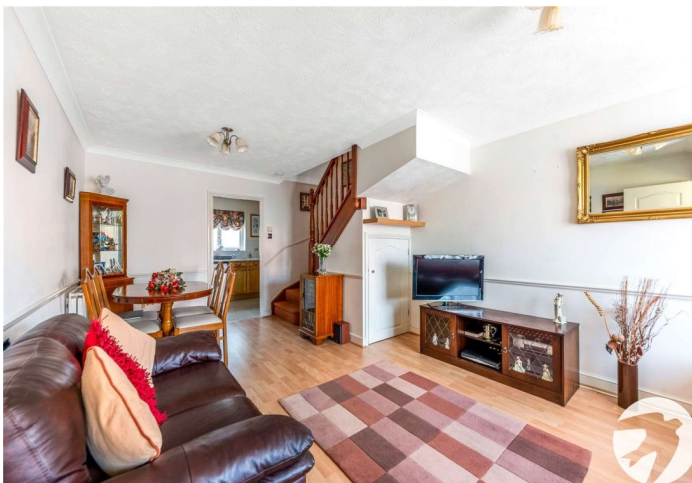
Externally you will find a generous driveway to the front with lawn. To the rear you will find a well established garden with patio perfect for entertaining. This is truly a MUST SEE home and internal viewing is essential to fully appreciate everything this property has to offer. Please contact Robinson-Jackson today to book your viewing.

Bullivant Close is located within easy reach of Greenhithe Station, Stone Crossing Station, Asda Supermarket and Bluewater Shopping Centre.

With the A2 and Stations in close proximity, reaching London on a daily basis, couldn't be more simple!

Property Features

- Conservatory
- Garden
- Driveway
- Semi-Detached
- Close To Greenhithe Station
- Close to Bluewater



Interior

Lounge/Dining Room: 6m x 3.56m (19'8" x 11'8")

Double glazed window to front. Under stairs storage cupboard. Two radiators. Laminate flooring. Carpeted stairs to first floor.

Conservatory: 3m x 3m (9'10" x 9'10") Double glazed windows to rear and side. Double glazed door leading to garden. Vinyl flooring.

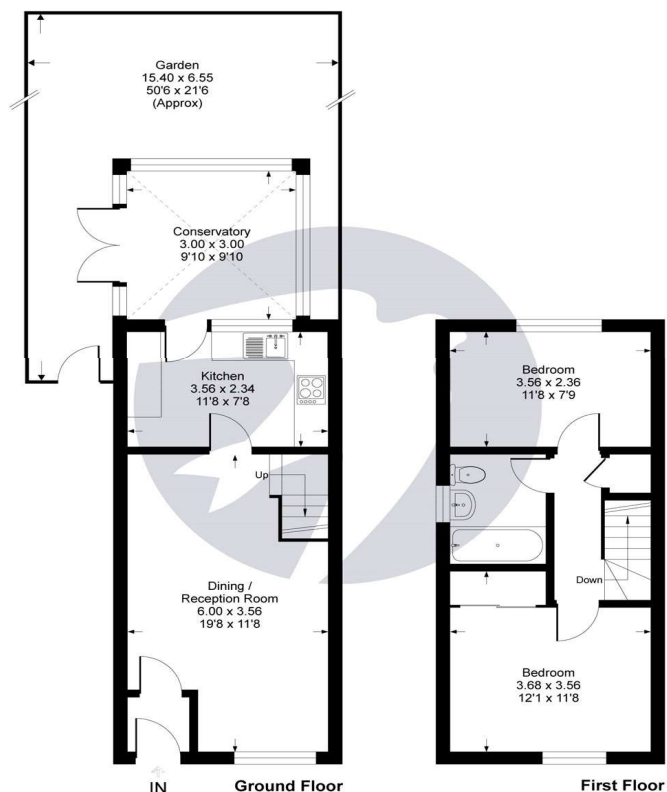
Kitchen: 3.56m x 2.34m (11'8" x 7'8") Double glazed window to rear. Range of matching wall and base units with complimentary work surface over. Stainless steel sink with drainer. Space for cooker. Extractor fan. Integrated dishwasher. Space and plumbing for washing machine. Space for fridge freezer. Part tiled walls. Vinyl flooring.

Bedroom One: 3.68m x 3.56m (12'1" x 11'8") Double glazed window to front. Built in wardrobes. Radiator. Carpet.

Bedroom Two: 3.56m x 2.36m (11'8" x 7'9") Double glazed window to rear. Radiator. Carpet.

Bathroom: Double glazed frosted window to side. Low level WC. Pedestal wash hand basin. Panelled bath with shower attachment. Radiator. Part tiled walls. Carpet.

Bullivant Close, DA9
Approximate Gross Internal Area = 70 sq m / 755 sq ft





Exterior

Rear Garden: Approximately 50ft. Mainly laid to lawn. Established shrubs. Timber shed.

Private driveway.

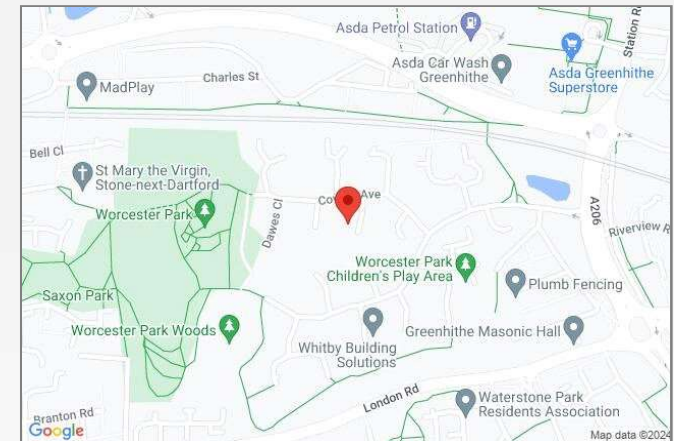
Additional Information

Dartford Borough Council - Tax Band D

Total floor area: 60 sq. metres

Property Location

Bullivant Close, Greenhithe, Kent, DA9 9PB



FOR MORE INFORMATION
CONTACT US TODAY.

01322 624440

Robinson Jackson
39 High Street,
Swanscombe
Kent,
DA10 0AG

swanscombe@robinson-jackson.com

