



# Hockers Lane

Detling | Maidstone | ME14 3JL







# Hockers Lane

Detling, Maidstone, ME14 3JL

Offers Over £600,000

Freehold

This charming, chain-free, 4-bedroom link detached family home in the sought-after village of Detling offers the perfect blend of countryside charm and convenient living.

Relax and connect with nature in your generous west-facing rear garden, a beautifully landscaped haven perfect for enjoying the sunshine and fresh air.

Detling boasts the best of both worlds: idyllic rural living with excellent commuter connections. Nestled beside the North Downs, an Area of Outstanding Natural Beauty, the village offers easy access to the beauty of the Pilgrims Way.

## Benefitting from:

- Charming 4-bedroom detached family home
- Located in sought-after Detling village.
- Open-plan kitchen/diner
- Driveway for multiple vehicles
- Separate utility room for added convenience.
- Generous, landscaped west facing garden.
- Chain-free
- Excellent commuter links
- Council Tax: E
- EPC Rating: D





## Accommodation

**Entrance Hall** Two windows to front, stairs, door

**Lounge** 5.66m x 3.5m (18'7" x 11'6") Window to front, fireplace, door

**Downstairs WC Basin & WC**

**Kitchen/Breakfast Room** 7.95m x 5.66m (26'1" x 18'7") Window to rear, Storage cupboard, bi-fold door, door to the utility room and side door to the garden

**Utility Room** 4.62m x 2.3m (15'2" x 7'7") Window to rear, two doors

**Garage** Two windows to side, electric door

**Bedroom 1** 4.32m x 3.38m (14'2" x 11'1") Window to front, door, double bedroom, benefits from en-suite

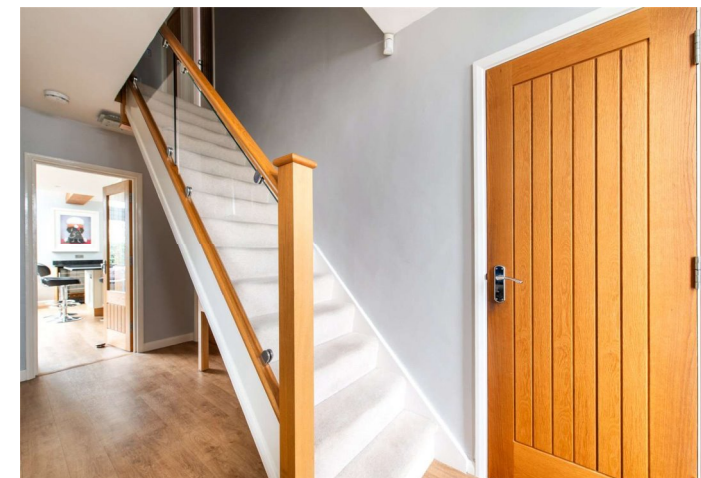
**En-Suite** Walk in shower, WC & basin

**Bedroom 2** 3.35m x 2.64m (11' x 8'8") Window to rear, door, double bedroom

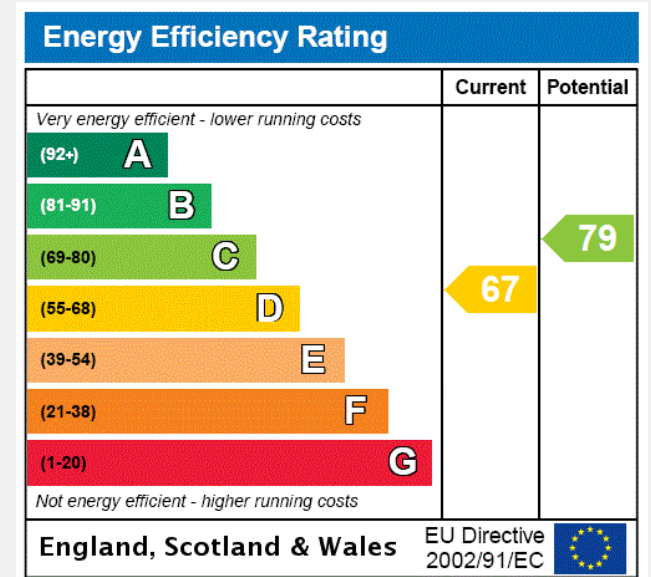
**Bedroom 3** 3.35m x 2.6m (11' x 8'6") Window to rear, door, double bedroom

**Bedroom 4** 3.38m x 2.6m (11'1" x 8'6") Window to front, door, double bedroom, built in storage

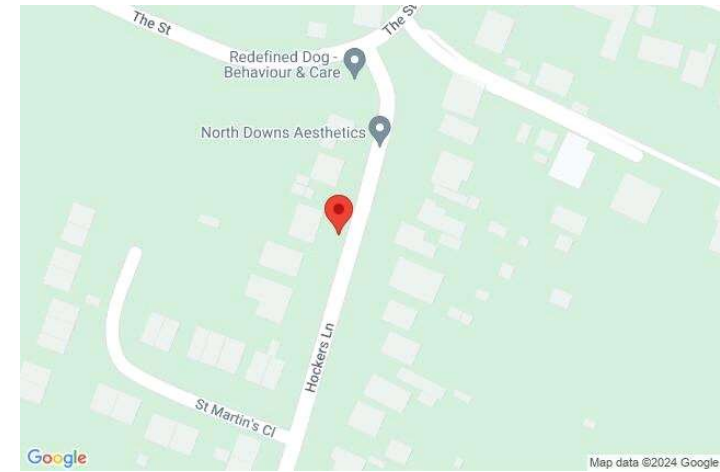
**Bathroom** Window to rear, door, walk in shower, bath & WC











## Important Notice

These particulars do not form part of an offer or contract and must not be relied upon as statements or representation of fact. Any areas, measurements, journey times or distances are approximate. The text, images, photographs and plans are for guidance only and are not necessarily comprehensive. It should not be assumed that the property has all necessary planning, building regulation or other consents and we have not tested any services, equipment or facilities. References to tenure are based on information supplied by the seller. Buyer should verify all information themselves by inspection or otherwise prior to a legal commitment to purchase. Photos and images are subject to copyright.

**Scan for the latest properties...**

Follow us on **facebook** for early access to new properties for sale.

@rmjmaidstone



**FOR MORE INFORMATION CONTACT US TODAY.**

Tj Yardley - Branch Manager

01622 476666

Robinson Michael & Jackson

15A King Street

Maidstone,

Kent ME14 1BA

maidstone@robinson-jackson.com

SALES | MORTGAGES | LEGALS

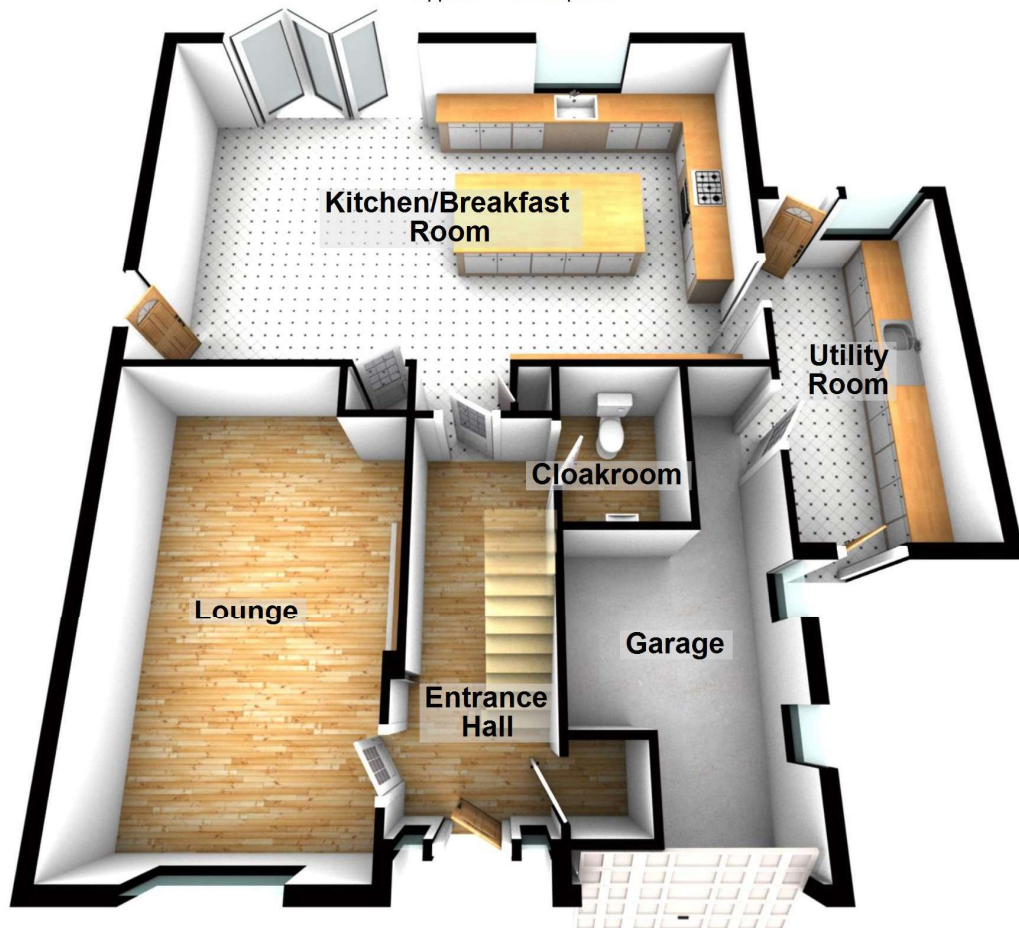
**ROBINSON MICHAEL & JACKSON**





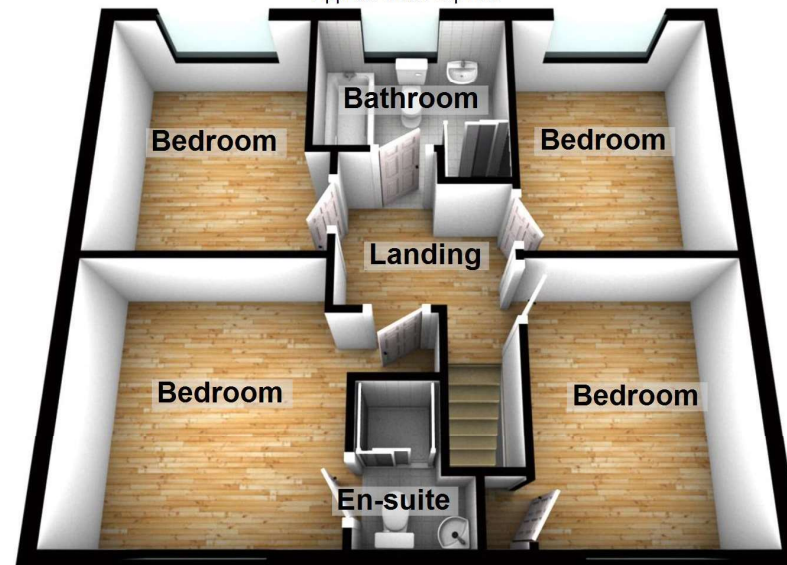
### Ground Floor

Approx. 1041.4 sq. feet



### First Floor

Approx. 583.7 sq. feet



Total area: approx. 1625.2 sq. feet

Please be advised this plan is offered for marketing purposes only. It can not be relied upon for exact or precise measurements, angles, window or door openings. Whilst every effort is made to ensure the accuracy the company or provider accepts no responsibility for the content. Plan produced using PlanUp.



