



Newbridge Point | Windrush Lane, Forest Hill, SE23 2XA

 1  1  1

£200,000
Leasehold

Newbridge Point, Windrush Lane

CASH BUYERS ONLY

Beautiful modern purpose built flat offered chain free with one bedroom, leasehold, residents parking, great views, double glazing, laminate flooring, ample storage and entry phone set within a highly desirable location, ideal for Forest Hill Station, conveniently located for local independent shops, eateries and bars, the award winning Mayow Park and Horniman Museum & Gardens

Property Features

- EPC Rating: C
- CASH BUYERS ONLY
- One Bedroom
- Modern Purpose Built Flat
- Chain Free
- Leasehold
- Residents Parking
- Double Glazing
- Laminate Flooring Where Stated
- Ample Storage



Interior

Entrance Hall Storage cupboard, laminate flooring, radiator

Lounge Double glazed wide aspect window to rear, laminate flooring, radiator

Balcony

Kitchen Double glazed window to side, base wall units, stainless steel sink, laminate work surface, integrated oven and stainless steel hob, washing machine plumbed for, space for fridge/freezer, laminate flooring

Bedroom Double glazed window to rear, built in wardrobe, laminate flooring, radiator

Bathroom Double glazed window to front, panelled bath, wash hand basin, low flush WC, tiled flooring

Exterior

Residents parking

Balcony

Additional Information

Double glazing

Central heating

Laminate flooring where stated

Ample storage

Entry phone

Chain free

Leasehold

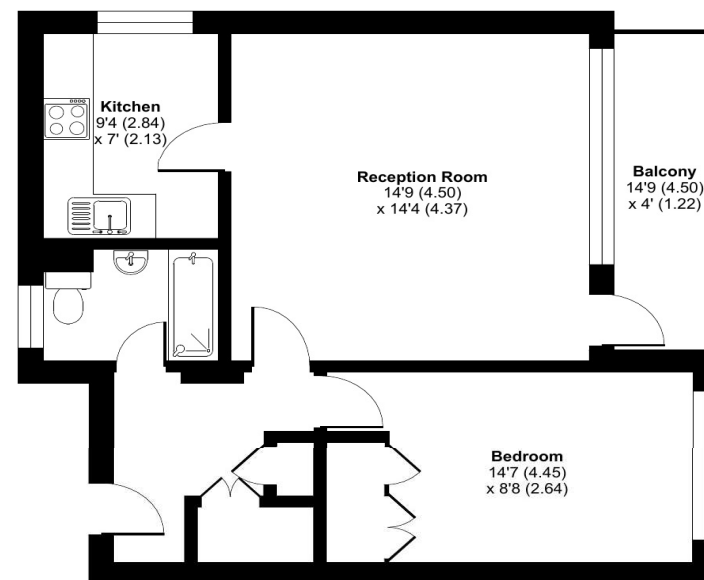
Ideal for Forest Hill Station

Conveniently located for local independent shops, eateries and bars, the award winning Mayow Park and Horniman Museum & Gardens



Approximate Area = 534 sq ft / 49.6 sq m

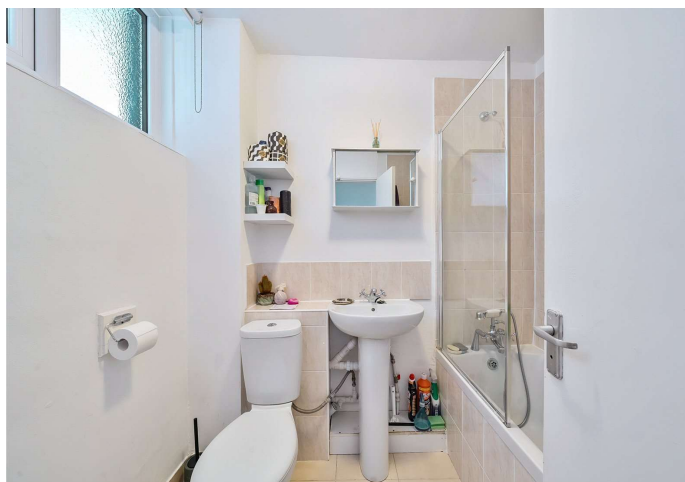
For identification only - Not to scale



SEVENTH FLOOR



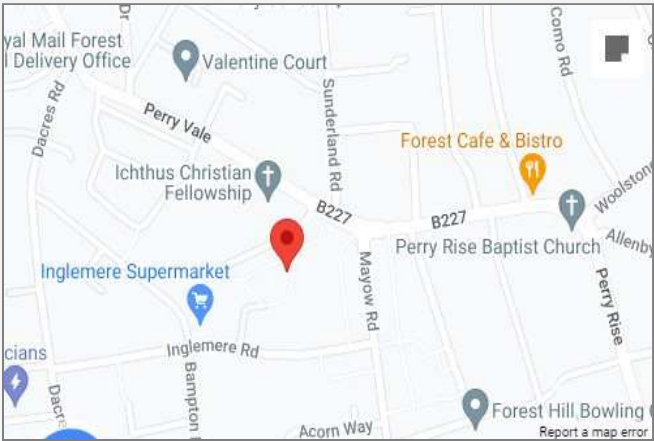
Floor plan produced in accordance with RICS Property Measurement Standards incorporating International Property Measurement Standards (IPMS2 Residential). © nchecon 2024.





Property Location

Newbridge Point, Windrush Lane, Forest Hill, SE23 2XA



Horniman Museum & Gardens Lordship Lane Train to Canada Water Train to London Bridge
*All distances from SE23 3HB postcode. Train time from Forest Hill station.

FOR MORE INFORMATION CONTACT US TODAY.

020 8776 6660
Robinson Jackson
256 Kirkdale,
Sydenham,
London SE26 4NL
sydenham@robinson-jackson.com



These particulars do not form part of an offer or contract and must not be relied upon as statements or representation of fact. Any areas, measurements, journey times or distances are approximate. The text, images, photographs and plans are for guidance only and are not necessarily comprehensive. It should not be assumed that the property has all necessary planning, building regulation or other consents and we have not tested any services, equipment or facilities. References to tenure are based on information supplied by the seller. Buyer should verify all information themselves by inspection or otherwise prior to a legal commitment to purchase. Photos and images are subject to copyright.