



Clyde Terrace | Forest Hill, London, SE23 3EH



Asking Price £190,000 40% SHARED OWNERSHIP
Leasehold

ROBINSON-JACKSON
Our service will *move* you

Clyde Terrace, Forest Hill

fourth floor modern purpose built SHARED OWNERSHIP apartment with two double bedrooms, open plan Lounge/Kitchen, balcony, long lease, secluded communal courtyard, double glazing, integrated appliances, ample storage and entry phone set within a popular cul-de-sac location, ideal for Forest Hill Station, conveniently located for High Street and the award winning Mayow Park

Property Features

- Council Tax: D
- EPC Rating: B
- ** SHARED OWNERSHIP **
- Double glazing
- Central heating
- Ample storage



Interior

Communal Entrance Double glazed communal entrance door, Stairs and lift to fourth floor, bike storage.

Entrance Hall Wooden entrance door, laminate flooring, double storage cupboard, spotlights.

Lounge/Kitchen Lounge: Full height double glazed window to rear, radiator, laminate flooring, open to kitchen. Kitchen: Full height double glazed window to rear, double glazed door to balcony, range of fitted high gloss wall and base units with granite work surface over, one bowl stainless steel sink unit with mixer tap, oven, hob and extractor fan to remain, integrated dishwasher, washing machine and fridge/freezer, laminate flooring, spotlights.

Bedroom One Full height double glazed window to side, radiator, carpet, door to ensuite.

En Suite Shower Room Three piece suite comprising of: enclosed shower cubicle with mixer shower over, tiled walls and sliding door, pedestal wash hand basin with mixer tap and low level wc, heated towel rail, tiled flooring, part tiled walls, extractor fan, spotlights.

Bedroom Two Full height double glazed window to side, radiator, carpet.

Bathroom Three piece bathroom suite comprising of: tiled panelled bath with mixer tap and shower attachment, inset wash hand basin with mixer tap and enclosed low level wc, heated towel rail, tiled flooring, part tiled walls, extractor fan, spotlights.

Exterior

Balcony Decked, overlooking communal grounds.

Leasehold Information

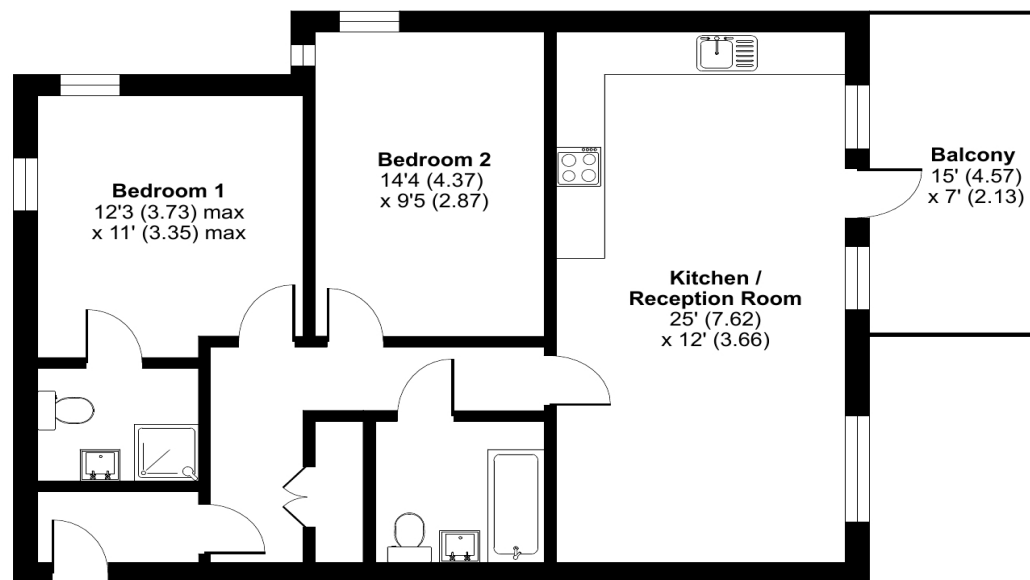
Time remaining on lease: Approx. 119 years

Service Charge: £144.00 Per month

Rent: £796.00 Per month



Approximate Area = 803 sq ft / 74.6 sq m
For identification only - Not to scale



FOURTH FLOOR



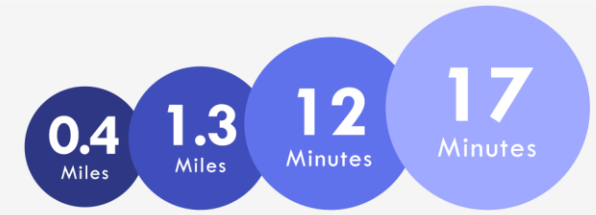
Floor plan produced in accordance with RICS Property Measurement Standards incorporating International Property Measurement Standards (IPMS2 Residential). © ncthecom 2024.





Property Location

Clyde Terrace, Lewisham, London, SE23 3EH



Horniman Museum & Gardens Lordship Lane Train to Canada Water Train to London Bridge

*All distances from SE23 3HB postcode. Train time from Forest Hill station.

Additional Information

** SHARED OWNERSHIP **

Central heating

Ample storage

Entry phone

Long lease

Leasehold

Integrated appliances

Open plan

High specification

Balcony

En Suite Shower Room

Ideal for Forest Hill Station

Conveniently located for High Street and the award winning Mayow Park

**FOR MORE INFORMATION
CONTACT US TODAY.**

020 8776 6660

Robinson Jackson
256 Kirkdale,
Sydenham,
London SE26 4NL

sydenham@robinson-jackson.com



These particulars do not form part of an offer or contract and must not be relied upon as statements or representation of fact. Any areas, measurements, journey times or distances are approximate. The text, images, photographs and plans are for guidance only and are not necessarily comprehensive. It should not be assumed that the property has all necessary planning, building regulation or other consents and we have not tested any services, equipment or facilities. References to tenure are based on information supplied by the seller. Buyer should verify all information themselves by inspection or otherwise prior to a legal commitment to purchase. Photos and images are subject to copyright.