



The Street | Detling, Maidstone, ME14 3JT



Offers Over £300,000 Freehold

ROBINSON MICHAEL & JACKSON
Our service will *move* you

The Street, Detling

Nestled in a popular village location, this delightful two-bedroom, semi-detached period cottage offers a unique blend of character and practicality.

Property Features

- Council Tax: D
- EPC Rating: E
- Two bedroom semi-detached period cottage
- Sought-after village location with popular pub and award-winning community shop
- Useful basement room currently used as 3rd bedroom
- Enclosed private rear garden
- Period features and charm throughout
- Situated with easy access to Maidstone town centre, M20 motorway and Bearsted Station (on direct line to London)
- Stunning countryside walks on the North Downs.



Interior

Lounge 4.32m x 4.01m (14'2" x 13'2") Walk straight into lounge, built in fireplace, leads through to the kitchen

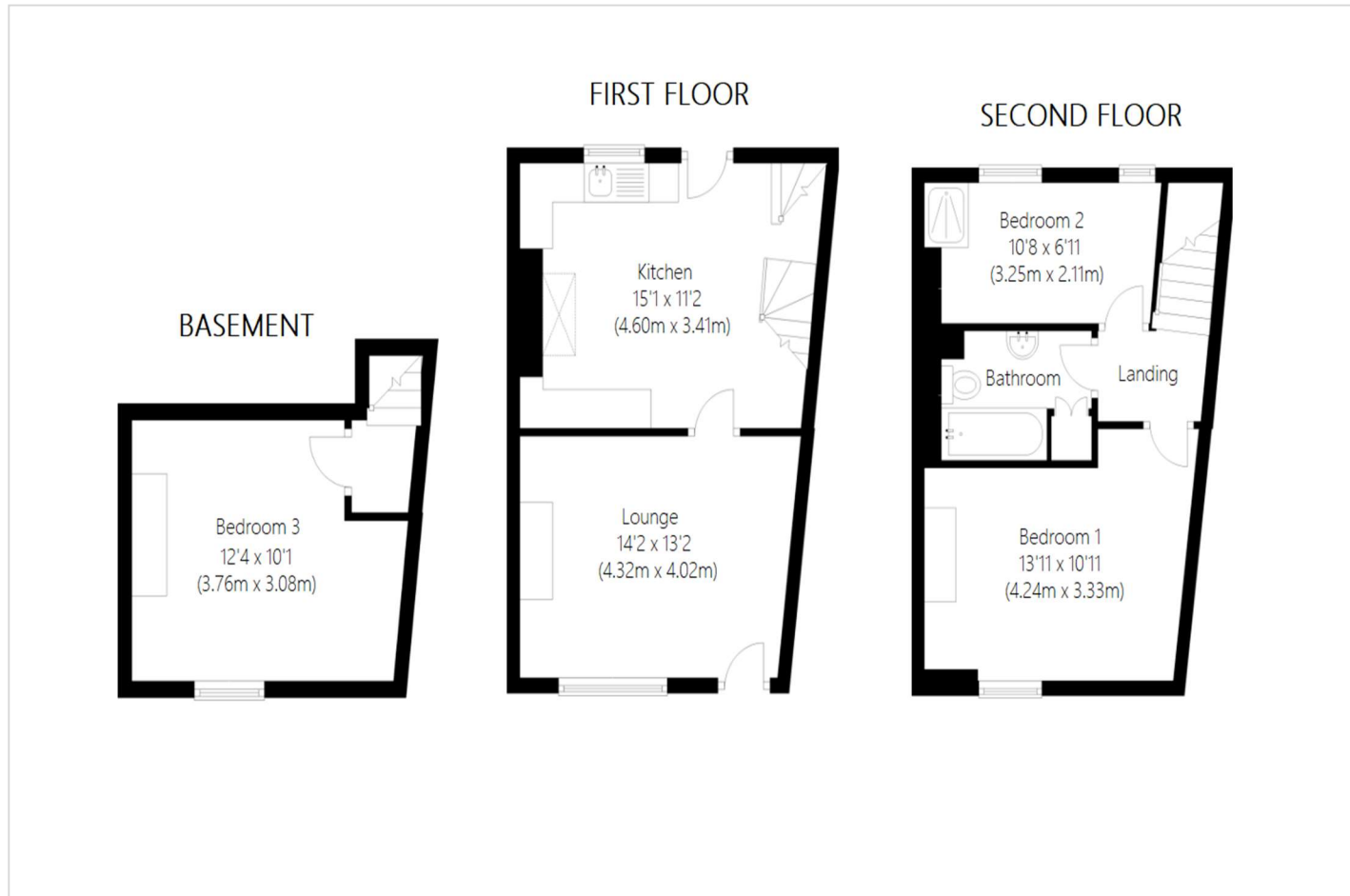
Kitchen 4.6m x 3.4m (15'1" x 11'2") Door leading into the garden, window to the rear, kitchen/dining room

Bedroom 1 4.24m x 3.33m (13'11" x 10'11") Window to the front, double bedroom

Bedroom 2 3.25m x 2.1m (10'8" x 6'11") Window to the rear, shower

Bedroom 3 3.76m x 3.07m (12'4" x 10'1") Window to the front, converted cellar

Bathroom Bath, basin & WC





Property Location

The Street, Detling, Maidstone, ME14 3JT



    Scan for the latest properties... 

Follow us on **facebook** for early access to new properties for sale.

Key Facts For Buyers



FOR MORE INFORMATION CONTACT US TODAY.

01622 476666
Robinson Michael & Jackson
15A King Street
Maidstone,
Kent ME14 1BA
maidstone@robinson-jackson.com



These particulars do not form part of an offer or contract and must not be relied upon as statements or representation of fact. Any areas, measurements, journey times or distances are approximate. The text, images, photographs and plans are for guidance only and are not necessarily comprehensive. It should not be assumed that the property has all necessary planning, building regulation or other consents and we have not tested any services, equipment or facilities. References to tenure are based on information supplied by the seller. Buyer should verify all information themselves by inspection or otherwise prior to a legal commitment to purchase. Photos and images are subject to copyright.