



Kingfisher Meadow | Maidstone, Kent, ME16 8RB



Guide Price £280,000 - £300,000

Leasehold

ROBINSON MICHAEL & JACKSON

Our service will *move* you

Kingfisher Meadow, Maidstone

This impressive duplex apartment offers stunning views and expansive living space across two floors. Situated in a gated development, it boasts a prime location in Maidstone.

Property Features

- Council Tax: E
- EPC Rating: D
- Impeccable views of the River Medway
- Two Double Bedrooms
- Two Reception Rooms
- Allocated Parking
- Close to Maidstone Town Centre and Mainline Stations



Interior

Lounge/Diner 4.11m x 4.01m (13'6" x 13'2") Leads onto the balcony overlooking the river, open planned into kitchen

Kitchen 3.35m x 2.97m (11' x 9'9") Integrated appliances, open planned into lounge/diner

Study 4.01m x 1.88m (13'2" x 6'2") Window with river views, spacious room

Bathroom Bath, basin & WC

Bedroom 2 3.8m x 2.97m (12'6" x 9'9") Window overlooking the garden, double bedroom, sharps bespoke wardrobes, benefits from en-suite

En-Suite Walk in shower, basin & WC

Landing Stairs leading down, spacious area, potential to be used as office space

Bedroom 1 9.65m x 3.4m (31'8" x 11'2") On first floor, sharps bespoke dressing area, full floor room, benefits from bathroom, two Velux window, apex window with views of the river

En-Suite Walk in shower, bath, basin & WC

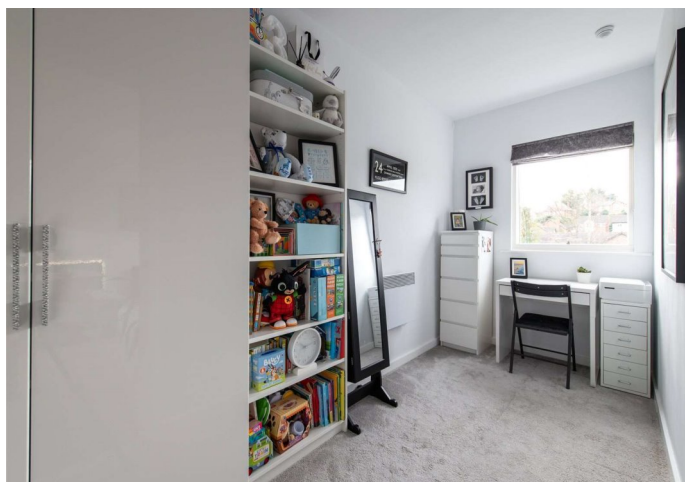
Leasehold Information

Time remaining on lease: Approx. 107 years

Ground Rent: £250 annually

Service Charge: £3,449.28 annually

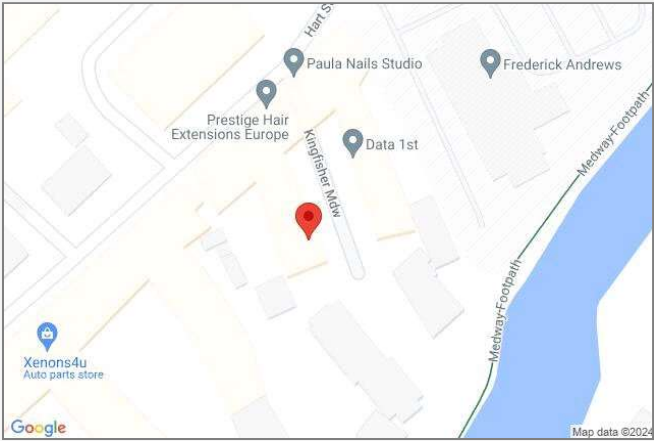
Ground Rent Review Date: 2031





Property Location

Kingfisher Meadow, Maidstone, Kent, ME16 8RB



Scan for the latest properties...

Follow us on **facebook** for early access to new properties for sale.



FOR MORE INFORMATION CONTACT US TODAY.

01622 476666
Robinson Michael & Jackson
15A King Street
Maidstone,
Kent ME14 1BA
maidstone@robinson-jackson.com



These particulars do not form part of an offer or contract and must not be relied upon as statements or representation of fact. Any areas, measurements, journey times or distances are approximate. The text, images, photographs and plans are for guidance only and are not necessarily comprehensive. It should not be assumed that the property has all necessary planning, building regulation or other consents and we have not tested any services, equipment or facilities. References to tenure are based on information supplied by the seller. Buyer should verify all information themselves by inspection or otherwise prior to a legal commitment to purchase. Photos and images are subject to copyright.