



Morgan Drive | Greenhithe, Kent, DA9 9DU



Asking Price: £350,000 Freehold

ROBINSON-JACKSON
Our service will *move* you

Morgan Drive, Greenhithe

Robinson-Jackson are delighted to offer this beautiful terraced home to the market in Morgan Drive, Greenhithe.

With 2-bedrooms this home is ready to move straight into. The ground floor consists of a living/dining area and kitchen to the rear.

The first floor comprises of a landing, bathroom and 2 bedrooms (with storage).

Externally you will find a artificial lawn area and path to the front with stunning garden perfect for entertaining to the rear. The garden has a patio, artificial lawn and decked entertaining space.

You also has the bonus of a garage en-block!

This is truly a MUST SEE home and internal viewing is essential to fully appreciate everything this property has to offer. Please contact Robinson-Jackson today to book your viewing.

With its prime location only a stone's throw away from Stone Crossing train station and the popular Bluewater shopping destination, this home offers a truly desirable lifestyle.

Property Features

- Close To Stone Crossing Station
- Garage
- Close To Bluewater
- Parking
- Well Presented Throughout
- Garden & Patio
- Walking Distance to Stone Primary School & Darent Valley Hospital



Interior

Lounge/Dining Room: 4.5m x 3.86m (14'9" x 12'8") Double glazed window to front. Understairs storage cupboard. Radiator. Laminate flooring.

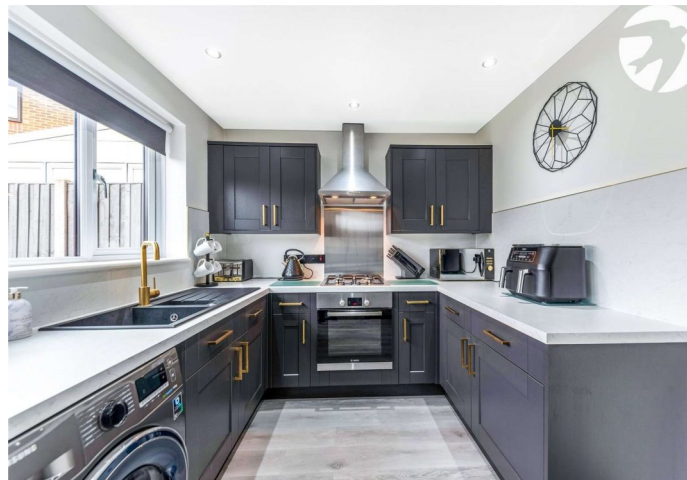
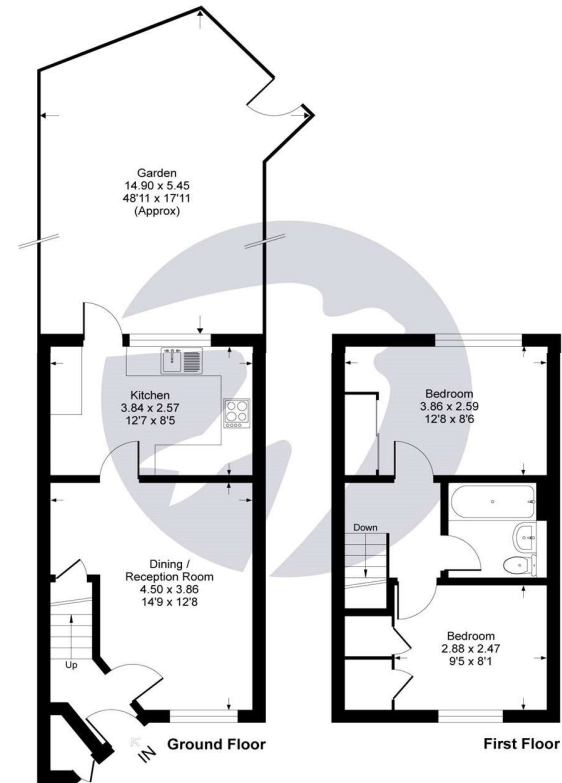
Kitchen: 3.84m x 2.57m (12'7" x 8'5") Double glazed window to rear and double glazed door leading to rear garden. Range of matching wall and base units with complimentary Quartz worktop & splashback. Composite sink with drainer. Breakfast bar. Integrated electric oven, gas hob and extractor. Space and plumbing for washing machine. Space for fridge freezer. Cupboard housing wall mounted boiler. Spotlights. Laminate flooring.

Bedroom One: 3.86m x 2.6m (12'8" x 8'6") Double glazed window to rear. Fitted wardrobes. Radiator. Spotlights. Carpet.

Bedroom Two: 2.87m x 2.46m (9'5" x 8'1") Double glazed window to front. Built in storage cupboards. Radiator. Carpet.

Bathroom: Low level WC. Vanity wash hand basin. Jacuzzi bath with shower attachment and shower screen. Spotlights. Tiled walls and flooring.

Morgan Drive, DA9
Approximate Gross Internal Area = 56 sq m / 604 sq ft





Exterior

Rear Garden: Approximately 49ft. Artificial lawn. Decked area with built in seating area. Raised flower beds. Timber shed.

Garage & Driveway

Additional Information

Dartford Borough Council - Tax Band C

Total floor area: 56 sq. metres

The current vendor pays an annual service charge of £258.81.

Property Location

Morgan Drive, Greenhithe, Kent, DA9 9DU



FOR MORE INFORMATION
CONTACT US TODAY.

01322 624440

Robinson Jackson
39 High Street,
Swanscombe
Kent,
DA10 0AG

swanscombe@robinson-jackson.com

