



East Hill

Dartford | Kent | DA1 1SW





East Hill

Dartford, Kent, DA1 1SW

Offers in excess of £475,000
Freehold

Robinson Jackson are pleased to offer this very well presented and maintained period family home located ideally for popular Primary and Secondary schools, Transport links and local amenities.

Benefitting from:

- Catchment to Sought After Schools
- Four Bedroom Family Home
- Two Reception Rooms
- En-Suite to Bedroom One
- Kitchen Diner
- Garage and Parking
- Council Tax: D
- EPC Rating: D



Accommodation

Entrance Porch Door to front. Tiled walls. Vinyl flooring.

Entrance Hall Door to porch. Radiator. Understairs storage drawers. Understairs storage cupboard. Vinyl flooring.

Lounge 4.34m x 3.7m (14'3" x 12'2") Double glazed Bay window to front. Feature fireplace. Radiator. Laminate flooring

Dining Room 3.48m x 3.25m (11'5" x 10'8") Double glazed window to rear. Feature fireplace. Radiator. Laminate flooring.

Kitchen Diner 4.34m x 3.33m (14'3" x 10'11") Double glazed windows to rear and side. Double glazed door to rear. Range of wall and base units with complementary worksurfaces over incorporating stainless steel sink drainer. Space for cooker. Space for fridge freezer. plumbed for washing machine and dishwasher. Part tiled walls. Tiled flooring.

Landing Carpet. Stairs to second floor. Doors to:

Bedroom Two 4.85m x 3.5m (15'11" x 11'6") Double glazed Bay window to front. Radiator. Fitted wardrobes. Laminate flooring.

Bedroom Three 3.48m x 3.28m (11'5" x 10'9") Double glazed window to rear. Radiator. Feature fireplace. Laminate flooring.

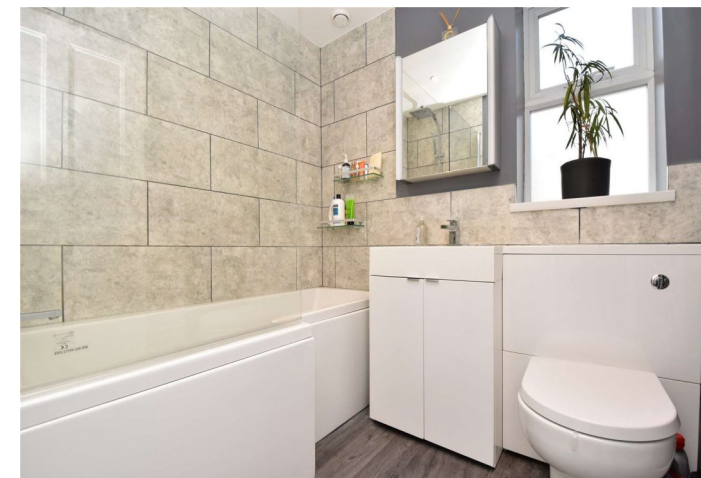
Bedroom Four 3.33m x 2.13m (10'11" x 7') Double glazed window to rear. Radiator. Laminate flooring.

Family Bathroom 2.08m x 1.73m (6'10" x 5'8") Double glazed window to side. Low level Wc. Vanity wash hand basin. Panelled Bath with shower over. Heated towel rail. Part tiled walls. Vinyl flooring.

Second Floor Landing Double glazed window to rear. Access to Loft housing the boiler. Carpet.

Bedroom One 5.36m x 2.7m (17'7" x 8'10") Double glazed windows to rear. Double glazed skylight to front. Radiator. Laminate flooring.

En-Suite Double glazed skylight to front. Radiator. Low level Wc. Shower cubicle. Shower cubicle. Heated towel rail. Part tiled walls. Tiled flooring.





Exterior

Front Garden: Side gated access. Hard standing. Shrub borders.

Rear Garden: Approx 25'. Patio. Side gated access. Rear gated access. Door to garage. Lawn. Shrub borders.

Garage: Up and over door.

Parking: Hard standing to rear for upto two cars.

Additional Information

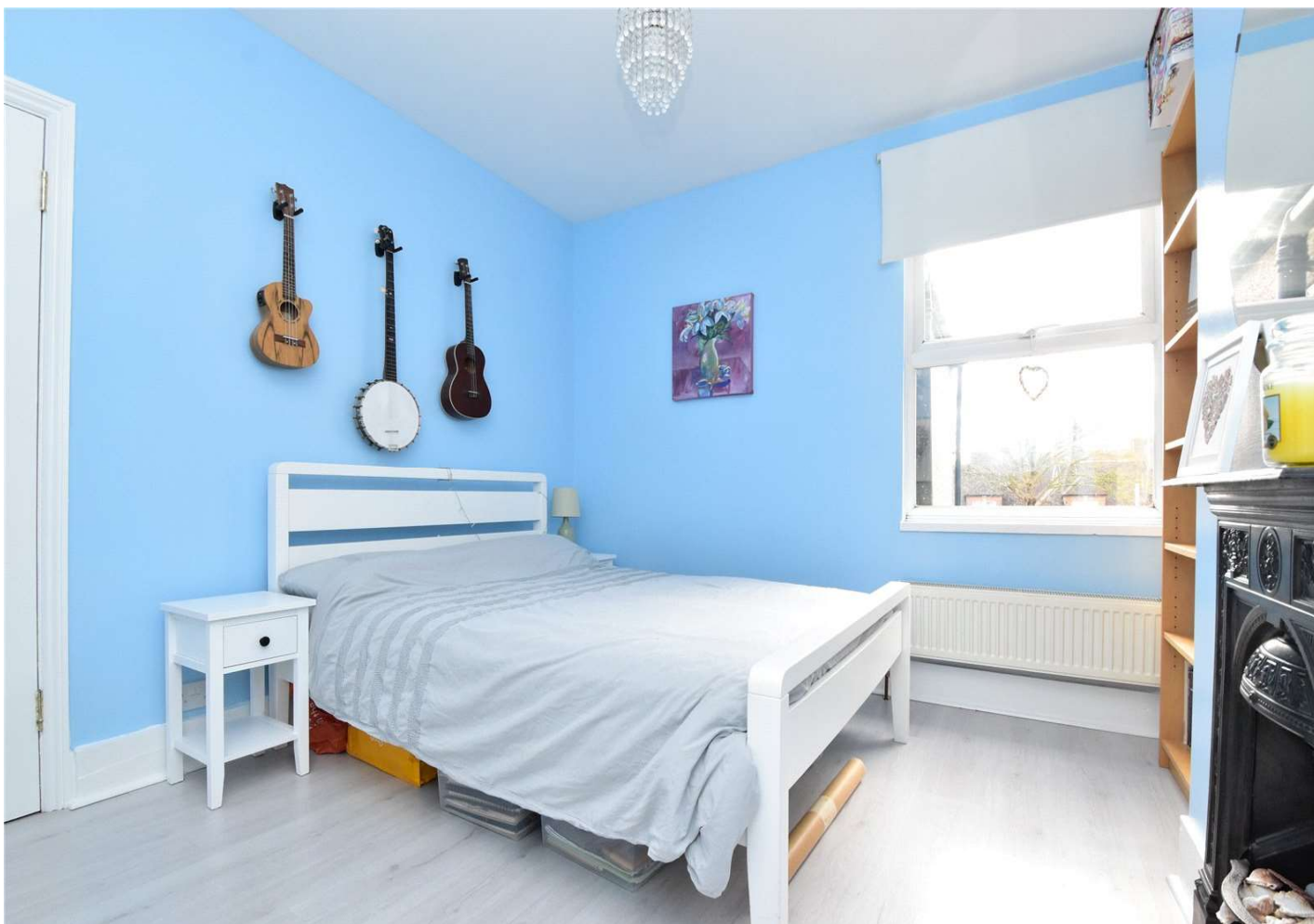
The boiler is located in the loft space above bedroom Three.

The property measure: 132 Sqm.

Council Tax - D

EPC Rating - D

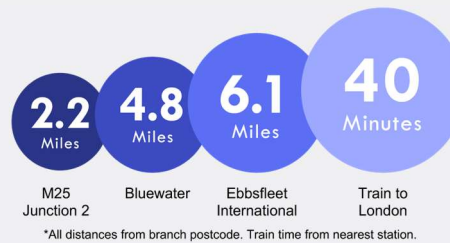




Important Notice

These particulars do not form part of an offer or contract and must not be relied upon as statements or representation of fact. Any areas, measurements, journey times or distances are approximate. The text, images, photographs and plans are for guidance only and are not necessarily comprehensive. It should not be assumed that the property has all necessary planning, building regulation or other consents and we have not tested any services, equipment or facilities. References to tenure are based on information supplied by the seller. Buyer should verify all information themselves by inspection or otherwise prior to a legal commitment to purchase. Photos and images are subject to copyright.

Location



(All distances & times are approximates)

FOR MORE INFORMATION CONTACT US TODAY.

Nick Menzies - Area Partner

01322 281281

Robinson Jackson
22 Market Street,
Dartford,
Kent DA1 1EZ

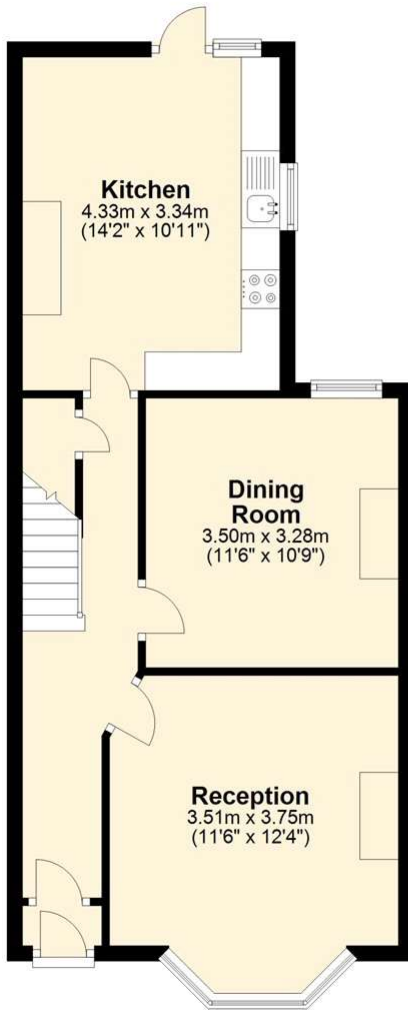
dartford@robinson-jackson.com

SALES | MORTGAGES | LEGALS

ROBINSON-JACKSON

Ground Floor

Approx. 49.8 sq. metres (536.5 sq. feet)



First Floor

Approx. 49.8 sq. metres (536.5 sq. feet)



Second Floor

Approx. 37.8 sq. metres (407.1 sq. feet)



Total area: approx. 137.5 sq. metres (1480.1 sq. feet)

